

LAFAYETTE RGNL/PAUL FOURNET FLD (LFT)(KLFT) P (AR) 2 SE UTC-6(-5DT)

HOUSTON
H-7D, L-21B, 22E, GOMC
IAP, AD

N30°12.30' W91°59.27'

42 B Class I, ARFF Index B NOTAM FILE LFT

RWY 04R-22L: H800X150 (ASPH-GRVD) S-140, D-170, 2S-175,
2D-290 PCN 67 F/C/X/T HIRL

RWY 04R: REIL. PAPI(P4L)—GA 3.0° TCH 50'. RVR-R Pole. Rgt tfc.

RWY 22L: MALSR. PAPI(P4L)—GA 3.0° TCH 50'. RVR-T Thld dspcd
342'. Trees.RWY 11-29: H5400X148 (ASPH-GRVD) S-85, D-110, 2S-140,
2D-175 PCN 5 F/D/X/T MIRL

RWY 11: REIL. PAPI(P4L)—GA 3.0° TCH 36'. Trees. Rgt tfc.

RWY 29: REIL. PAPI(P4L)—GA 3.0° TCH 51'. Thld dspcd 250'. Tree.

RWY 04L-22R: H4099X75 (ASPH) S-25, D-32 PCN 11 F/D/X/T MIRL

RWY 04L: REIL. PAPI(P2L)—GA 3.0° TCH 26'. Tree.

RWY 22R: REIL. PAPI(P2L)—GA 3.0° TCH 26'. Tree. Rgt tfc.

RUNWAY DECLARED DISTANCE INFORMATION

RWY 04L:TORA-4099 TODA-4099 ASDA-4099 LDA-4099

RWY 04R:TORA-8001 TODA-8001 ASDA-8001 LDA-8001

RWY 11:TORA-5401 TODA-5401 ASDA-5401 LDA-5401

RWY 22L:TORA-8001 TODA-8001 ASDA-8001 LDA-7659

RWY 22R:TORA-4099 TODA-4099 ASDA-4099 LDA-4099

RWY 29:TORA-5401 TODA-5401 ASDA-5401 LDA-5401

ARRESTING GEAR/SYSTEM

RWY 04R: EMAS

RWY 11: EMAS

RWY 22L: EMAS

RWY 29: EMAS

SERVICE: S4 FUEL 100LL, JET A, A+ OX 1, 4 LGT Dusk-Dawn. When ATCT clsd actvt MALSR Rwy 22L —CTAF; MIRL
Rwy 04L-22R not avbl. Rwy 11-29; Rwy 04L/22R and Rwy 04R/22L lgtd distance remainig signs.MILITARY— A-GEAR Rwy 22L EMAS 380.67' x 170'. Rwy 04R EMAS 223' x 170'. Rwy 29 EMAS 170' x 448'. FUEL
A+ (C337-288-3940.) (NC-100LL, A)AIRPORT REMARKS: Attended continuously. Migratory birds on and invof arpt. For A+ call 337-703-4800. PPR for
unscheduled acr opns with more than 30 psgr seats call amgr. 337-266-4400. Rwy 04L-22R not avbl for acr opns with
more than 30 psgr seats, rwy closed 0430-1130Z. Ctc ground control prior to push back from terminal. 155' oil rig 1
NM southeast of arpt. Use caution: twr blind spots on Twy M east and west of Twy E. Taxilane A and all prkg ramps are
non-movement areas. ATCT has ltd vis of north prkg ramp.

AIRPORT MANAGER: 337-703-4800

WEATHER DATA SOURCES: ASOS 134.05 (337) 262-2757.

COMMUNICATIONS: CTAF 118.5 ATIS 134.05 UNICOM 122.95

RCO 122.35 (DE RIDDER RADIO)

① APP/DEP CON 121.1 (020°-210°) 128.7 (211°-019°) (1130-0430Z‡)

① HOUSTON CENTER APP/DEP CON 126.35 (0430-1130Z‡)

TOWER 118.5 (1130-0430Z‡) GND CON 121.8 CLNC DEL 125.55

CLEARANCE DELIVERY PHONE: For CD if una to ctc on FSS freq, ctc Houston ARTCC at 281-230-5622.

AIRSPACE: CLASS C svc ctc APP CON svc 1130-0430Z‡; other times CLASS E.

RADIO AIDS TO NAVIGATION: NOTAM FILE LFT.

(L) (L) VORTACW 109.8 LFT Chan 35 N30°11.63' W91°59.55' at fld, 36/3E.

TACAN AZIMUTH unusable:

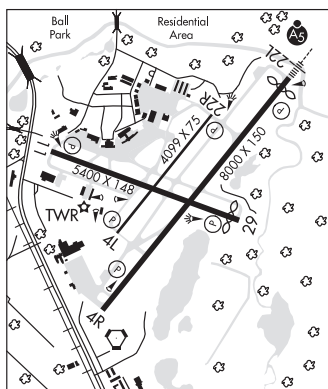
295°-320° blo 4,000'

LAFFS NDB (LOMW) 375 LF N30°17.36' W91°54.47' 216° 6.5 NM to fld. 21/3E.

ILS/DME 110.9 I-TYN Chan 46 Rwy 04R. Class IE.

ILS/DME 109.5 I-LFT Chan 32 Rwy 22L. Class IE. LOM LAFFS NDB. ILS and LOM unmonitored when ATCT clsd.

ASR (1130-0430Z‡)



LAFFS N30°17.36' W91°54.47' NOTAM FILE LFT.

NDB (LOMW) 375 LF 216° 6.5 NM to Lafayette Rgnl/Paul Fournet Fld. 21/3E.

HOUSTON
L-21B, 22E