

FOREST

G V MONTGOMERY (2M4) 1 S UTC-6(-5DT) N32°21.30' W89°29.29'

518 B NOTAM FILE GWO

RWY 17-35: H3602X75 (ASPH) S-25 MIRL

RWY 17: Trees.

RWY 35: Tree.

SERVICE: LGT MIRL Rwy 17-35 opr 2300-0400Z†, after 0400Z‡ ACTIVATE—CTAF.

AIRPORT REMARKS: Unattended. Pilots must provide their own tiedown ropes.

AIRPORT MANAGER: 601-469-2921

COMMUNICATIONS: CTAF/UNICOM 122.8

CLEARANCE DELIVERY PHONE: For CD ctc Memphis ARTCC at 901-368-8453/8449.

RADIO AIDS TO NAVIGATION: NOTAM FILE MEI.

MERIDIAN (H) VORTAC 117.0 MEI Chan 117 N32°22.71' W88°48.26' 263° 34.8 NM to fld. 578/5E.

VOR unusable:
043°-053°

MEMPHIS

L-18G

G V MONTGOMERY (See FOREST on page 137)

GEORGE M BRYAN (See STARKVILLE on page 162)

GOLDEN TRIANGLE RGNL (See COLUMBUS/W POINT/STARKVILLE on page 134)

GREENE CO N31°05.88' W88°29.17' NOTAM FILE GWO.

(H) (H) **VORTACW** 115.7 GCV Chan 104 030° 25.9 NM to Roy Wilcox. 300/5E.

VOR unusable:

138°-238° blo 5,000'

291°-339° blo 4,000'

NEW ORLEANS

H-6J, L-21C, 22G

GREENVILLE MID-DELTA (GLH)(KGLH) 5 NE UTC-6(-5DT) N33°28.97' W90°59.14'

131 B NOTAM FILE GLH

RWY 18L-36R: H8001X150 (ASPH-GRVD) S-75, D-112, 2S-142,

2D-182, 2D/2D2-540 PCN 61 F/D/X/T HIRL

RWY 18L: MALSR.

RWY 36R: REIL. PAPI(P4L)—GA 3.0° TCH 60'. Tree. Rgt tfc.

RWY 18R-36L: H7019X150 (ASPH-CONC-GRVD) S-29, D-47, 2D-78

PCN 11 R/C/X/T MIRL

RWY 18R: PAPI(P4L)—GA 3.0° TCH 52'. Rgt tfc.

RWY 36L: PAPI(P4L)—GA 3.0° TCH 52'. Trees.

RUNWAY DECLARED DISTANCE INFORMATION

RWY 18L:TORA-8001 TODA-8001 ASDA-7981 LDA-7981

RWY 36R:TORA-8001 TODA-8001 ASDA-8001 LDA-8001

SERVICE: S4 FUEL 100LL, JET A LGT When twr clsd ACTIVATE MALSR

Rwy 18L; HIRL Rwy 18L-36R preset med ints, to increase ints—CTAF.

PAPI Rwy 36R opr continuously.

AIRPORT REMARKS: Attended 1300-0100Z†. Sgfrnt bird act invof rwsy. Fuel avbl 1300-2300Z† dly, aft hrs call 662-822-5269. Rwy 18R-36L no tkof or Indg auth for ACR acft. Twy C, D and F not avbl for acf use. Rwy 18R-36L uneven pavement. Rwy 18R and Rwy 36L markings faded. Index A ARFF equip avbl upon req only. Clsd to sked acf ops with more than 9 pax seat and unsked acf ops with more than 30 pax seats.

AIRPORT MANAGER: 662-334-3121

WEATHER DATA SOURCES: ASOS 125.525 (662) 332-0863. LAWRS.

COMMUNICATIONS: CTAF 119.0 UNICOM 122.95

RCO 122.1R 114.25T (GREENWOOD RADIO)

MEMPHIS CENTER APP/DEP CON 135.875

TOWER 119.0 (1300-0100Z†) GND CON 121.8

CLEARANCE DELIVERY PHONE: For CD ctc Memphis ARTCC at 901-368-8453/8449.

AIRSPACE: CLASS D svc 1300-0100Z†; other times CLASS G.

RADIO AIDS TO NAVIGATION: NOTAM FILE GLH.

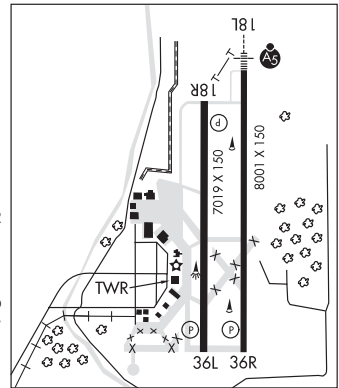
(VL) (DH) **VOR/DME** 114.25 GLH Chan 89(Y) N33°31.41' W90°58.98' 179° 2.4 NM to fld. 130/4E.

VOR unusable:

144°-157° byd 40 NM

METCALF NDB (MHW) 359 MTQ N33°25.52' W90°58.93' 358° 3.5 NM to fld. 120/1W.

ILS 109.1 I-GLH Rwy 18L. Class IE. Unmonitored when ATCT closed. LOC unusable byd 20° right of course.



MEMPHIS

H-6J, L-18F

IAP, AD