

**AMARILLO**

**BUFFALO** (1E7) 9 S UTC-6(-5DT) N35°03.83' W101°52.66'

DALLAS-FT WORTH

3640 B NOTAM FILE FTW

**RWY 02-20:** 6200X150 (TURF) LIRL(NSTD)

**RWY 02:** Fence.

**RWY 20:** Tree. Rgt tfc.

**RWY 08-26:** 1600X102 (TURF)

**RWY 08:** P-line.

**RWY 26:** Road.

**SERVICE:** LGT Dusk-0700Z±. Rwy 02-20 Nonstd LIRL; first 3000' north end of rwy lgtd. Thr lgts at north end only.

**AIRPORT REMARKS:** Attended irregularly. Radio controlled model acft act north end of arpt. Rwy 02-20 and Rwy 08-26 not mntnd, not mowed publ len and wid.

**AIRPORT MANAGER:** (806) 236-1109

**COMMUNICATIONS:** CTAF/UNICOM 122.8

**CLEARANCE DELIVERY PHONE:** For CD ctc Albuquerque ARTCC at 505-856-4861.

**PALO DURO** (1E4) 3 S UTC-6(-5DT) N35°08.62' W101°50.35'

DALLAS-FT WORTH

3639 NOTAM FILE FTW

**RWY 17-35:** 3700X50 (TURF-GRVL)

**RWY 17:** P-line.

**RWY 35:** Fence.

**AIRPORT REMARKS:** Unattended. Arpt fenced, gates locked, no aces. Rwy not suitable for acft. Arpt hazus for tsnts; rwy not mkd or defined; 63' transmission line acrs thr Rwy 17. Rwy 17-35 soft when wet on S end; loose grvl on rwy, vegetation on rwy.

**AIRPORT MANAGER:** 806-376-5853

**COMMUNICATIONS:** CTAF 122.9

**CLEARANCE DELIVERY PHONE:** For CD ctc Albuquerque ARTCC at 505-856-4861.

**RICK HUSBAND AMARILLO INTL** (AMA)(KAMA) 7 E UTC-6(-5DT) N35°13.16' W101°42.36'

DALLAS-FT WORTH

3607 B TPA—See Remarks LRA ARFF Index—See Remarks NOTAM FILE AMA

H-6G, L-15B

**RWY 04-22:** H13502X200 (CONC-GRVD) S-100, D-200, 2S-175,

IAP, AD

2D-400 PCN 176R/C/W/T HIRL(NSTD)

**RWY 04:** MALSR. PAPI(P4L)—GA 3.0° TCH 61'. RVR-T

**RWY 22:** MALSR. PAPI(P4L)—GA 3.0° TCH 77'. RVR-R

**RWY 13-31:** H7901X150 (CONC-GRVD) S-100, D-200, 2S-175,

2D-400 PCN 89 R/B/W/T HIRL

**RWY 13:** REIL. PAPI(P4L)—GA 3.0° TCH 52'.

**RWY 31:** REIL. PAPI(P4L)—GA 3.0° TCH 52'.

**RUNWAY DECLARED DISTANCE INFORMATION**

**RWY 04:** TORA-13502 TODA-13502 ASDA-13502 LDA-13502

**RWY 13:** TORA-7901 TODA-7901 ASDA-7901 LDA-7901

**RWY 22:** TORA-13502 TODA-13502 ASDA-13502 LDA-13502

**RWY 31:** TORA-7901 TODA-7901 ASDA-7901 LDA-7901

**SERVICE:** S4 FUEL 100LL, JET A1 + OX 2, 4 LGT When ATCT clsd, to incr intst and actvt MALSR rws 04 and 22; REIL rws 13 and 31; HIRL rws 04-22, 13-31; all twys—CTAF.

**AIRPORT REMARKS:** Attended continuously. Tiltrotor acft activity invof arpt. Class I, ARFF Index B. Index C equip avbl upon req. TPA for propeller acft 4502 (895), turbojet acft 5002 (1395), overhead 5502 (1895).

Rwy 04-22 center 130' grvd full length. RWY 04 RVR AVBL

1200-0600Z± CTC TWR. Rwy 04-22 NSTD HIRL due to spacing. HIRL 50 ft from rwy edge, NSTD dstc fm cntrln-pavement outside rwy edge stripes may not be full strength and depth perception problems may exist during periods of darkness. Flight Notification Service (ADCUS) available.

**AIRPORT MANAGER:** 806-335-1671

**WEATHER DATA SOURCES:** ASOS 118.85 (806) 335-1060.

**COMMUNICATIONS:** CTAF 118.3 ATIS 118.85 UNICOM 122.95

AMARILLO RCO 122.65 (FORT WORTH RADIO) (0600-1200Z±)

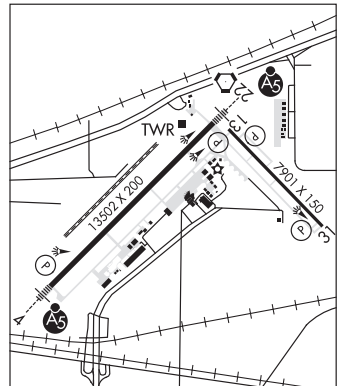
Ⓡ APP/DEP CON 119.5 (1200-0600Z±)

Ⓡ ALBUQUERQUE CENTER APP/DEP CON 127.85 (0600-1200Z±)

TOWER 118.3 (1200-0600Z±) GND CON 121.9 CLNC DEL 121.65

**CLEARANCE DELIVERY PHONE:** For CD if una to ctc on FSS freq, ctc Albuquerque ARTCC at 505-856-4561.

**AIRSPACE:** CLASS C svc ctc APP CON svc 1200-0600Z±; other times CLASS E.



CONTINUED ON NEXT PAGE

CONTINUED FROM PRECEDING PAGE

RADIO AIDS TO NAVIGATION: NOTAM FILE FTW.

PANHANDLE (H) (H) VORTACW 116.6 PNH Chan 113 N35°14.10' W101°41.94' at fld. 3595/8E.

PANDE NDB (LOMW) 251 AM N35°08.79' W101°48.33' 040° 6.6 NM to fld. 3609/8E. NOTAM FILE AMA.  
NDB unmonitored when ATCT clsd.

ILS 110.3 I-AMA Rwy 04. Class IB. LOM PANDE NDB. Unmonitored when ATCT clsd.

LDA/DME 111.1 I-RIQ Chan 48 Rwy 22.

ASR (1200-0600Z)

RIVER FALLS (H81) 9 SE UTC-6(-5DT) N35°04.89' W101°45.35'  
3585 B NOTAM FILE H81

DALLAS-FT WORTH  
H-6G, L-15B

RWY 17-35: H6015X60 (ASPH) MIRL

RWY 17: Thld dspclcd 151'. Road.

RWY 35: Rgt tfc.

RWY 04-22: 3200X70 (TURF)

RWY 04: Rgt tfc.

RWY 22: Bldg.

SERVICE: S2 FUEL 100LL, JET A1+ LGT ACTVT MIRL Rwy 17-35-CTAF. PCL click PTT slowly no more than once per second. Rwy 17 nonstd dspclcd thr lgts-incor colors.

AIRPORT REMARKS: Unattended. For fuel call 806-340-6790. Rwy 17 dspclcd thr not mkd. Dspclcd thr lgts 416 fm rwy end. 5599 ft avbl ngts. Rwy 35 markings faded.

AIRPORT MANAGER: (806) 670-5836

COMMUNICATIONS: CTAF/UNICOM 122.725

CLEARANCE DELIVERY PHONE: For CD ctc Albuquerque ARTCC at 505-856-4861.

RADIO AIDS TO NAVIGATION: NOTAM FILE FTW.

PANHANDLE (H) (H) VORTACW 116.6 PNH Chan 113 N35°14.10' W101°41.94' 189° 9.6 NM to fld. 3595/8E.

TRADEWIND (TDW)(KTDW) 3 SE UTC-6(-5DT) N35°10.19' W101°49.55'  
3649 B NOTAM FILE FTW

DALLAS-FT WORTH  
H-6G, L-15B  
IAP

RWY 17-35: H5098X60 (ASPH) S-16 MIRL

RWY 17: REIL. PVASI(P SIL)-GA 3.0° TCH 25'. Thld dspclcd 290'.

Fence. Rgt tfc.

RWY 35: REIL. Thld dspclcd 289'. Trees.

RWY 05-23: H3000X60 (ASPH) S-20 MIRL 0.5% up SW

RWY 05: Fence.

RWY 23: Pole. Rgt tfc.

SERVICE: S4 FUEL 100LL, JET A1+ OX3 LGT Actvt MIRL Rwys 05-23 and 17-35-CTAF.

AIRPORT REMARKS: Attended 1300-0400Z. Aft hrs svc 806-376-1008. Housing and school surrounds Rwy 23 end.

AIRPORT MANAGER: 806-376-1008

WEATHER DATA SOURCES: AWOS-AV 118.475 (806) 350-7407.

COMMUNICATIONS: CTAF/UNICOM 122.8

Ⓡ AMARILLO APP/DEP CON 119.5 (1200-0600Z)

Ⓡ ALBUQUERQUE CENTER APP/DEP CON 127.85 (0600-1200Z)

CLNC DEL 125.4

CLEARANCE DELIVERY PHONE: For CD ctc Albuquerque ARTCC at 505-856-4861.

RADIO AIDS TO NAVIGATION: NOTAM FILE FTW.

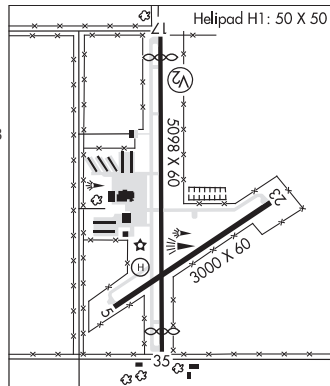
PANHANDLE (H) (H) VORTACW 116.6 PNH Chan 113 N35°14.10' W101°41.94' 230° 7.4 NM to fld. 3595/8E.

PANDE NDB (LOMW) 251 AM N35°08.79' W101°48.33' 317° 1.7 NM to fld. 3609/8E. NOTAM FILE AMA.

NDB unmonitored when ATCT clsd.

• • • • •

HELIPAD H1: H50X50 (ASPH)



AMASON N31°49.97' W94°09.23' NOTAM FILE CXO.  
NDB (MHW) 341 CZJ at Center Muni. 329/4E.

HOUSTON  
L-19E

AMBASSADOR N32°35.13' W95°06.79' NOTAM FILE FTW.  
NDB (MHW) 404 ABG 424/7E. (VFR only).

DALLAS-FT. WORTH