

GAINESVILLE MUNI (GLE)(KGLG) 3 W UTC-6(-5DT) N33°39.13' W97°11.84'

DALLAS-FT WORTH

846 B NOTAM FILE GLE

H-6H, L-17C, A

RWY 18-36: H6000X100 (ASPH) S-30, D-50 MIRL 0.9% up N

IAP, AD

RWY 18: REIL. PAPI(P2R)—GA 3.0° TCH 45'. P-line.

RWY 36: REIL. PAPI(P2L)—GA 3.0° TCH 45'.

RWY 13-31: H4307X75 (ASPH) S-15 0.8% up NW

RWY 13: Trees.

SERVICE: S4 **FUEL** 100LL, JET A **LGT** Dusk-Dawn. MIRL Rwy 18-36 preset low ints; to incr ints **ACTIVATE**—CTAF. PAPI Rwy 18 and Rwy 36 opr continuously.

AIRPORT REMARKS: Attended 1400-2300Z±. 100LL fuel avbl 24 hrs with credit card, for Jet A fuel after hrs call 940-668-4565. Rwy 13 has aim points. Rwy 31 has aim points. Rwy 13-31 markings faded.

AIRPORT MANAGER: 940-668-4565

WEATHER DATA SOURCES: AWOS-3 118.375 (940) 612-3549.

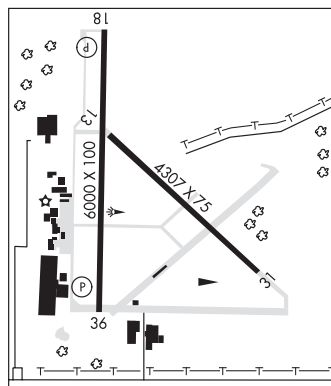
COMMUNICATIONS: CTAF/UNICOM 123.0

Ⓡ **FORT WORTH CENTER APP/DEP CON** 124.75

CLEARANCE DELIVERY PHONE: For CD ctc Fort Worth ARTCC at 817-858-7584.

RADIO AIDS TO NAVIGATION: NOTAM FILE FTW.

BOWIE (H) (H) VORTACW 117.15 UKW Chan 118(Y) N33°32.15' W97°49.28' 071° 32.0 NM to fld. 1102/6E.



GALVESTON

SCHOLES INTL AT GALVESTON (GLS)(KGLS) 3 SW UTC-6(-5DT) N29°15.92'

HOUSTON

W94°51.63'

6 B LRA NOTAM FILE GLS

COPTER

H-7C, L-19E, 21A, GOMW

RWY 18-36: H6001X150 (CONC) S-30, D-45, 2D-90 MIRL

IAP, AD

RWY 18: REIL. PAPI(P4L)—GA 3.0° TCH 44'.

RWY 36: REIL. PAPI(P4L)—GA 3.0° TCH 45'. Bldg.

RWY 14-32: H6000X150 (ASPH-CONC) S-30, D-45, 2D-90 HIRL

RWY 14: MALSR. PAPI(P4L)—GA 3.0° TCH 52'.

RWY 32: REIL. PAPI(P4L)—GA 3.0° TCH 46'. Bldg.

RUNWAY DECLARED DISTANCE INFORMATION

RWY 14: TORA-6000 TODA-6000 ASDA-6000 LDA-6000

RWY 18: TORA-6001 TODA-6001 ASDA-6001 LDA-6001

RWY 32: TORA-6000 TODA-6000 ASDA-6000 LDA-6000

RWY 36: TORA-6001 TODA-6001 ASDA-6001 LDA-6001

SERVICE: S6 **FUEL** 100LL, JET A **LGT** HIRL Rwy 14-32, MIRL Rwy 18-36 preset med instst. When ATCT clsd **ACTVT** MALSR Rwy 14—CTAF.

AIRPORT REMARKS: Attended 1200-0200Z±. For fuel svc aft hrs call 409-750-0195. Flocks of birds invof arpt blw 200 ft AGL. Hcls oprg on and invof arpt. 178 ft lgtd bldg 2000 ft NE of Rwy 18 thr. 124' lgtd crane NW side of arpt. Two 157 ft MSL lgtd towers btn Rwsys 32 and 36. PAEW adj rwsys and twys. Rwy 14-32 first 1,300' NW end is conc. Flight Notification Service (ADCUS) available.

AIRPORT MANAGER: (409) 797-3590

WEATHER DATA SOURCES: ASOS 123.950 (409) 740-5483.

COMMUNICATIONS: CTAF 120.575 UNICOM 123.05

GALVESTON RCO 122.2 (MONTGOMERY COUNTY RADIO)

Ⓡ **HOUSTON APP/DEP CON** 134.45

TOWER 120.575 (1200-0000Z±) **GND CON** 118.625 **CLNC DEL** 135.35

CLEARANCE DELIVERY PHONE: For CD when ATCT is clsd ctc Houston Apch at 281-443-5844 to cnl IFR at 281-443-5888.

AIRSPACE: CLASS D svc 1200-0000Z±; other times CLASS E.

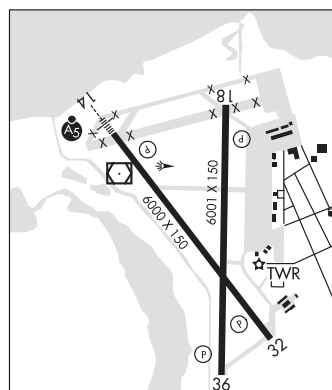
RADIO AIDS TO NAVIGATION: NOTAM FILE GLS.

(H) (H) VORW/DME 113.0 VUH Chan 77 N29°16.16' W94°52.06' at fld. 4/6E.

VOR portion unusable:

285°-295° byd 35 NM blo 2,500'

ILS 111.7 I-GLS Rwy 14.



GALVESTON 209B GWW N29°07.82' W94°32.79' /121

AWOS-3 118.25 (832) 917-1465

HOUSTON, HOUSTON TAC

L-19E, L-21A, GOMW