

PALM COAST

FLAGLER EXEC (FIN)(KFIN) 6 S UTC-5(-4DT) N29°27.91' W81°12.46'

JACKSONVILLE
H-8H, L-21D, 24G
IAP, AD

33 B NOTAM FILE FIN

RWY 11-29: H5500X100 (ASPH-GRVD) S-60 PCN 27 F/A/X/T MIRL

RWY 11: REIL. PAPI(P4L)—GA 3.0° TCH 40'. Trees.

RWY 29: REIL. PAPI(P4L)—GA 3.0° TCH 40'. Tree.

RWY 06-24: H5001X100 (ASPH-GRVD) S-60 PCN 19 F/B/Y/T MIRL

RWY 06: REIL. PAPI(P4L)—GA 3.0° TCH 41'. Trees.

RWY 24: REIL. PAPI(P4L)—GA 3.0° TCH 40'. Trees.

SERVICE: S4 **FUEL** 100LL, **JET A** **LGT** When ATCT clsd, actvt REIL 6, 11, 24 and 29; PAPI Rwy 06, 24, Rwy 11 and 29; MIRL Rwy 06-24 and 11-29—CTAF.

NOISE: Noise sens area NW quadrant; noise abatement proc in effect – amgr. Full stop lndg only; use arpt taxi pat.

AIRPORT REMARKS: Attended Mon-Sat 1200-2300Z, Sun 1300-2000Z. 24 hr PPR for seaplane lake fuel svc—amgr. Aft hr Jet A fuel avbl 24 hr PPR—amgr. Twy B btn Twy A1 and Twy D clsd to fixed wing acft. Full stop lndg only; use arpt taxi pat. Hel ops conducted w/ arpt bndry 500 ft or blw unless drctd by ATC; hel ops Rwys 06 and 29 left tfc; hel ops Rwy 11 and 24 righ tfc. Rwy 06 unlgtd obstns in apch; 1060 ft trees bfr AER. Rwy 24 unlgtd obstns in apch; 1080 ft trees bfr AER.

AIRPORT MANAGER: (386) 313-4220

WEATHER DATA SOURCES: AWOS-3 128.325 (386) 437-7334.

COMMUNICATIONS: CTAF 118.95 ATIS 128.325 UNICOM 123.0

Ⓡ DAYTONA APP/DEP CON 125.8

TOWER 118.95 (1100-0100Z) GND CON 121.75 CLNC DEL 121.75

CLEARANCE DELIVERY PHONE: For CD or to cnl IFR when ATCT is clsd ctc dab Apch at 386-226-3939.

AIRSPACE: CLASS D svc 1100-0100Z; other times CLASS G.

RADIO AIDS TO NAVIGATION: NOTAM FILE OMN.

ORMOND BEACH (H) (H) VORTAC 112.6 OMN Chan 73 N29°18.20' W81°06.76' 333° 10.9 NM to fld. 24/0E.

VOR unusable:

070°-100° byd 35NM blo 1,500'

240°-244° blo 6,000'

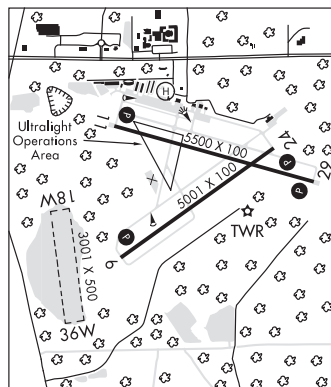
290°-300° byd 20 NM blo 2,500'

WATERWAY 18W-36W: 3001X500 (WATER)

SEAPLANE REMARKS: For seaplane refueling at lake call 386-437-0401, 24 hrs in advance. Rwy 18W-36W seaplane lndg area Gore Lake 3196 ft by 1633 ft unmrkd 40 ft trees water edge all quadrants; all apchs hdg 180° or 360° past trees.

HELIPAD H1: H36X36 (CONC-GRVL)

HELIPORT REMARKS: Helipad H1 na exc Flagler County emerg svcs.



PALMETTO

MANATEE (48X) 7 NE UTC-5(-4DT) N27°38.56' W82°31.20'

MIAMI

27 NOTAM FILE PIE

RWY 07-25: 3120X100 (TURF) LIRL

RWY 07: Trees. Rgt tfc.

RWY 25: Brush.

SERVICE: S2 **FUEL** 100LL **LGT** LIRL Rwy 07-25 avbl by phone req 941-722-9296.

AIRPORT REMARKS: Attended Mon-Fri 1400-2200Z, Sat 1400-1700Z. Fuel avbl daily SR-SS. Call arpt mgr for after hrs svc and check rwy cond 941-722-9296. Arpt clsd to turbine hops inclg hover and practice maneuvers at NE field adj to Rwy 07-25 exc Bell Jet Rangers, emerg. Call in advn 941-722-9296. Rwy 07-25 sprinklers active Mon-Thu 0100-1000Z. Birds, wildlife and deer on and invof arpt. Rwy 07-25 first 500 ft east end soft after heavy seasonal rains. Rwy 07-25 thlds marked by three green lgt and one bucket on each side of rwy.

AIRPORT MANAGER: 941-722-9296

COMMUNICATIONS: CTAF 122.9

CLEARANCE DELIVERY PHONE: For CD ctc Tampa Apch at 813-878-2528