

GREEN SEA (S79) 4 NW UTC-5(-4DT) N34°11.13' W79°01.24'
 95 NOTAM FILE AND
RWY 09-27: 3600X100 (TURF)
RWY 09: Tree.
RWY 27: Tree.

CHARLOTTE

AIRPORT REMARKS: Unattended. Parachute Jumping. Remote ctl acft invof arpt. Rwy 09 rwy edge marked with white cones.

AIRPORT MANAGER: 843-230-0362

COMMUNICATIONS: CTAF 122.9

CLEARANCE DELIVERY PHONE: For CD ctc Myrtle Beach Apch at 843-477-2727 or 843-477-2704, when Apch clsd ctc Jacksonville ARTCC at 904-845-1592.

GREENVILLE

DONALDSON FLD (GYH)(KGYH) 6 S UTC-5(-4DT) N34°45.50' W82°22.59'

956 B TPA—2756(1800) Class IV, ARFF Index A, NOTAM FILE GYH

RWY 05-23: H8000X150 (CONC-GRVD) S-94, D-121, 2D-199

PCN 36 R/C/W/T HIRL

RWY 05: MALSR. PAPI(P4L)—GA 3.22° TCH 56'. Rgt tfc. 0.3% down.

RWY 23: PAPI(P4L)—GA 4.14° TCH 95'. Trees. 0.6% up.

ARRESTING GEAR/SYSTEM

RWY 05 BAK-14 (1502 FT). BAK-14 (1703 FT). **RWY 23**

SERVICE: S4 FUEL 100LL, JET A OX1 LGT ACTVT MALSR Rwy 05; HIRL Rwy 05-23—CTAF.

AIRPORT REMARKS: Attended 1100-0000Z†. Sfc conds not rptd daily 0200-1200Z†. CLOSED to air carrier opr with more than 30 pax seats exc 24 hr PPR call arpt mgr 864-277-3152. Twy A clsd to wingspans greater than 79' without prior coordination with arpt manager. Limited parking, ramp clsd to all traffic exc mil R/W acft with 24 hr PPR. Ctc ARNG ops C803-299-5214. Opr 1230-2200Z† Mon-Fri, exc hol. Limited tran maint for CH47 and UH72 acft only.

AIRPORT MANAGER: 864-277-3152

WEATHER DATA SOURCES: AWOS-3 127.325 (864) 277-5674. AWOS avbl only when ATCT clsd.

COMMUNICATIONS: CTAF 133.325 UNICOM 122.7

® GREER APP/DEP CON 118.8 (1100-0445Z†)

ATLANTA CENTER APP/DEP CON 135.35 (0445-1100Z†)

TOWER 133.325 (1200-0200Z†) GND CON 121.4 CLNC DEL 121.4

AIRSPACE: CLASS D svc 1200-0200Z†; other times CLASS G.

RADIO AIDS TO NAVIGATION: NOTAM FILE SPA.

SPARTANBURG (H) (H) VORTAC 115.7 SPA Chan 104 N35°02.02' W81°55.62' 235° 27.6 NM to fld. 935/2W.

VOR unusable:

270°-359° byd 7 NM blo 3,000'

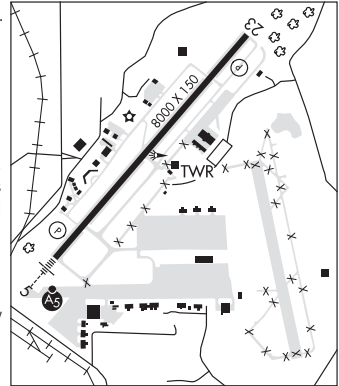
Byd 28 NM blo 7,000'

Byd 9 NM blo 6,000'

DYANA NDB (MHW/LOM) 338 GY N34°41.47' W82°26.62' 044° 5.2 NM to fld. 850/4W. NOTAM FILE AND.

NDB unmt 0200-1200Z†

ILS/DME 108.3 I-GYH Chan 20 Rwy 05. Class IA. LOM DYANA NDB. ILS unmonitored 0200-1200Z†.



ATLANTA

H-9B, 12G, L-24I, 25C
IAP, AD