

**MYRTLE BEACH INTL** (MYR)(KMYR) 3 SW UTC-5(-4DT) N33°40.78' W78°55.70'

CHARLOTTE

25 B Class I, ARFF Index C NOTAM FILE MYR

H-9C, 12G, L-241, 35B

**RWY 18-36:** H9503X150 (ASPH-GRVD) S-120, D-233, 2D-424,

2D/2D2-943 PCN 69 R/B/W/T HIRL

**RWY 18:** MALRS. PAPI(P4L)—GA 3.0° TCH 64'. RVR-TR P-line. Rgt tfc.

**RWY 36:** MALSF. PAPI(P4L)—GA 3.0° TCH 71'. RVR-TR Trees.

**SERVICE:** S4 FUEL 100LL, JET A LGT When twr clsd ACTIVATE MALSR Rwy 18, MALSF Rwy 36; HIRL Rwy 18-36—CTAF.

**AIRPORT REMARKS:** Attended 1100-0200Z†. Gulls on and invof arpt. No aprv rqrtd for pushback at trml gates; push is at pilot's discretion; rmn clr of twys. Sightseeing helicopters operating in close proximity of arpt and rwy at or blo 1200. Helicopter routes and holding points remain clear of rwy cntrlns. Helicopters departing/arriving pad located 700' south/southeast apch end Rwy 36. Twy B4 clsd to acct more than 12,500 lbs. U.S. cstms user fee arpt. U.S. Cstms svc avbl Mon-Fri 1300-2200Z†, other times PPR and fee charged. Ctc MYR ops on CTAF 128.45 prior to ldg 0400-1100Z†.

**AIRPORT MANAGER:** 843-448-1580

**WEATHER DATA SOURCES:** AWOS-3PT 123.925 (843) 238-0335. LAWRS.

**COMMUNICATIONS:** CTAF 128.45 ATIS 123.925 UNICOM 122.95

® APP/DEP CON 119.2 (322°-170°) 127.4 (171°-321°) (1100-0400Z†)

JAX CENTER APP/DEP CON 134.375 (0400-1100Z†)

TOWER 128.45 (1100-0400Z†) GND CON/CLNC DEL 120.3

**AIRSPACE:** CLASS C svc ctc APP CON svc 1100-0400Z† other times CLASS G.

**RADIO AIDS TO NAVIGATION:** NOTAM FILE CRE.

GRAND STRAND (H) (H) VORTAC 114.4 CRE Chan 91 N33°48.83' W78°43.47' 235° 13.0 NM to fld. 27/3W.

TACAN AZIMUTH unusable:

296°-335°

DME unusable:

296°-335°

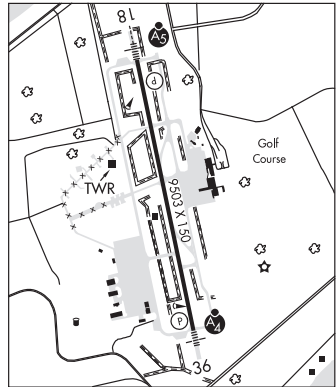
VOR unusable:

296°-308° byd 30NM blo 5,000'

ILS/DME 109.5 I-MYR Chan 32 Rwy 18. Class IIE.

ILS 111.9 I-BSQ Rwy 36. Class IE.

**COMM/NAV/WEATHER REMARKS:** ATIS freq 123.925 used to transmit AWOS wx data when twr closes.



**NEWBERRY CO** (EOE)(KEOE) 3 N UTC-5(-4DT) N34°18.56' W81°38.44'

CHARLOTTE

570 B NOTAM FILE AND

L-24J

**RWY 04-22:** H4001X75 (ASPH-AFSC) S-23, D-30 MIRL

0.9% up NE

**RWY 04:** PAPI(P2L)—GA 3.15° TCH 42'. Trees.

**RWY 22:** PAPI(P2L)—GA 3.15° TCH 43'. Tree. Rgt tfc.

**SERVICE:** S4 FUEL 100LL LGT ACTIVATE PAPI Rwy 04 and Rwy 22 and MIRL Rwy 04-22—CTAF.

**AIRPORT REMARKS:** Unattended. Fuel self-serve. Deer on invof arpt.

**AIRPORT MANAGER:** (803) 944-4298

**WEATHER DATA SOURCES:** AWOS-3 124.275 (803) 276-2419.

**COMMUNICATIONS:** CTAF/UNICOM 122.8

COLUMBIA APP/DEP CON 133.4

**CLEARANCE DELIVERY PHONE:** For CD ctc Columbia Apch at 803-822-4511.

**RADIO AIDS TO NAVIGATION:** NOTAM FILE GRD.

GREENWOOD (H) (H) VORTACW 115.5 GRD Chan 102 N34°15.09'

W82°09.25' 083° 25.8 NM to fld. 630/1W.

ENOREE NDB (MHW) 278 EOE N34°18.66' W81°38.18' at fld.

562/7W. NOTAM FILE AND. NDB unmonitored.

