

**NAPA CO** (APC)(KAPC) 5 S UTC-8(-7DT) N38°12.79' W122°16.84'

**SAN FRANCISCO**  
H-3B, L-2F, 3A, A  
IAP, AD

36 B NOTAM FILE APC MON Airport  
RWY 01L-19R: H5930X150 (ASPH-GRVD) S-102, D-134, 2D-120

PCN 41 F/D/X/T MIRL 0.3% up N

RWY 01L: MALS.

RWY 19R: PAPI(P4L)—GA 3.25° TCH 52'. Rgt tfc.

RWY 06-24: H5008X150 (CONC) S-60, D-76, 2D-120

PCN 21 R/C/W/T MIRL 0.4% up NE

RWY 06: REIL.

RWY 01R-19L: H2510X75 (ASPH) S-13.5 PCN 5 F/D/X/T 0.4% up N

RWY 01R: Rgt tfc.

**LAND AND HOLD—SHORT OPERATIONS**

LDG RWY	HOLD—SHORT POINT	AVBL LDG DIST
RWY 24	01L-19R	3700

SERVICE: S4 FUEL 100LL, JET A OX 3, 4 LGT When twr clsd ACTIVATE MALS Rwy 01L; REIL Rwy 06, MIRL Rwy 01L-19R and Rwy 06-24—CTAF. PAPI Rwy 19R opr continuously.

**AIRPORT REMARKS:** Attended 1500-0400Z‡. For fuel svc 0500-1400Z‡ call 707-224-0887. Unlgt bridge 1 NM S, 167' AGL. Asph apron strength 12,500-30,000 lbs gross weight single wheel. Due to arpt proximity to wetlands birds on and invof the arpt year around with highest concentration of activity of birds on the rwys during rainy weather.

Landing fee. Ldg fee chrgd to all air taxi, coml actv ops (exc flt instruction), and trans actv weighing more than 12500 lbs.

**AIRPORT MANAGER:** 707-253-4300

**WEATHER DATA SOURCES:** ASOS (707) 252-7916

**COMMUNICATIONS:** CTAF 118.7 ATIS 124.05 707-255-2847 UNICOM 122.95

Ⓡ OAKLAND CENTER APP/DEP CON 127.8 353.5

TOWER 118.7 (1500-0400Z‡) GND CON 121.7 CLNC DEL 127.85

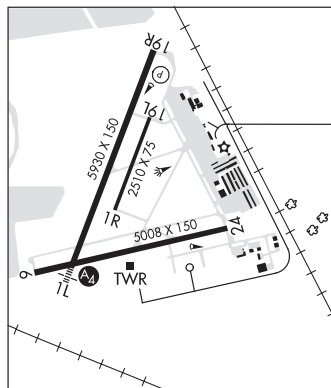
**CLEARANCE DELIVERY PHONE:** For CD when ATCT clsd ctc Oakland ARTCC at 510-745-3380.

**AIRSPACE:** CLASS D svc 1500-0400Z‡; other times CLASS G.

**RADIO AIDS TO NAVIGATION:** NOTAM FILE APC.

SCAGGS ISLAND (L) (L) VORTACW 112.1 SGD Chan 58 N38°10.76' W122°22.39' 048° 4.8 NM to fld. 5/17E.

ILS/DME 111.3 I-APC Chan 50 Rwy 01L. Class IE. LOC unmonitored when ATCT clsd. Glideslope unusable byd 4° left and 7° right of course. Autopilot coupled apchs not applicable blw 530' MSL (1.3 NM from thld).



**NAVAL BASE VENTURA CO** (See POINT MUGU NAS (NAVAL BASE VENTURA CO) on page 203)

**NEEDLES** (EED)(KEED) 5 S UTC-8(-7DT) N34°45.98' W114°37.40'

**PHOENIX**  
H-4J, L-7E  
IAP

983 B NOTAM FILE EED MON Airport

RWY 11-29: H5005X100 (ASPH) S-16, D-32 MIRL 1.3% up NW

RWY 11: REIL. PAPI(P2L)—GA 3.0° TCH 40'.

RWY 29: REIL. PAPI(P2L)—GA 3.0° TCH 40'.

RWY 02-20: H4235X100 (ASPH) S-16, D-32 MIRL 2.0% up SW

RWY 02: PAPI(P2L)—GA 3.0° TCH 30'.

RWY 20: PAPI(P2L)—GA 3.0° TCH 40'.

SERVICE: S2 FUEL 100LL, JET A LGT ACTIVATE MIRL Rwy 11-29 and Rwy 02-20, REIL Rwy 11 and Rwy 29—CTAF. PAPI Rwy 11, Rwy 29, Rwy 02 and Rwy 20 opr continuously.

**AIRPORT REMARKS:** Unattended. Jet A fuel avbl 24 hrs self svc. 100LL fuel avbl 24 hrs self sv. Rwy 11-29 cracks in pavement. Rwy 29 NSTD markings for instr apch; bsc instead of NPI markings.

**AIRPORT MANAGER:** 909-387-8810

**WEATHER DATA SOURCES:** ASOS 128.325 (760) 326-4281.

**COMMUNICATIONS:** CTAF/UNICOM 123.0

RCO 122.1R 115.2T (PRESCOTT RADIO)

RCO 122.2 (RIVERSIDE RADIO)

Ⓡ L.A. CENTER APP/DEP CON 134.65

**CLEARANCE DELIVERY PHONE:** For CD if una to ctc on FSS freq, ctc Los Angeles ARTCC at 661-575-2079.

**AIRSPACE:** CLASS E svc 1600-0000Z‡; other times CLASS G.

**RADIO AIDS TO NAVIGATION:** NOTAM FILE EED.

(H) (H) VORTAC 115.2 EED Chan 99 N34°45.96' W114°28.45' 255° 7.4 NM to fld. 620/15E.

VORTAC unusable:

100°-130° byd 27 NM blo 6,600'

170°-220° byd 20 NM blo 5,800'

220°-280° byd 35 NM blo 6,800'

TACAN AZIMUTH & DME unusable:

165°-220° byd 20 NM blo 8,000'

165°-220° byd 30 NM blo 12,000'