

DELTA

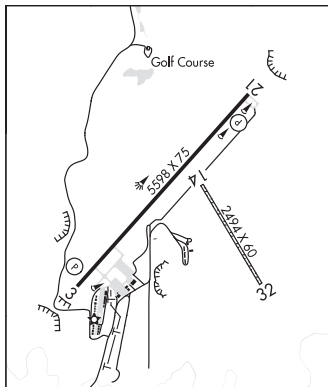
**BLAKE FLD** (AJZ)(KAJZ) 3 N UTC-7(-6DT) N38°47.14' W108°03.72'  
 5193 B TPA-6200(1007) NOTAM FILE DEN  
**RWY 03-21:** H5598X75 (ASPH) S-30, D-30 MIRL 1.5% up NE  
**RWY 03:** REIL. PAPI(P2L)—GA 3.0° TCH 40'. Rgt tfc.  
**RWY 21:** REIL. PAPI(P2L)—GA 3.0° TCH 37'.  
**RWY 14-32:** 2494X60 (DIRT) 1.4 % up NW  
**SERVICE:** S3 FUEL 100LL, JET A OX3 LGT ACTVT REIL Rwy 03  
 and Rwy 21; MIRL Rwy 03-21—CTAF. PAPI Rwy 03 and 21 on  
 consly.

DENVER  
H-3E, L-9E  
IAP

**AIRPORT REMARKS:** Attended Mon-Fri 1500-0000Z±. 24 hr self serve  
 fuel avbl. After hrs emerg fone, Sheriff Dept 970-874-2000/aft  
 hrs svc 970-209-0883. Plines 2640' NW Rwy 03-21, +52'  
 AGL. Rwy 21 has turn around taxi has blue/white reflectors. Rwy  
 03 has +4' fence 580' from thld OB. Antelope on and invof arpt.  
 Rwy 03-21 has 4' bushes 15-20' from rwy edge on both sides  
 in various places. Rwy 03-21 slopes up to the NE.

**AIRPORT MANAGER:** 970-874-5181  
**WEATHER DATA SOURCES:** AWOS-3 134.0 (970) 874-3251.  
**COMMUNICATIONS:** CTAF/UNICOM 122.8  
**CLEARANCE DELIVERY PHONE:** For CD ctc Denver ARTCC at  
 303-651-4257.

**RADIO AIDS TO NAVIGATION:** NOTAM FILE DEN.  
**GRAND JUNCTION (H) (H) VORW/DME** 112.4 JNC Chan 71  
 N39°03.57' W108°47.55' 100° 37.9 NM to fld. 7100/15E.



**WESTWINDS** (D17) 4 W UTC-7(-6DT) N38°45.51' W108°08.91'  
 5000 NOTAM FILE DEN  
**RWY 04-22:** H4100X40 (ASPH)  
**RWY 22:** Trees.  
**RWY 13-31:** 2000X70 (GRVL-DIRT)  
**RWY 13:** Hill.  
**RWY 31:** Road.

DENVER  
L-9E

**AIRPORT REMARKS:** Attended 1500-0000Z±. Rwy 04-22 CLOSED to acct 8,500 lbs or more. +100' to 300' mountains lctd  
 north, west and east of arpt at varying distances. Rwy 22 has 180' mountain 1500' from rwy end, apch slope 7:1. Rwy  
 13-31 soft when wet. Rwy 31 has +10' trees 150' from thld OB. +40' tree 60' from thld 50' rgt of cntrln. Rwy 04  
 has +120' terrain 2700' from thld 380' left of cntrln.

**AIRPORT MANAGER:** 303-829-1696  
**COMMUNICATIONS:** CTAF/UNICOM 122.8  
**CLEARANCE DELIVERY PHONE:** For CD ctc Denver ARTCC at 303-651-4257.

**RADIO AIDS TO NAVIGATION:** NOTAM FILE MTJ.  
**MONTROSE (H) (H) VORW/DME** 117.1 MTJ Chan 118 N38°30.39' W107°53.96' 310° 19.1 NM to fld.  
 5713/12E. VDME unmonitored.  
**DME unusable:**  
 011°-090° byd 26NM blo 15,000'  
 190°-250° byd 25 NM blo 15,000'  
**VOR unusable:**  
 060°-090° byd 26NM blo 16,000'  
 190°-250° byd 25 NM blo 15,000'