

## ALBUQUERQUE

**ALBUQUERQUE INTL SUNPORT** (ABQ)(KABQ) P (AF ANG DOE USFS) 3 SE UTC-7(-6DT)  
 N35°02.34' W106°36.50'

**ALBUQUERQUE**  
 H-4L, L-8I  
 IAP, AD

5355 B LRA ARFF Index—See Remarks NOTAM FILE ABQ MON Airport

**RWY 08-26:** H13793X150 (CONC-GRVD) S-100, D-210, 2S-175,  
 2D-360, 2D/2D2-720 PCN 71 R/B/W/T HIRL CL

**RWY 08:** MALSR. TDZL. VASI(V6L)—GA 2.95° TCH 55'. RVR-T Thld  
 dspldc 1000'. Rgt tfc.

**RWY 26:** REIL. PAPI(P4L)—GA 3.0° TCH 83'. RVR-R 0.5% down.

**RWY 03-21:** H10000X150 (CONC-GRVD) S-100, D-210, 2S-175,  
 2D-360, 2D/2D2-720 PCN 78 R/B/W/T HIRL CL

**RWY 03:** MALSR. TDZL. PAPI(P4L)—GA 3.0° TCH 59'. RVR-TR Rgt tfc.

**RWY 21:** REIL. PAPI(P4L)—GA 3.0° TCH 74'. RVR-TR

**RWY 12-30:** H6000X150 (CONC-GRVD) S-65, D-120, 2S-155,  
 2D-155 PCN 41 R/C/W/T MIRL

**RWY 12:** RVR-R Rgt tfc.

**RWY 30:** REIL. PAPI(P4L)—GA 3.0° TCH 46'. RVR-T

**RUNWAY DECLARED DISTANCE INFORMATION**

**RWY 03:** TORA-10000 TODA-10000 ASDA-10000 LDA-10000

**RWY 08:** TORA-13793 TODA-13793 ASDA-13793 LDA-12793

**RWY 12:** TORA-6000 TODA-6000 ASDA-6000 LDA-6000

**RWY 21:** TORA-10000 TODA-10000 ASDA-10000 LDA-10000

**RWY 26:** TORA-13793 TODA-13793 ASDA-13793 LDA-13793

**RWY 30:** TORA-6000 TODA-6000 ASDA-6000 LDA-6000

**SERVICE:** S4 **FUEL** 100LL, JET A, A1, A1+ **OX** 1, 2, 3, 4 **LGT** PAPI Rwy 26 does not provide obstacle clearance beyond 3.5 NM from thld, unusable beyond 3.5 NM.

**AIRPORT REMARKS:** Attended continuously. Bird haz Oct-Dec, and Mar-May. Heavy student helicopter tfc, ctl firing area south of arpt. Dep on Rwy 03 are rsrtd and rqr prior coord with tower. Rwy 08-26, Rwy 03-21 and Rwy 12-30 grvd 130 ft wide. Twy E5 Clsd. Rwy 08 and 12 apch ends are de-coupled. Common hold short line is shared. Rwy 12 for takeoff is only avbl via Txy E. Full length avbl via back taxi. Rwy 30 landings, last avbl exit is Txy E, exit via E1 is not possible. Ramp north of Rwy 08-26 clsd to helicopters GA acft. Class I, ARFF Index C. Fighter acft depart south only. Air carrier gnd handling not avbl btn the hrs of 0800-1130Z†. Twy D north of Twy B clsd indef. Twy H mil use only. ARFF provided by USAF. Mil wx svc avbl 1100-2300Z† Mon, Tue-Fri 1300-2300Z†. Clsd wknds and hol/mil down days. Msn wx support briefings for aircrew avbl via the 25 OWS/Davis-Monthan AFB dur mil wx flt clsd hr, DSN 228-6604M, C520-228-6604. Wx fcst by NWS KABQ. DSN 246-9707 and C505-846-9707. H24 obsn by FAA C505-246-4200. Flight Notification Service (ADCUS) available.

**AIRPORT MANAGER:** 505-244-7700

**WEATHER DATA SOURCES:** ASOS (505) 242-4044 LLWAS. WSP.

**COMMUNICATIONS:** D-ATIS 118.0 505-856-4928 UNICOM 122.95

RCO 122.55 (ALBUQUERQUE RADIO)

WEST MESA RCO 122.5 (ALBUQUERQUE RADIO)

Ⓡ APP CON 123.9 (S of V12) 127.4 (on or N of V12) 126.3

Ⓡ DEP CON 127.4 (on or N of V12) 123.9 (S of V12)

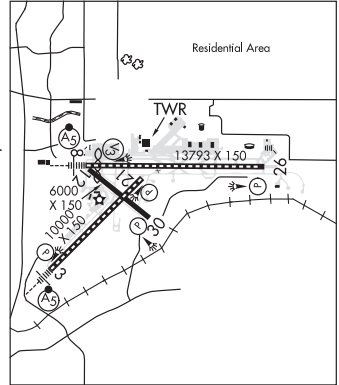
TOWER 120.3 123.775 **GND CON** 121.9 **CLNC DEL** 119.2

CPDLC (LOGON KUSA)

PDC

**AIRSPACE:** CLASS C svc etc APP CON.

**VOR TEST FACILITY (VOT)** 111.0



CONTINUED ON NEXT PAGE

## CONTINUED FROM PRECEDING PAGE

## RADIO AIDS TO NAVIGATION: NOTAM FILE ABQ.

(VH) (H) VORTACW 113.2 ABQ Chan 79 N35°02.63' W106°48.98' 079° 10.3 NM to fld. 5749/13E.

TACAN AZIMUTH unusable:

040°-055° byd 30 NM blo 15,000'

VOR unusable:

039°-078° byd 40 NM

111°-133° byd 40 NM blo 14,000'

211°-216° byd 40 NM blo 9,000'

211°-216° byd 52 NM

257°-262° byd 40 NM blo 9,000'

257°-262° NM byd 63 NM

271°-280° byd 40 NM blo 13,300'

271°-280° byd 49 NM

281°-327° byd 40 NM blo 11,000'

281°-327° byd 63 NM

327°-333° byd 40 NM blo 11,500'

ILS 111.5 I-BZY Rwy 03. Class IE.

ILS/DME 111.9 I-SPT Chan 56 Rwy 08. Class IE.

ASR

COMM/NAV/WEATHER REMARKS: PMSV OTS UFN (ltd blw 10000 ft 010-070). PTD OTS UFN.

**DOUBLE EAGLE II** (AEG)(KAEG) 7 NW UTC-7(-6DT) N35°08.69' W106°47.71'

ALBUQUERQUE

5837 B NOTAM FILE AEG

H-4K, L-8I

RWY 04-22: H7398X100 (ASPH-PFC) S-30 PCN 16 F/C/X/T MIRL

IAP, AD

0.4% up SW

RWY 04: PAPI(P4L)—GA 3.0° TCH 52'.

RWY 22: MALSR. Rgt tfc.

RWY 17-35: H5983X100 (ASPH-PFC) S-30 PCN 11 F/D/X/T MIRL

RWY 17: REIL. PAPI(P4L)—GA 3.0° TCH 52'.

RWY 35: REIL. Rgt tfc.

SERVICE: S4 FUEL 100LL, JET A1 OX 1, 3 LGT ACTVT MALSR Rwy 22; REIL Rwy 17 and 35; PAPI Rwy 04 and 17; MIRL Rwy 04-22 and 17-35—CTAF.

AIRPORT REMARKS: Attended 1300-0100Z†. 100LL avbl 24 hrs self svc with major credit card, \$150 call out fee for JET A1. For attendant after hrs call 505-884-4530. Wildlife on and invof arpt. Live fire range 1.6 NM west of the AER 04. Avoidance advised.

AIRPORT MANAGER: 505-244-7888

WEATHER DATA SOURCES: AWOS-3PT (505) 842-2009

COMMUNICATIONS: CTAF 120.15 ATIS 119.025

Ⓡ ALBUQUERQUE APP/DEP CON 127.4

TOWER 120.15 (1300-0500Z†) GND CON 121.625

CLNC DEL 124.8 (when twr clsd)

AIRSPACE: CLASS D svc 1300-0500Z†; other times CLASS G.

RADIO AIDS TO NAVIGATION: NOTAM FILE ABQ.

ALBUQUERQUE (VH) (H) VORTACW 113.2 ABQ Chan 79 N35°02.63' W106°48.98' 357° 6.1 NM to fld. 5749/13E.

TACAN AZIMUTH unusable:

040°-055° byd 30 NM blo 15,000'

VOR unusable:

039°-078° byd 40 NM

111°-133° byd 40 NM blo 14,000'

211°-216° byd 40 NM blo 9,000'

211°-216° byd 52 NM

257°-262° byd 40 NM blo 9,000'

257°-262° NM byd 63 NM

271°-280° byd 40 NM blo 13,300'

271°-280° byd 49 NM

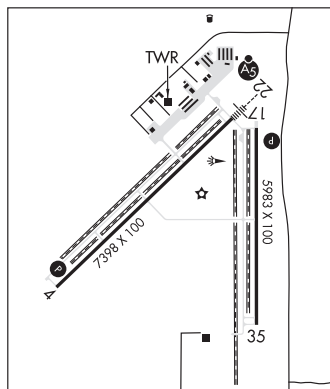
281°-327° byd 40 NM blo 11,000'

281°-327° byd 63 NM

327°-333° byd 40 NM blo 11,500'

DUDLE NDB (LOMW) 351 AE N35°13.04' W106°42.77' 212° 5.9 NM to fld. 5455/11E. NOTAM FILE AEG.

ILS 110.1 I-AEG Rwy 22. Class IT. LOM DUDLE NDB. LOM unmonitored. Unmonitored.



ANDREW OTHOLE MEML (See ZUNI on page 385)