

MANCHESTER BOSTON RGNL (MHT)(KMHT) 3 S UTC-5(-4DT)

N42°55.97' W71°26.15'

NEW YORK

266 B LRA Class I, ARFF Index C NOTAM FILE MHT

H-11D, 12K, L-32H, 33D

RWY 17-35: H9250X150 (ASPH-GRVD) S-200, D-300, 2S-175,

IAP, AD

2D-350 PCN 90 F/C/W/T HIRL CL

RWY 17: MALSR. TDZL. PAPI(P4R)—GA 3.1° TCH 67'. RVR-TMR Thld dspcd 336'. Pole. 0.3% up.

RWY 35: ALSF2. TDZL. PAPI(P4L)—GA 3.0° TCH 68'. RVR-TMR Thld dspcd 850'. Bldg. 0.8% down.

RWY 06-24: H7651X150 (ASPH-GRVD) S-200, D-300, 2S-175, 2D-350 PCN 90 F/C/W/T HIRL CL 0.3% up NE

RWY 06: REIL. PAPI(P4L)—GA 3.0° TCH 50'. RVR-TR Thld dspcd 442'. Trees.

RWY 24: REIL. PAPI(P4L)—GA 3.0° TCH 50'. RVR-TR Trees.

RUNWAY DECLARED DISTANCE INFORMATION

RWY 06: TORA-7650 TODA-7650 ASDA-7650 LDA-7208

RWY 17: TORA-9250 TODA-9250 ASDA-9250 LDA-8914

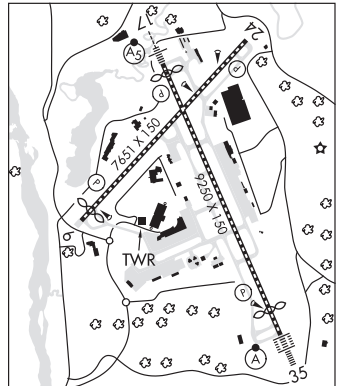
RWY 24: TORA-7650 TODA-7650 ASDA-6850 LDA-6850

RWY 35: TORA-9250 TODA-9250 ASDA-8500 LDA-7650

ARRESTING GEAR/SYSTEM

RWY 06: EMAS

SERVICE: S4 **FUEL** 10OLL, JET A **OX3** **LGT** Rwy 06 PAPI unusbl byd 6 degs R of cntrln.



NOISE: Noise abatement procedures: turbojet acft should expect a right turn when departing Rwy 17.

AIRPORT REMARKS: Attended continuously. No touch and go lds during snow removal opr. Twy A safety area S of Twy E to Twy A2 is 65 ft. Jet acft taxiing wb acrs Rwy 17-35 at Twy E must use ctn and low settings due to lgt acft prkg on the E ramp. No taxiing between pushed back acft and the airline terminal or cargo ramps. Acft not permitted to taxi between airline terminal bldg and acft that have pushed back or are taxiing on Twy G or Twy N. Air carrier acft only permitted to opr on airline terminal ramp. Air carriers excluded from Twy L. Acft with wingspan greater than 145' rstd from Twy G and Twy N. AMMON ramp rstd to acft with wingspan less than 118'. Acft are req to maintain taxilane centerline to avoid parked general aviation acft tiedowns. Acft with wingspan 118' or greater req ground crew assistance for taxi and parking. Ldg fee. U.S. Customs user fee arpt.

AIRPORT MANAGER: 603-624-6539

WEATHER DATA SOURCES: ASOS 119.55 (603) 621-1766. LAWRS.

COMMUNICATIONS: ATIS 119.55 603-621-1766 **UNICOM** 122.95

(R) BOSTON APP/DEP CON 124.9

TOWER 121.3 **GND CON** 121.9 **CLNC DEL** 135.9

AIRSPACE: CLASS C svc ctc **APP CON**.

RADIO AIDS TO NAVIGATION: NOTAM FILE MHT.

(L) (L) VOR/DME 114.4 MHT Chan 91 N42°52.11' W71°22.17' 338° 4.8 NM to fld. 470/15W.

FITZY NDB (LOMW) 209 MJ N42°51.85' W71°31.73' 060° 5.8 NM to fld. 234/15W.

ILS 109.95 I-MJE Rwy 06. Class IT. LOM FITZY NDB.

ILS/DME 109.1 I-MNA Chan 28 Rwy 17. Class IE. DME also serves Rwy 35. DME unusable 10° right of course

ILS/DME 109.1 I-MHT Chan 28 Rwy 35. Class IIIE. DME also serves Rwy 17.

MOULTONBOROUGH (4MB) 1 NE UTC-5(-4DT) N43°46.05' W71°23.26'

NEW YORK

576 B NOTAM FILE BGR

L-32H

RWY 02-20: H3505X50 (ASPH) S-8 RWY LGTS(NSTD)

RWY 02: P-line.

RWY 20: Trees.

SERVICE: S4 **FUEL** 10OLL **LGT** Actvrt rotg bcn—CTAF. 5 clicks on, 3 clicks off. Actvrt non-std LIRL Rwy 02-20 & windsock lgt—CTAF. 5 clicks on, 3 clicks off. Rwy 02-20 non-std LIRL, lghts are 4 ft high. Lgtd only btn dthrs, vrb spacing, 2890 ft of rwy lgtd. Rwy thr lgt non-std, clear lenses only.

AIRPORT REMARKS: Attended Mon-Fri 1400-2300Z±. Overfly rwy to check for wildlife. Wildlife on & invof arpt. VFR only. Nmrs non-radio equipped acft oprg fm airfld. Rwy 02 pline mkr faded. 24 hr self svc fuel avbl with credit card. Rwy 02 designated calm wind rwy. Rwy end 02 dthr area markings non-std size & spacing. Rwy 02-20 non-std cntrln size & spacing. Dthr not mkd.

AIRPORT MANAGER: 603-387-1694

COMMUNICATIONS: CTAF/UNICOM 122.8

CLEARANCE DELIVERY PHONE: For CD ctc Boston Apch at 603-594-5551.

