

SUGAR LAND RGNL (SGR)(KSGR) P 17 SW UTC-6(-5DT) N29°37.33' W95°39.39'
81 B NOTAM FILE SGR

**HOUSTON
COPTER**
H-7C, L-19D, 21A, GOMW
IAP, AD

RWY 17-35: H8000X100 (CONC) S-80, D-120, 2S-152, 2D-200,
2D/2D2-600 HIRL
RWY 17: REIL. PAPI(P2R)—GA 3.5° TCH 52'. Thld dsplcd 380'. Trees.
RWY 35: REIL. PAPI(P4L)—GA 3.0° TCH 56'. Thld dsplcd 1984'.
P-line.

SERVICE: S4 FUEL 100LL, JET A OX 1, 2 LGT When ATCT clsd actvt
REIL Rwy 17 and 35; HIRL Rwy 17-35-CTAF.

NOISE: Noise abatement proc: Noise sensitive areas—info avbl at trml.

AIRPORT REMARKS: Attended 1100-0500Z†. Birds on and invof arpt.
100LL avbl 24 hrs self serve, for JET A fuel after hrs call
281-275-2400 before 0500Z†. Sfc conds not rprtd Fri 10:00 pm to
Sun 10:00 pm. Rwy 17-35 surface not grvd. Nitrogen avbl dur
business hrs. No tgl's aft twr closes. No int depts for multi-engine acft.
Ramp fee for civ acft waived with fuel purchase. Mil and corporate gnd
transportation prvdd.

AIRPORT MANAGER: 281-275-2100

WEATHER DATA SOURCES: ASOS 118.125 (281) 242-7605.

COMMUNICATIONS: CTAF 118.65 ATIS 118.125 (1200-0400Z†) UNICOM
122.95

Ⓡ **HOUSTON APP/DEP CON** 123.8

SUGAR LAND TOWER 118.65 (1200-0400Z†)

GND CON 121.4 **CLNC DEL** 121.4 **CLNC DEL** 119.25 (When twr clsd)

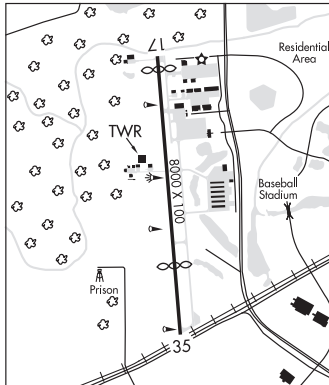
CLEARANCE DELIVERY PHONE: For CD when ATCT is clsd ctc Houston Apch at 281-443-5844 to cnl IFR at 281-443-5888.

AIRSPACE: CLASS D svc 1200-0400Z†; other times CLASS E.

RADIO AIDS TO NAVIGATION: NOTAM FILE ELA.

EAGLE LAKE (H) (H) VORW/DME 116.4 ELA Chan 111 N29°39.75' W96°19.03' O86° 34.6 NM to fld. 192/8E.

ILS/DME 110.7 I-TXH Chan 44 Rwy 35. Class IT.



WEST HOUSTON (IWS)(KIWS) 13 W UTC-6(-5DT) N29°49.09' W95°40.36'
111 B NOTAM FILE CXO

**HOUSTON
COPTER**
L-19D, 21A, GOMW
IAP

RWY 15-33: H3953X75 (ASPH) S-18, D-44 HIRL

RWY 15: REIL. PAPI(P2R)—GA 3.7° TCH 43'. Trees.

RWY 33: REIL. PAPI(P2L)—GA 3.7° TCH 44'. Road.

SERVICE: S4 FUEL 100LL, JET A OX 1, 2, 3, 4 LGT HIRL Rwy 15-33
preset low intst; to incr intst and ACTVT REIL Rwy 15 and Rwy
33-CTAF.

AIRPORT REMARKS: Attended continuously. Deep/wide ditch aprxly 25 ft
from AER 15; 40 ft and grt trees aprxly 900 ft fm AER 15; road angling
acrs apch Rwy 33. No tgl's btn 0400-1200Z†. No ngt hel trng. No
mult trng flts by hel's. Rwy 15 and rwy 33 nstd PIR markings due to
rwy len. Facility fee charged to non-patrons, waived with minimum
purchase.

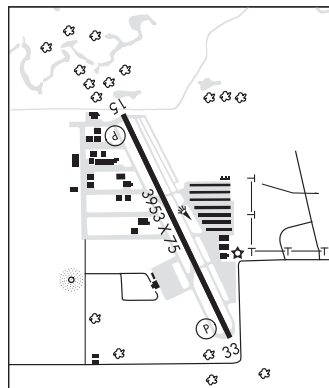
AIRPORT MANAGER: 281-492-2130

COMMUNICATIONS: CTAF/UNICOM 123.05

Ⓡ **APP/DEP CON** 123.8

CLNC DEL 121.15

CLEARANCE DELIVERY PHONE: For CD ctc Houston Apch at 281-443-5844.
to cnl IFR ctc Houston Apch at 281-443-5888.



CONTINUED ON NEXT PAGE

CONTINUED FROM PRECEDING PAGE

RADIO AIDS TO NAVIGATION: NOTAM FILE IAH.

HUMBLE (H) (H) VORTAC 116.6 IAH Chan 113 N29°57.42' W95°20.74' 239° 19.0 NM to fld. 81/5E.

- VORTAC monitored by ATCT
- VOR portion unusable:
 - 060°-070° byd 35 NM
 - 175°-185° byd 20 NM blo 3,000'
 - Byd 30 NM blo 2,000'
- DME unusable:
 - 015°-090° byd 30 NM blo 2,000'
 - 130°-320° byd 30 NM blo 2,000'
 - 175°-185° byd 20 NM blo 3,000'
 - 230°-250°
 - Byd 25° left of course
- TACAN AZIMUTH unusable:
 - 040°-055° blo 5,000'
 - 150°-320° blo 4,500'
 - 150°-320° byd 10 NM

COMM/NAV/WEATHER REMARKS: WX info avbl on 125.575, 281-579-9820. ASRI 129.875.

WILLIAM P HOBBY (HOU)(KHOU) 8 SE UTC-6(-5DT) N29°38.75' W95°16.63'

46 B AOE LRA Class I, ARFF Index C NOTAM FILE HOU

RWY 04-22: H7602X150 (CONC-GRVD) S-75, D-200, 2S-168,

2T-461, 2D-400, 2D/D1-444, C5-717 HIRL CL

RWY 04: ALSF2. TDZL. PAPI(P4R)—GA 3.0° TCH 58'. RVR-TMR

RWY 22: MALS. PAPI(P4L)—GA 3.0° TCH 49'. RVR-TMR Pole.

RWY 13R-31L: H7602X150 (ASPH-GRVD) S-75, D-195, 2S-168,

2T-461, 2D-220, 2D/D1-444, C5-717 HIRL CL

RWY 13R: MALSR. TDZL. PAPI(P4R)—GA 3.0° TCH 52'. RVR-T Thld

dsplcd 1034'. Pole.

RWY 31L: TDZL. REIL. PAPI(P4L)—GA 3.0° TCH 76'. RVR-T Road.

RWY 13L-31R: H5148X100 (CONC-GRVD) S-30, D-45, 2D-80 MIRL

RWY 13L: PAPI(P4L)—GA 3.0° TCH 60'.

RUNWAY DECLARED DISTANCE INFORMATION

RWY 04: TORA-7602 TODA-7602 ASDA-7602 LDA-7602

RWY 13L: TORA-5148 TODA-5148 ASDA-5148 LDA-5148

RWY 13R: TORA-7602 TODA-7602 ASDA-7602 LDA-6568

RWY 22: TORA-7602 TODA-7602 ASDA-7602 LDA-7602

RWY 31L: TORA-7602 TODA-7602 ASDA-7602 LDA-7602

RWY 31R: TORA-5148 TODA-5148 ASDA-5148 LDA-5148

SERVICE: S2 FUEL 100LL, JET A, A1 OX 1, 2, 3, 4

AIRPORT REMARKS: Attended continuously. Numerous birds on and in/ovf arpt. Arpt clsd to acft with wing span over 125 ft excp 24 hrs PPR call opns 713-417-5710. ASDE-X in use. Opr transponders with alt rptg mode and ADS-B (if equipped) enabled on all arpt sfcs. Pilots/crew should be aware of dep turns in excess of 180 degs. Read back of drctn of turns is highly encouraged. Cust ramp has mult obstns; large acft will be asgnd an altn area by ATCT. Acft in tkof ptn on Rwy 22 be alert for poss radio intfc or null on freq 118.7. Use upper ant if so equipped. Twy G cntrln to parked acft on west side only 68'. Twy G cntrln to edge of adjacent svc veh road on west side only 48'. Due to complex rwy config; when tax to thrs 13L and 13R check compass hdg bfr departing. Acft southbound on Twy C to Rwy 31L thr use extreme care; Twy C makes a 45 deg dogleg to the left xng Twy K. Flight Notification Service (ADCUS) available.

AIRPORT MANAGER: 281-233-7351

WEATHER DATA SOURCES: ASOS (713) 847-1462 TDWR.

COMMUNICATIONS: D-ATIS 124.6 (713) 847-1491 UNICOM 122.95

HOBBY RCO 122.35 (MONTGOMERY COUNTY RADIO)

Ⓡ **HOUSTON APP CON** 119.175 119.625 134.45 (South) 124.35 (West) 120.05 (East)

Ⓡ **HOUSTON DEP CON** 134.45 (South) 123.8 (West) 119.7 (North)

HOBBY TOWER 118.7

HOUSTON GND CON 121.9 CLNC DEL 125.45 PRE-TAXI CLNC 125.45

CPDLC (LOGON KUSA)

PDC

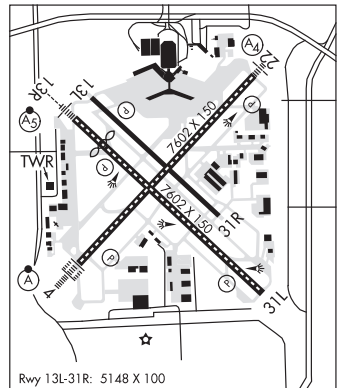
AIRSPACE: CLASS B See VFR Terminal Area Chart.

HOUSTON

COPTER

H-7C, L-19E, 21A, GOMW

IAP, AD



CONTINUED ON NEXT PAGE