

CHARLOTTE/DOUGLAS INTL (CLT)(KCLT) P (ANG) 5 W UTC-5(-4DT) N35°12.83'

CHARLOTTE

W80°56.94'

H-9B, 12G, L-25D, 36E

748 B LRA Class I, ARFF Index E NOTAM FILE CLT

IAP, AD

RWY 18C-36C: H10000X150 (CONC-GRVD) S-93, D-200, 2D-350,

2D/2D2-650 PCN 82 R/B/W/T HIRL CL

RWY 18C: MALSR. PAPI(P4R)—GA 3.0° TCH 69'. RVR-TMR Road. 0.6% down.

RWY 36C: ALSF2. TDZL. PAPI(P4L)—GA 3.0° TCH 72'. RVR-TMR 0.4% up.

RWY 18R-36L: H9000X150 (CONC-GRVD) S-93, D-200, 2D-350,

2D/2D2-650 PCN 63 R/B/W/T HIRL CL

RWY 18R: ALSF2. TDZL. PAPI(P4R)—GA 2.8° TCH 65'. RVR-TMR

RWY 36L: ALSF2. TDZL. PAPI(P4L)—GA 3.0° TCH 70'. RVR-TMR

RWY 18L-36R: H8677X150 (ASPH-CONC-GRVD) S-93, D-200,

2D-350, 2D/2D2-650 PCN 68 R/B/W/T HIRL CL

RWY 18L: REIL. PAPI(P4L)—GA 3.0° TCH 76'. RVR-TMR Railroad.

RWY 36R: ALSF2. TDZL. PAPI(P4R)—GA 3.0° TCH 71'. RVR-TMR 0.3% up.

RWY 05-23: H7502X150 (ASPH-CONC-GRVD) S-93, D-170,

2D-350, 2D/2D2-650 PCN 73 R/B/W/T HIRL CL 0.5% up NE

RWY 05: MALSR. PAPI(P4L)—GA 3.0° TCH 73'. Trees.

RWY 23: REIL. PAPI(P4R)—GA 3.0° TCH 72'.

RUNWAY DECLARED DISTANCE INFORMATION

RWY 05: TORA-7502 TODA-7502 ASDA-7092 LDA-7092

RWY 18C: TORA-10000 TODA-10000 ASDA-10000 LDA-10000

RWY 18L: TORA-8676 TODA-8676 ASDA-8676 LDA-8676

RWY 18R: TORA-9000 TODA-9000 ASDA-9000 LDA-9000

RWY 23: TORA-7502 TODA-7502 ASDA-7502 LDA-7502

RWY 36C: TORA-10000 TODA-10000 ASDA-10000 LDA-10000

RWY 36L: TORA-9000 TODA-9000 ASDA-9000 LDA-9000

RWY 36R: TORA-8676 TODA-8676 ASDA-8390 LDA-8390

ARRESTING GEAR/SYSTEM

RWY 18L: EMAS

SERVICE: S4 FUEL 100LL, JET A 0X 1, 2 MILITARY—A-GEAR Rwy 18L EMAS 255' x 170'. JASU 1(MA-1A) 6(MD-3M)

FUEL A++(Mil), A+(C704-359-0440) (NC-100LL, A). FLUID LHOX LOX OIL O-156(Mil)

AIRPORT REMARKS: Attended continuously. Be alert for flocks of migratory birds on and in/ovf arpt. Successive or simultaneous departures from Rwy 18L and Rwy 18C are approved with course divergence beginning no further than 4 miles from EOR. ASDE-X in use. Group III acft with a wingspan greater than 79' are prohibited from making a northbound turn onto Twy C when taxiing westbound on Twy A. Group III acft with a wingspan gtr than 79 ft are prohibited fm making a sbnd turn onto Twy C when taxiing nwbnd on Twy R. Group IV acft with a wingspan gtr than 118' are prohibited fm exiting Rwy 18L-36R at Twy C10. Twy C10 unusbl for taxiing onto Rwy 18L-36R. Operate transponders with altitude reporting mode and ADS-B (if equipped) enabled on all airport surfaces. Controlling ramp, non-movement area, is a controlled ramp; ctc ramp control prior to entering. Dual taxi btn dep call spots 11/12 and 13N/13S rstd to one acft less than 214' and one acft less than 118' or two acft less than 171'. Dual taxi btn dep call spots 22/23 and 24N/24S rstd to one acft with wingspan less than 118'. Twy C10 rstd to acft with wingspan less than 171' when exiting the rwy. Rwy 05 first 625' concrete grooved; second 5377' asphalt grooved; last 1500' concrete wire combed. Rwy 23 first 1500' concrete wire combed; second 5377' asphalt grooved; last 625' concrete grooved. Twy C4 and C6: when taxiing aircraft with cockpit to main gear distance greater than 90 ft, pilot must perform judgemental oversteering instead of cockpit over centerline steering. 15 mph speed restriction on Twy C from the approach of Rwy 18L to Rwy 05-23, and Twy M from the apron to Rwy 18L-36R. Twy D, restricted to 15 MPH or less with wingspan 171 FT and greater. Rwy status lgts are in opr. Flight Notification Service (ADCUS) avbl. Twy M between the terminal ramp and Twy C, as well as Twy C north of Twy M, are restricted to group V aircraft with a wingspan less than 214' (65M).

AIRPORT MANAGER: 704-359-4000

WEATHER DATA SOURCES: ASOS (704) 790-5484 LLWAS. TDWR.

COMMUNICATIONS: D-ATIS ARR 121.15 D-ATIS DEP 132.1 UNICOM 122.95

CHARLOTTE RCO 122.4 (RALEIGH RADIO)

Ⓡ **APP CON** 134.75 (296°-360° 8000' and blo) 128.325 (001°-119° 8000' and blo) 120.05 (120°-295° 8000' and blo) 124.0 (075°-245° abv 8000') 120.5 (246°-074° abv 8000') 126.15

CHARLOTTE TOWER 118.1 (Rwys 05, 18L, 23 and 36R) 126.4 (Rwy 18C-36C) 133.35 (Rwys 18R and 36L)

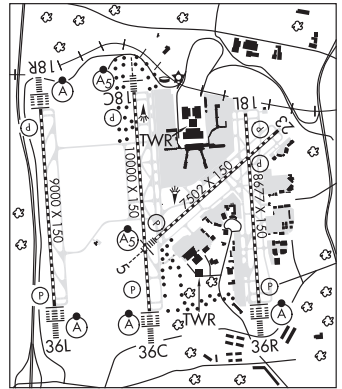
GND CON 121.8 (West) 121.9 (East)

Ⓡ **DEP CON** 134.75 (296°-360° 8000' and blo) 128.325 (001°-119° 8000' and blo) 120.05 (120°-295° 8000' and blo) 124.0 (075°-245° abv 8000') 120.5 (246°-074° abv 8000')

CLNC DEL 127.15

CPDLC (LOGON KUSA)

POC



NORTH CAROLINA

CONTINUED FROM PRECEDING PAGE

AIRSPACE: CLASS B See VFR Terminal Area Chart.

VOR TEST FACILITY (VOT) 112.0

RADIO AIDS TO NAVIGATION: NOTAM FILE CLT.

(L) (L) **VORW/DME** 115.0 CLT Chan 97 N35°11.42' W80°57.11' 010° 1.4 NM to fld. 732/5W.

DME portion unusable:

015°-050° byd 25 NM blo 3,000'

050°-100° byd 25 NM blo 2,500'

203°-220°

270°-350° byd 20 NM blo 5,000'

VORDME controlled by Charlotte ATCT

VOR unusable:

203°-220°

ILS 110.95 I-CLT Rwy 05. Class IE.

ILS/DME 111.3 I-PEP Chan 50 Rwy 18C. Class IT.

ILS/DME 110.35 I-VKQ Chan 40(Y) Rwy 18L. Class IB.

ILS/DME 110.15 I-RGS Chan 38(Y) Rwy 18R. Class IIIE.

ILS/DME 109.5 I-APU Chan 32 Rwy 23. Class IE. Glideslope unusable blw 1,100'.

ILS 111.7 I-DQG Rwy 36C. Class IIID. ILS/I unusable throughout zone 5 due structure at .56 NM.

ILS/DME 110.15 I-XUU Chan 38(Y) Rwy 36L. Class IIIE.

ILS/DME 108.9 I-BQC Chan 26 Rwy 36R. Class IIIE.

COMM/NAV/WEATHER REMARKS: Rwy sfc cond info durg duty hrs phone ANG Ops V583-9177/9144 or Airborne 292.2.

CHARLOTTE/MONROE EXEC (See MONROE on page 316)

CHERRY POINT MCAS (CUNNINGHAM FLD) (NKT)(KNKT) MC 2 NE UTC-5(-4DT) N34°54.19' **CHARLOTTE**
W76°52.85' **H-9C, L-35B**
29 B NOTAM FILE NKT Not insp. **DIAP, AD**

RWY 14L-32R: H8979X200 (ASPH) PCN 80 R/B/W/T HIRL

RWY 14L: PAPI(P4L)—GA 3.0° TCH 72'.

RWY 05L-23R: H8491X196 (ASPH) PCN 80 F/A/W/T HIRL

RWY 05L: Thld dspldc 939'.

RWY 23R: MALSR. REIL. PAPI(P4L)—GA 3.0° TCH 71'.

RWY 14R-32L: H8398X200 (ASPH) PCN 80 F/A/W/T HIRL CL

RWY 14R: Thld dspldc 847'.

RWY 32L: ALSF1. PAPI(P4L)—GA 3.0° TCH 78'.

RWY 05R-23L: H8188X200 (ASPH) PCN 80 R/B/W/T HIRL

RWY 05R: PAPI(P4L)—GA 3.0° TCH 73'.

RUNWAY DECLARED DISTANCE INFORMATION

RWY 05L:TORA-8491 TODA-8491 ASDA-8491 LDA-8491

RWY 14R:TORA-8398 TODA-8399 ASDA-8399 LDA-7553

RWY 23R:TORA-7553 TODA-8491 ASDA-8491 LDA-7552

RWY 32L:TORA-8398 TODA-8399 ASDA-8399 LDA-7553

ARRESTING GEAR/SYSTEM

RWY 14L HOOK E28(B) (1500 FT) HOOK E28(B) (2438 FT). **RWY 23R** HOOK E28(B) (1500 FT) **RWY 32L**

RWY 05R HOOK E28(B) (1500 FT)

SERVICE: **FUEL** 100LL, J5 **OX** 1, 2 **MILITARY**—LGT Portable lgt-mobile flood lgt. **A-GEAR** All E-28(B) in raised posn exc on ldg rwy. Rqr 15 min PN. **JASU** 2 working days PN rqr. 2(GTC-85) 1(NCPP-105) **FUEL** 100LL: Hot pit refuel avbl. **FLUID** SP PRESAIR HPOX LOX DE-ICE **TRAN ALERT** PPR min 24 hrs in advance. Tran acft with inert ordnance, hot pit refuel ltd to F18, USAF F15, F16, and A10 acft only. IAW Cherry Point airops maint. Ltd tran maint avbl 1200-2100Z† Mon-Fri.

CONTINUED ON NEXT PAGE