

GRAND FORKS INTL (GFK)(KGFK) 5 NW UTC-6(-5DT) N47°56.84' W97°10.43'

TWIN CITIES
H-21, L-14G
IAP, AD

845 B TPA-1645(800) AOE ARFF Index-See Remarks NOTAM FILE GFK MON Airport

RWY 17R-35L: H7351X150 (ASPH-GRVD) S-75, D-160, 2S-175, 2D-270, 2D/D1-438, C5-840 PCN 35 R/C/W/T HIRL

RWY 17R: REIL. PAPI(P4L)-GA 3.0° TCH 53'. RVR-R Rgt tfc.

RWY 35L: MALSR. PAPI(P4L)-GA 2.76° TCH 61'. RVR-T

RWY 09L-27R: H4206X100 (CONC-GRVD) S-43, D-55, 2D-115 PCN 24 R/B/W/T MIRL

RWY 09L: PAPI(P4L)-GA 3.0° TCH 39'.

RWY 27R: REIL. PAPI(P4L)-GA 3.0° TCH 48'. Rgt tfc.

RWY 17L-35R: H3901X75 (CONC) S-12.5 PCN 9 R/C/W/T MIRL

RWY 17L: PAPI(P4L)-GA 3.0° TCH 21'.

RWY 35R: PAPI(P4L)-GA 3.0° TCH 21'. Rgt tfc.

RWY 09R-27L: H3300X60 (CONC) S-12.5 PCN 10 R/C/W/T MIRL

RWY 09R: PAPI(P2L)-GA 3.0° TCH 21'. Rgt tfc.

RWY 27L: PAPI(P2L)-GA 3.0° TCH 21'.

LAND AND HOLD-SHORT OPERATIONS

LDG RWY	HOLD-SHORT POINT	AVBL LDG DIST
RWY 27R	17R-35L	3000
RWY 35L	09L-27R	4600

RUNWAY DECLARED DISTANCE INFORMATION

RWY 09L: TORA-4206 TODA-4206 ASDA-4206 LDA-4206
RWY 09R: TORA-3300 TODA-3300 ASDA-3300 LDA-3300
RWY 17L: TORA-3901 TODA-3901 ASDA-3901 LDA-3901
RWY 17R: TORA-7351 TODA-7351 ASDA-7351 LDA-7351
RWY 27L: TORA-3300 TODA-3300 ASDA-3300 LDA-3300
RWY 27R: TORA-4206 TODA-4206 ASDA-4206 LDA-4206
RWY 35L: TORA-7351 TODA-7351 ASDA-7351 LDA-7351
RWY 35R: TORA-3901 TODA-3901 ASDA-3901 LDA-3901

SERVICE: S4 FUEL 100LL, JET A OX3 LGT Actvt REIL Rwy 27R and Rwy 17R-CTAF. When twr clsd actvt HIRL Rwy 17R-35L and MALSR Rwy 35L; MIRL Rwy 09L-27R-CTAF. PAPI Rwy 27R, PAPI Rwy 27R, PAPI Rwy 09L/R, 17L/R, 27L and 35L/R opr consly.

AIRPORT REMARKS: Attended continuously. Birds on and invof arpt. Heavy student training activity within 15 miles of airport. Heavy student helicopter training at arpt between parallel twys. PAEW 0530-1200Z† (2330-0600 local). Class I, ARFF Index B. ARFF Index C svcs avbl with 24hr PPR, call arpt manager on 701-795-6984. Rwy 09L, 09R, 27L, 27R, 17L, 35R, Twy C, Twy E, Twy S not avbl for skedd acr opns with more than 9 psgr seats or unskedd acr opns with at least 31 psgr seats. When twr clsd snow removal equipment operators monitor CTAF. Lgtd entrance road 1600' east of Rwy 17R-35L. Rwy 09R, Rwy 27L, Rwy 17L and Rwy 35R CLOSED when twr clsd. Rwy 17R segmented circle U/S. Western most 100 ft of Twy C1 is an extension of the Bravo apron and not visible from the twr. Alpha apron btn Twy A3 and Twy A4 rstd to acct max wt 60,000 lbs or max ACN 24. Twy G and Twy U clsd to fixed wing acct 12,500 lbs and over. CUSTOMS avbl 24/7/365, you must speak with an officer before arrival (use phone options), 701-772-3301 or 701-772-6433.

AIRPORT MANAGER: 701-795-6981

WEATHER DATA SOURCES: ASOS (701) 772-3486

COMMUNICATIONS: CTAF 118.4 ATIS 119.4 UNICOM 122.95

RCO 122.2 (GRAND FORKS RADIO)

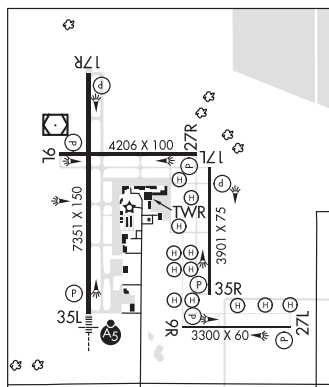
Ⓡ GRAND FORKS APP/DEP CON 118.1 (1100-0430Z†; clsd hol. OT ctc Minneapolis Center)

Ⓡ MINNEAPOLIS CENTER APP/DEP CON 132.15

TOWER 118.4 (1200-0530Z†; clsd Hol) GND CON 124.575 CLNC DEL 135.725

CLEARANCE DELIVERY PHONE: For CD if una to ctc on FSS freq, ctc Minneapolis ARTCC at 651-463-5588.

AIRSPACE: CLASS D svc 1200-0530Z†; other times CLASS E.



CONTINUED ON NEXT PAGE

CONTINUED FROM PRECEDING PAGE

RADIO AIDS TO NAVIGATION: NOTAM FILE GFK.

(H) (H) VORW/DME 114.3 GFK Chan 90 N47°57.29' W97°11.12' at fld. 840/9E.

HISER NDB (LOMW) 345 GF N47°50.79' W97°10.89' 357° 6.1 NM to fld. 861/6E.

ILS/DME 109.1 I-GFK Chan 28 Rwy 35L. Class IE. LOM HISER NDB. Unmonitored when ATCT clsd. DME unmonitored. Localizer backcourse unusable byd 25° left and right of course; unusable byd 15 NM.

COMM/NAV/WEATHER REMARKS: Freq 121.5 not available at twr. Weather available on ATIS when twr closed.

• • • • •
HELIPAD H1: 60X60 (TURF)

HELIPAD H2: 60X60 (TURF)

HELIPAD H3: 60X60 (TURF)

HELIPAD H4: 60X60 (TURF)

HELIPAD H5: 60X60 (TURF)

HELIPAD H6: 60X60 (TURF)

HELIPAD H7: 60X60 (TURF)

HELIPAD H8: 60X60 (TURF)

HELIPAD H9: 60X60 (TURF)

HELIPAD H10: 60X60 (TURF)

HELIPAD H11: 60X60 (TURF)

HELIPAD H12: 60X60 (TURF)

WINNER—ROGER MELROE FLD (GWR)(KGWR) 1 SE UTC-6(-5DT) N46°13.10' W97°38.60'

TWIN CITIES

1266 B NOTAM FILE GFK

H-2H, L-14G

RWY 16-34: H5000X75 (CONC) S-14, D-19 MIRL

IAP

RWY 16: REIL. PAPI(P2L)—GA 3.0° TCH 25'.

RWY 34: REIL. PAPI(P2L)—GA 3.0° TCH 25'.

RWY 06-24: 2991X100 (TURF) 0.5% up SW

SERVICE: FUEL 100LL, JET A LGT ACTIVATE REIL Rwy 16 and Rwy 34, PAPI Rwy 16 and Rwy 34, and MIRL Rwy 16-34 —CTAF.

AIRPORT REMARKS: Unattended. Deer and birds on and invof arpt. Self svc fuel avbl 24 hrs with credit card. Rwy 06-24 CLOSED winter months. Rwy 16 +480' lgtd tower 17,500' fm thld 3000' right of extended centerline. Cfm winter conds and Rwy 16-34 sn removal call 701-680-8000; 701-308-0169; city maint 701-680-0081. Rwy 06-24 no thld or rwy edge markers.

AIRPORT MANAGER: 701-680-8000

WEATHER DATA SOURCES: AWOS-3 118.325 (701) 678-6801.

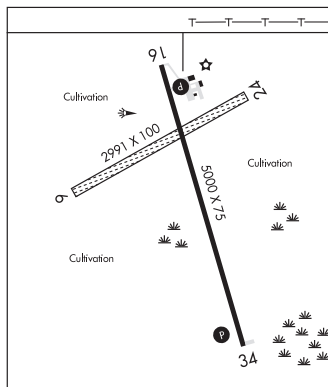
COMMUNICATIONS: CTAF/UNICOM 122.7

® MINNEAPOLIS CENTER APP/DEP CON 127.35

CLEARANCE DELIVERY PHONE: For CD ctc Minneapolis ARTCC at 651-463-5588.

RADIO AIDS TO NAVIGATION: NOTAM FILE FAR.

FARGO (VH) (DH) VORW/DME 116.2 FAR Chan 109 N46°45.20' W96°51.08' 217° 45.9 NM to fld. 909/9E.



HARRY STERN (See WAHPETON on page 357)