

NOORVIK

ROBERT/BOB/CURTIS MEML (D76)(PFNO) 1 SE UTC-9(-8DT) N66°49.05' W161°01.34'

NOME
H-1A, L-4I
IAP

55 B NOTAM FILE D76

RWY 06-24: 4000X100 (GRVL-DIRT) MIRL

RWY 06: PAPI(P4R)—GA 3.0° TCH 25'.

SERVICE: LGT ACTVT PAPI Rwy 06; MIRL Rwy 06-24—CTAF.

AIRPORT REMARKS: Unattended. Rwy cond unmntd; rcmd visual insp bfr lndg. Rwy 06-24 mkd with lgts and plastic mkr. Winter snow removal—mnt CTAF. Cold temperature airport. Altitude correction required at or below -23C.

AIRPORT MANAGER: 907-442-3147

WEATHER DATA SOURCES: AWOS-3P 120.00 (907) 636-2010.

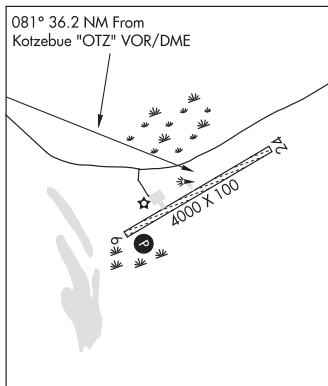
COMMUNICATIONS: CTAF 122.7

Ⓡ **ANCHORAGE CENTER APP/DEP CON** 119.2

RADIO AIDS TO NAVIGATION: NOTAM FILE OTZ.

KOTZEBUE (H) (H) VOR/DME 115.7 OTZ Chan 104 N66°53.14' W162°32.40' 081° 36.2 NM to fld. 121/15E.

COMM/NAV/WEATHER REMARKS: For LC to Kotzebue FSS dial 907-442-3310. For a toll free call to Kotzebue FSS dial 1-866-478-7460. For a toll free call to Fairbanks FSS dial 1-866-248-6516



NORTH POLE

AIRWAY (5AK3) PVT 2 NE UTC-9(-8DT) N64°46.39' W147°20.03'

FAIRBANKS

480 NOTAM FILE

RWY 15-33: 2550X45 (GRVL)

RWY 15: Road.

RWY 33: Trees.

AIRPORT REMARKS: Unattended. Rwy not maintained or monitored, recommend visual inspection prior to use. No facilities. Ski equipped acct opr only in the fall, winter, and spring. PPR for transient aircraft, write to Airway, Inc., P.O. Box 55506 North Pole, AK 99705. Wind indicator on apch end 33.

AIRPORT MANAGER: (907) 347-1460

COMMUNICATIONS: CTAF 122.8

COMM/NAV/WEATHER REMARKS: For a toll free call to Fairbanks FSS dial 1-866-248-6516, for a local call to Fairbanks FSS dial 907-474-0137.

BRADLEY SKY-RANCH (95Z) 1 NW UTC-9(-8DT) N64°45.55' W147°23.26'

FAIRBANKS

L-3A, 3D, 4J

483 NOTAM FILE FAI

RWY 15-33: 4100X60 (GRVL-DIRT)

RWY 15: Road.

RWY 33: Road. Rgt tfc.

NOISE: For noise abatement owner requests pilots maintain maximum feasible altitude when landing on Rwy 15.

AIRPORT REMARKS: Attended daylight hours. Recommend visual inspection prior landing. Hard packed snow surface is maintained on rwy Nov-Apr. Be alert: Ultralight and glider activity on and in/ov arpt. Dirt road crosses apchs to Rwy 15 and Rwy 33. Rwy 15-33 thlds marked with panels.

AIRPORT MANAGER: 907-488-9792

COMMUNICATIONS: CTAF/UNICOM 122.8

SUAIS 125.3 126.3 (1800-758-8723).

RADIO AIDS TO NAVIGATION: NOTAM FILE FAI.

FAIRBANKS (H) (H) VORTACW 108.6 FAI Chan 23 N64°48.00'

W148°00.72' 077° 16.2 NM to fld. 1526/21E.

TACAN AZIMUTH unusable:

065°-100° byd 30 NM

270°-330° byd 10 NM bto 10,000'

270°-330° byd 30 NM

COMM/NAV/WEATHER REMARKS: For a toll free call to Fairbanks FSS dial 1-866-248-6516, for a local call to Fairbanks FSS dial 907-474-0137.

