

TATALINA LRRS (TLJ)(PATL) AF 7 S UTC-9(-8DT) N62°53.69' W155°58.68'

MC GRATH

933 NOTAM FILE PATL Not insp.

L-3C

RWY 17-35: 3820X150 (GRVL) 1.1% up N

DIAP

RWY 17: REIL. PAPI(P2R)—GA 5.0° TCH 52'. Hill.

RWY 35: REIL. PAPI(P2L)—GA 3.0° TCH 40'.

SERVICE: **MILITARY**—LGT PAPI Rwy 17 baffled and unusable byd 5° right of centerline.

MILITARY REMARKS: Attended 24 hr. CLOSED weekends and holidays. Rwy 17 and 35 2 X 3 ft orange mkr. Rwy 17-35 lateral slope; W edge higher than E edge. Exp turb both ends. After initial ctc expect a 30 min delay for rwy cond. USAF installation; civ ops req Indg pmt bfr arr 907-552-1448/4176. Same day NLT 1 hr PPR bfr dep D317-552-1106/1040, C907-552-1106/1040. Pax req coord bfr non emerg travel to site—D317-552-4400/9630 or C907-552-4400/9630. CALP-D317-552-1448/4176 or in writing—Attn: 11 AF AMGR 10471 20th Street Suite 231 Elmendorf AFD AK 99506.

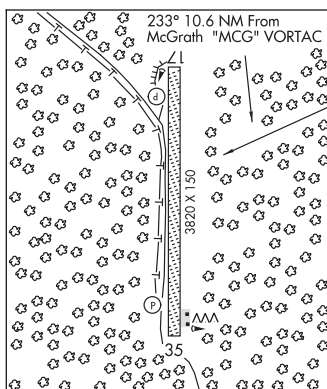
AIRPORT MANAGER: 907-552-4400

WEATHER DATA SOURCES: AWOS-3 (907) 552-1106 (WX CAM)

COMMUNICATIONS: CTAF 126.2

RCO 122.3 (KENAI RADIO)

COMM/NAV/WEATHER REMARKS: For a toll free call to Kenai FSS dial 1-866-864-1737.



TATITLEK (7KA)(PAKA) O NW UTC-9(-8DT) N60°52.34' W146°41.47'

ANCHORAGE

62 B NOTAM FILE JNU

L-1A, 3D, 4G

RWY 13-31: 3701X75 (GRVL) MIRL 0.6% up NW

IAP

RWY 13: Brush.

RWY 31: Brush.

SERVICE: LGT Actvt MIRL Rwy 13-31—CTAF.

AIRPORT REMARKS: Unattended. Rwy cond not mntd; rcmd visual insp prior to Indg. High trrn NW-SE. Rwy 31 sfc slopes up. Rwy 13 thr 45 ft hydr. Rwy 13-31, safety area 150 by 4300 ft; all sides rough with pot holes and lrg rocks. Segmented circles overgrown.

AIRPORT MANAGER: 907-835-5658

COMMUNICATIONS: CTAF 122.7

VALDEZ RCO 122.2 (JUNEAU RADIO)

® ANCHORAGE CENTER APP/DEP CON 119.3

RADIO AIDS TO NAVIGATION: NOTAM FILE JNU.

JOHNSTONE POINT (H) (H) VOR/DME 116.7 JOH Chan 114

N60°28.86' W146°35.96' 335° 23.7 NM to fld. 48/18E.

wx cam

VOR unusable:

090°-124° byd 23 NM blo 8,000'

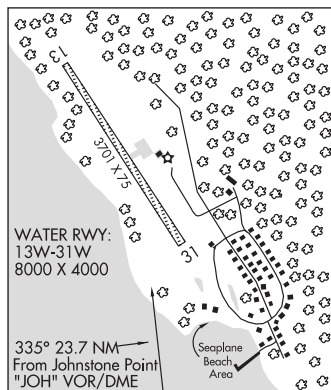
125°-188° byd 10 NM

DME unusable:

090°-124° byd 23 NM blo 12,000'

125°-191° byd 10 NM

COMM/NAV/WEATHER REMARKS: For a toll free call to Juneau FSS dial 1-866-297-2236.



WATERWAY 13W-31W: 8000X4000 (WATER)

SEAPLANE REMARKS: Unattended. Waterway condition not monitored, recommend visual inspection prior to using. Be alert: rocks in water area low tide.