

**DEADHORSE** (SCC)(PASC) 0 SE UTC-9(-8DT) N70°11.69' W148°27.91'

**POINT BARROW**

67 B ARFF Index—See Remarks NOTAM FILE SCC

H-1A, L-4J

**RWY 06-24:** H6500X150 (ASPH-GRVD) S-120, D-250, 2D-550

IAP

PCN 76 F/A/W/T HIRL CL

**RWY 06:** MALSR. VASI(V4L)—GA 3.0° TCH 50'. RVR-T Rgt tfc.

**RWY 24:** MALSR. VASI(V4L)—GA 3.0° TCH 54'. RVR-T

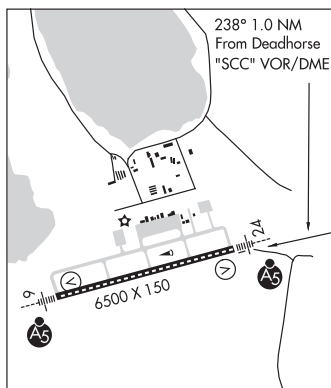
**RUNWAY DECLARED DISTANCE INFORMATION**

**RWY 06:** TORA-6500 TODA-6500 ASDA-6500 LDA-6500

**RWY 24:** TORA-6500 TODA-6500 ASDA-6500 LDA-6500

**SERVICE:** FUEL 100, JET A LGT When FSS clsd ACTVT MALSR Rwy 06 & 24; HIRL Rwy 06-24—CTAF. HIRL Rwy 06-24 preset low intst; incr intst—123.6.

**AIRPORT REMARKS:** Attended 1500-0330Z†. Waterfowl invof arpt; caribou on rwy & mov areas. Fuel avbl 1500-0300Z† - 122.85 or 907-659-6215. Arpt maint duty hrs 1500-0330Z†; airfield svc aft hr—amgr. Snow removal, wildlife control, cond reporting, and other airfield maint services only avbl and valid during arpt maint duty hrs. Colville ramp clsd due to pavement damage UFN. Ctc arpt mgmt for any after—hours req for airfield services. Class I, ARFF Index B. Clsd to acr ops more than 30 pax seats exc PPR in writing — amgr, PO Box 340002, Prudhoe Bay, AK 99734. ARFF svc PPR in writing — amgr. TSA regulated; see 49 CFR 1542. All gates & doors must be secured at all times. Tsnt or unfamiliar pilots — amgr for info. NOTE: See Notices—Drone Activity at Coastal Airport Launch Sites.



**AIRPORT MANAGER:** 907-328-7130

**WEATHER DATA SOURCES:** ASOS 118.4 (907) 659-2591. (WX CAM)

**COMMUNICATIONS:** CTAF 123.6 AFIS 118.4 (1500-0630Z† OT ctc Fairbanks FSS) UNICOM 123.0

FSS SCC (DEADHORSE RCO) 1500-0630Z†OT CTC FAIRBANKS FAI)

**DEADHORSE RADIO** 121.5 122.2 123.6 (LAA 123.6)

Ⓐ ANCHORAGE CENTER APP/DEP CON 134.4

**AIRSPACE:** CLASS E svc continuous.

**RADIO AIDS TO NAVIGATION:** NOTAM FILE SCC.

(H) (H) VORW/DME 113.9 SCC Chan 86 N70°11.95' W148°24.97' 238° 1.0 NM to fld. 54/17E.

DME unusable:

143°-190° blo 2,300'

143°-190° byd 16 NM

VOR unusable:

145°-158° blo 3,000'

145°-158° byd 15 NM blo 4,000'

145°-158° byd 20 NM blo 5,000'

145°-158° byd 25 NM blo 6,000'

145°-158° byd 30 NM blo 10,000'

**PUT RIVER NDB (HW)** 376 PVQ N70°13.36' W148°24.97' 194° 2.0 NM to fld. 51/17E.

**ILS/DME** 109.3 I-SCC Chan 30 Rwy 06. Class IT.

**COMM/NAV/WEATHER REMARKS:** Local call to Deadhorse FSS dial 659-2401. For a toll free call to Fairbanks FSS dial 1-866-248-6516. Wx obs when Deadhorse FSS clsd - 133.55 or 907-659-2401. AFIS operd by SCC FSS when open, OT Fairbanks FSS.

**INIGOK** (4AK1) PVT 96 W UTC-9(-8DT) N70°00.23' W153°04.65'

**POINT BARROW**

191 B NOTAM FILE FDC Not insp.

H-1A, L-4J

**RWY 02-20:** 5000X150 (GRVL) 0.6% up S

**AIRPORT REMARKS:** Unattended. Closed to the public. Bureau of Land Management (BLM) installation. All acct ops shall obtain a permit prior to intended Idg. Ctc the BLM Arctic Fld Office, 1150 University Avenue, Fairbanks, AK 99709 ([http://www.blm.gov/ak/st/en/fo/fdo/arctic\\_field\\_office.html](http://www.blm.gov/ak/st/en/fo/fdo/arctic_field_office.html)) or call 907-474-2200 to apply for a permit 45 days prior to intended Idg. Failure to obtain and have onboard an apvd permit will result in trespass violations and possibly criminal and civ actions. Rwy not maintained, recommend visual inspection prior to Idg. Rwy 02 multiple soft spots last 2000'. 25' antenna 650' NW of Rwy 02.

**AIRPORT MANAGER:** 907-474-2200

**COMMUNICATIONS:** CTAF/UNICOM 122.8

**COMM/NAV/WEATHER REMARKS:** For a local call to Barrow FSS dial 852-2511. For a toll free call to Fairbanks FSS dial 1-866-248-6516.

**DEADHORSE** PTZ N70°08.36' W146°16.66'/56

**POINT BARROW**

AWOS-3P 125.125 (907) 685-3590 AWOS-3P associated with Point Thomson airstrip 37AA.