

**ALLIANCE MUNI** (AIA)(KAIA) 3 SE UTC-7(-6DT) N42°03.19' W102°48.23'

3931 B Class III, ARFF Index A NOTAM FILE AIA

**RWY 12-30:** H9203X150 (ASPH-AFSC) S-36, D-48, 2D-80

PCN 42 F/A/W/U MIRL

**RWY 12:** REIL. VASI(V4L)—GA 3.0° TCH 39'.**RWY 30:** MALSR. PAPI(P4L)—GA 3.0° TCH 53'.**RWY 17-35:** H6311X75 (ASPH) S-24, D-30 PCN 17 F/A/W/U**RWY 08-26:** H6190X75 (ASPH-PFC) S-36, D-48, 2D-80

PCN 28 F/A/W/U MIRL

**RUNWAY DECLARED DISTANCE INFORMATION****RWY 08:** TORA-6190 TODA-6190 ASDA-6190 LDA-6190**RWY 12:** TORA-9202 TODA-9202 ASDA-9202 LDA-9202**RWY 17:** TORA-6311 TODA-6311 ASDA-6311 LDA-6311**RWY 26:** TORA-6200 TODA-6200 ASDA-6200 LDA-6200**RWY 30:** TORA-9202 TODA-9202 ASDA-9202 LDA-9202**RWY 35:** TORA-6311 TODA-6311 ASDA-6311 LDA-6311**SERVICE:** S4 **FUEL** 100LL, JET A **LGT** Actvt MALSR Rwy 30; REIL Rwy 12; VASI Rwy 12; PAPI Rwy 30; MIRL Rwy 12-30 and Rwy 08-26—CTAF.**AIRPORT REMARKS:** Attended continuously. Migratory waterfowl on and in/ovf arpt. Ultralight and glider ops on and in/ovf arpt. Haying ops on interior of arpt during summer months. Rwy 08-26 designated calm wind.

Aerial spraying ops on and in/ovf arpt. Occasional use by acct with no radio. Back taxiing. Rwy 17-35 unavbl for use by air carriers. Rwy 17-35 not avbl for sked acr ops with more than 9 psgr seats or unsked acr at least 31 psgr seats.

**AIRPORT MANAGER:** 308-762-4512**WEATHER DATA SOURCES:** ASOS 135.075 (308) 762-1221.**COMMUNICATIONS:** CTAF/UNICOM 123.0

RCO 122.3 (COLUMBUS RADIO)

Ⓡ **DENVER CENTER APP/DEP CON** 127.95**CLEARANCE DELIVERY PHONE:** For CD if una to ctc on FSS freq, ctc Denver ARTCC at 303-651-4257.**RADIO AIDS TO NAVIGATION:** NOTAM FILE AIA.(VL) (DH) **VORW/DME** 111.8 AIA Chan 55 N42°03.34' W102°48.27' at fld. 3925/11E.

VOR unusable:

001°-058° byd 40 NM

059°-069° byd 40 NM blo 5,600'

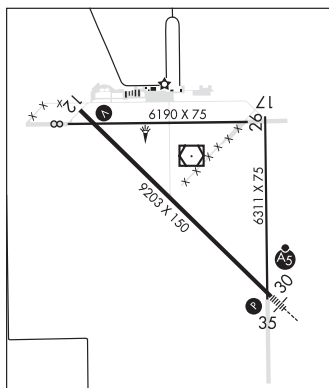
070°-360° byd 40 NM

**ILS/DME** 108.35 I-BYE Chan 20(Y) Rwy 30. Class IE. Unmonitored.

CHEYENNE

H-5A, L-12G

IAP, AD

**ALMA****ALMA MUNI** (4D9) 1 NE UTC-6(-5DT) N40°06.75' W99°20.79'

2073 B NOTAM FILE OLU

**RWY 17-35:** H3200X60 (CONC) MIRL 0.3% up N**RWY 17:** PAPI(P2L)—GA 3.0° TCH 40'. Road.**RWY 35:** PAPI(P2L)—GA 3.0° TCH 40'.**SERVICE:** **FUEL** 100LL **LGT** ACTIVATE MIRL Rwy 17-35; PAPI Rwy 17 and Rwy 35—CTAF. Beacon lgt clear and green.**AIRPORT REMARKS:** Unattended. Self svc fuel avbl 24 hrs via credit card system. Unmarked, unlighted twr 6 NM northwest of arpt at 2458' MSL. Segmented circle concrete in ground.**AIRPORT MANAGER:** 308-470-0563**COMMUNICATIONS:** CTAF 122.9Ⓡ **DENVER CENTER APP/DEP CON** 132.7**CLEARANCE DELIVERY PHONE:** For CD ctc Denver ARTCC at 303-651-4257.

OMAHA

L-10H

IAP

