

MORRISVILLE—STOWE STATE (MVL)(KMVL) 2 SW UTC-5(-4DT) N44°32.06' W72°36.84'

MONTREAL

733 B NOTAM FILE MVL

L-32G

RWY 01-19: H3700X75 (ASPH) S-25 PCN 12 F/A/X/T HIRL

IAP

0.5% up N

RWY 01: REIL. P-line.

RWY 19: REIL. PAPI(P2L)—GA 3.5° TCH 31'.

SERVICE: LGT ACTIVATE REIL Rwy 01 and Rwy 19, PAPI Rwy 19, HIRL Rwy 01-19—CTAF.

AIRPORT REMARKS: Unattended. Rwy conds may not be mnt or rptd when the arpt is unatndd. Rwy 01 glidr ops R tfc. 3 ft swales mid 1/3 of rwy on E & W sides outside of rwy safety area. Cold temperature airport. Altitude correction required at or below -20C.

AIRPORT MANAGER: 802-585-5586

WEATHER DATA SOURCES: ASOS 135.625 (802) 888-7934.

COMMUNICATIONS: CTAF/UNICOM 122.8

Ⓡ **BOSTON CENTER APP/DEP CON** 135.7

CLEARANCE DELIVERY PHONE: For CD ctc Boston ARTCC at 603-879-6859.

RADIO AIDS TO NAVIGATION: NOTAM FILE BTV.

BURLINGTON (VL) (L) VOR/DME 117.5 BTV Chan 122 N44°23.83' W73°10.96' 086° 25.8 NM to fld. 417/15W.

VOR unusable:

030°-086° byd 40 NM

075°-132° byd 30 NM blo 9,000'

087°-097° byd 40 NM blo 9,000'

087°-097° byd 49 NM

098°-169° byd 40 NM

133°-165° byd 30 NM blo 8,000'

170°-180° byd 40 NM blo 5,800'

170°-180° byd 47 NM

181°-196° byd 40 NM

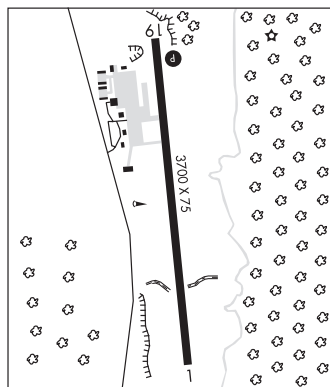
244°-292° byd 40 NM

340°-010° byd 40 NM

DME unusable:

075°-132° byd 30 NM blo 9,000'

133°-165° byd 30 NM blo 8,000'



NEWPORT

NORTHEAST KINGDOM INTL (EFK)(KEFK) 3 SW UTC-5(-4DT) N44°53.29' W72°13.72'

MONTREAL

934 B LRA NOTAM FILE BTV

H-11D, L-32H

RWY 18-36: H5301X100 (ASPH) S-30, D-44 PCN 33 F/D/X/T MIRL

IAP

RWY 18: REIL. PAPI(P4L)—GA 3.0° TCH 43'. Thld displcd 299'.

RWY 36: REIL. PAPI(P4L)—GA 3.0° TCH 44'. Pole.

RWY 05-23: H3996X100 (ASPH) S-30, D-44

RWY 05: Trees.

RWY 23: Pole.

SERVICE: S4 FUEL 100LL, JET A+ LGT ACTVT PAPI Rwy 18 and 36; MIRL Rwy 18-36—CTAF.

AIRPORT REMARKS: Attended 1400-2200Z±. Fuel 24/7 self serve. Mobile fuel vehicle when attended. Rwy conditions may not be monitored or reported when the arpt is unattended. Gulls on and in vicinity of arpt. Cold temperature airport. Altitude correction required at or below -32C.

AIRPORT MANAGER: 802-585-5586

WEATHER DATA SOURCES: AWOS-3P 118.275 (802) 334-4427.

COMMUNICATIONS: CTAF/UNICOM 122.8

NEWPORT RCO 122.5 (BURLINGTON RADIO)

Ⓡ **BOSTON CENTER APP/DEP CON** 135.7

CLEARANCE DELIVERY PHONE: For CD ctc Boston ARTCC at 603-879-6859.

RADIO AIDS TO NAVIGATION: NOTAM FILE BML.

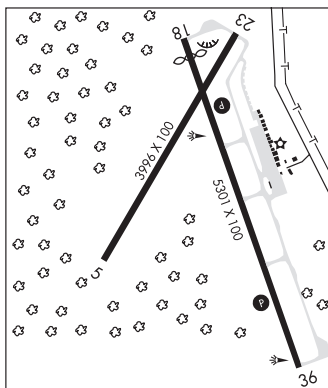
BERLIN (H) DME 116.55 BML Chan 112(Y) N44°38.01' W71°11.17' 289° 47.1 NM to fld. 1730.

DME unusable:

080°-125° blo 10,000'

188°-198° blo 10,000'

275°-292° blo 10,000'



NORTHEAST KINGDOM INTL (See NEWPORT on page 335)