

SHELBURNE (VT8) 2 S UTC-5(-4DT) N44°21.62' W73°13.58'

MONTREAL

325 NOTAM FILE BTV

RWY 01-19: 3077X60 (TURF)

RWY 01: Trees.

RWY 19: Trees.

SERVICE: S4 FUEL MOGAS

AIRPORT REMARKS: Attended daylight hours. No line of sight btn rwy ends. For rwy cond-AMGR.

AIRPORT MANAGER: 802-985-2100

COMMUNICATIONS: CTAF/UNICOM 122.8

CLEARANCE DELIVERY PHONE: For CD ctc Burlington Apch at 802-657-4413, when Apch clsd ctc Boston ARTCC at 603-879-6859.

SMUTO N43°42.37' W72°57.40' NOTAM FILE RUT.

NEW YORK

NDB (MHW) 221 DYO 193° 10.6 NM to Rutland/Southern Vermont Rgnl. 1138/15W.

L-32G

NDB unusable:

351°-189° byd 15 NM

SPRINGFIELD**HARTNESS STATE (SPRINGFIELD)** (VSF)(KVSF) 3 NW UTC-5(-4DT) N43°20.62' W72°31.04'

NEW YORK

578 B TPA—See Remarks NOTAM FILE VSF

H-11D, 12K, L-32G

RWY 05-23: H5501X100 (ASPH) S-32, D-45 MIRL 0.3% up SW

IAP

RWY 05: REIL. VASI(V4L)—GA 4.0° TCH 59'. Trees.

RWY 23: Trees.

RWY 11-29: H3000X75 (ASPH) S-30 MIRL 0.3% up W

RWY 11: Trees.

SERVICE: S4 FUEL 100LL, JET A, A+ LGT ACTVT REIL Rwy 05; MIRL Rwy 05-23 and 11-29—CTAF.

NOISE: Noise sensitive area west of arpt.

AIRPORT REMARKS: Attended Jan-Dec Sun-Sat 1200-2300Z. Geese on and invof arpt. Gliders on and invof arpt. Rwy conditions may not be monitored or reported when the arpt is unattended. Rwy 23 is preferred for day, VFR, no wind conditions. TPA—1658(1100) single engine, 2158(1600) multi-engine. Maintain recommended TPA on downwind leg for Rwy 05. Apron and Twys A and B pavement capacity is S-46, D-62. Cold temperature airport. Altitude correction required at or below -20C.

AIRPORT MANAGER: 802-585-5586

WEATHER DATA SOURCES: ASOS 121.425 (802) 886-6006.

COMMUNICATIONS: CTAF/UNICOM 122.8

SPRINGFIELD RCO 122.5 (BURLINGTON RADIO)

Ⓡ BOSTON CENTER APP/DEP CON 134.7

CLEARANCE DELIVERY PHONE: For CD if una to ctc on FSS freq, ctc Boston ARTCC at 603-879-6859 .

RADIO AIDS TO NAVIGATION: NOTAM FILE LEB.

LEBANON (L) DME 113.7 LEB Chan 84 N43°40.73' W72°12.96' 213° 24.0 NM to fld. 1443.

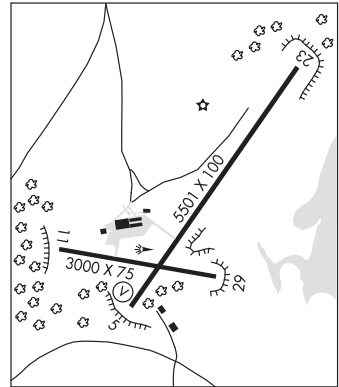
DME unusable:

045°-075° byd 36 NM blo 10,000'

091°-119° byd 30 NM blo 7,500'

161°-304° byd 30 NM blo 6,300'

LOC/DME 111.3 I-VSF Chan 50 Rwy 05. LOC/DME unmonitored. DME unusable byd 11 NM blw 3,500'; byd 20° r of course.

**VERGENNES****BASIN HARBOR** (B06) 4 NW UTC-5(-4DT) N44°11.50' W73°21.52'

MONTREAL

124 NOTAM FILE BTV

RWY 02-20: 3000X90 (TURF)

RWY 02: Trees.

RWY 20: Trees.

AIRPORT REMARKS: Attended May 15-Oct 15 SR-SS. Arpt CLOSED from late Fall to early Spring—ctc arpt manager 802-475-2311. Gliders on and invof arpt. Birds on and invof arpt. Primary surface area deficient, cluttered with 50' trees either side of south half of rwy. Rwy 20 thld outlined with orange barrels and turf cones. Rwy surface soft after heavy rain. Call for conditions.

AIRPORT MANAGER: 802-475-2311

COMMUNICATIONS: CTAF/UNICOM 122.8

CLEARANCE DELIVERY PHONE: For CD ctc Burlington Apch at 802-657-4414, when Apch clsd ctc Boston ARTCC at 603-879-6859.