

ARTHURDALE**TITUS FLD** (7ØD) 2 W UTC-5(-4DT) N39°29.93' W79°51.19'

CINCINNATI

1863 NOTAM FILE EKN

RWY 09-27: 2400X50 (TURF) 1.0% up W**RWY 09:** Trees.**RWY 27:** Tree.**AIRPORT REMARKS:** Unattended. Deer on and invof rwy. Ultralights prohibited. 25' trees along edge of rwy. Rwy 27 has 8' dropoff 25' from thld. Rwy 09-27 potentially hazardous sfc variation in rwy safety area. Rwy 09-27 sfc rough, soft when wet, loose rock on sfc.**AIRPORT MANAGER:** 304-864-6996**COMMUNICATIONS:** CTAF 122.9**CLEARANCE DELIVERY PHONE:** For CD ctc Clarksburg Apch at 304-842-2011, when Apch clsd ctc Cleveland ARTCC at 440-774-0226.**BECKLEY****RALEIGH CO MEML** (BKW)(KWKW) 3 E UTC-5(-4DT) N37°47.24' W81°07.45'

CINCINNATI

2504 B ARFF Index—See Remarks NOTAM FILE BKW

H-10G, 12H, L-26I
IAF**RWY 01-19:** H6750X150 (ASPH-GRVD) S-75, D-150, 2S-140,

2D-200 PCN 38 F/B/W/U HIRL 0.7% up S

RWY 01: REIL. PAPI(P4L)—GA 3.0° TCH 40'.**RWY 19:** MALSR. PAPI(P4L)—GA 3.0° TCH 55'.**RWY 10-28:** H5001X100 (ASPH) S-45, D-60 PCN 38 F/B/W/U MIRL

0.3% up E

RWY 10: REIL. VASI(V4R)—GA 3.0° TCH 61'.**RWY 28:** REIL. VASI(V4L)—GA 3.75° TCH 66'.**RUNWAY DECLARED DISTANCE INFORMATION****RWY 01:** TORA-6750 TODA-6750 ASDA-6750 LDA-6750**RWY 10:** TORA-5001 TODA-5001 ASDA-5001 LDA-5001**RWY 19:** TORA-6750 TODA-6750 ASDA-6750 LDA-6750**RWY 28:** TORA-5001 TODA-5001 ASDA-5001 LDA-5001**SERVICE:** S4 FUEL 100LL, JET A LGT Actvt MALSR Rwy 19; REIL Rwy 01, 10, and 28; VASI Rwy 10 and 28; MIRL Rwy 10-28; HIRL Rwy 01-19; twy lgts—CTAF. PAPI Rwy 01 and 19 set at medium, ctc UNICOM to change instst. Rwy 28 VGSJ and descent angles not coincident.**AIRPORT REMARKS:** Attended continuously. Deer, birds and wild turkeys on and invof arpt. Class I, ARFF Index B. PPR 24 hrs for unsked acr opns with more than 30 psgr seats; call amgr 304-255-0476. Index B coverage is prvdd.**AIRPORT MANAGER:** 304-255-0476**WEATHER DATA SOURCES:** ASOS 121.55 (304) 253-5214.**COMMUNICATIONS:** CTAF/UNICOM 123.0

③ CHARLESTON APP/DEP CON 125.4

AIRSPACE: CLASS E.**RADIO AIDS TO NAVIGATION:** NOTAM FILE BKW.**BECKLEY (H) (DH) VORW/DME** 117.7 BKW Chan 124 N37°46.82' W81°07.41' at fld. 2517/6W.

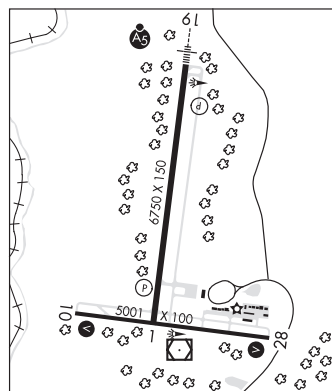
DME unusable:

080°-215° byd 15 NM

VOR unusable:

070°-200°

ILS 111.7 I-MQU Rwy 19. Class IB.

**BECKLEY** N37°46.82' W81°07.41' NOTAM FILE BKW.

CINCINNATI

(H) (DH) VORW/DME 117.7 BKW Chan 124 at Raleigh Co Meml. 2517/6W.

H-10G, 12H, L-26I

DME unusable:

080°-215° byd 15 NM

VOR unusable:

070°-200°