

**BANGOR**

**BANGOR INTL** (BGR)(KBGR) P (ANG ARNG) 3 W UTC-5(-4DT) N44°48.45' W68°49.69'

HALIFAX  
H-110, L-321  
IAP, DIAP, AD

192 B TPA—See Remarks LRA ARFF Index—See Remarks NOTAM FILE BGR

**RWY 15-33:** H11440X200 (ASPH-GRVD) S-100, D-210, 2D-400

PCN 120R/A/W/T HIRL CL

**RWY 15:** ALSF2. TDZL. PAPI(P4L)—GA 3.0° TCH 55'. RVR-TMR 0.4% down.

**RWY 33:** MALSR. PAPI(P4L)—GA 3.0° TCH 57'. RVR-TMR Trees.

**RUNWAY DECLARED DISTANCE INFORMATION**

**RWY 15:** TORA-11440 TODA-11440 ASDA-11440 LDA-11440

**RWY 33:** TORA-11440 TODA-11440 ASDA-11440 LDA-11440

**SERVICE:** S4 FUEL 100LL, JET A OX2, 4 MILITARY—JASU 1(MD-3)

1(MC-11) (MA-1A) FUEL A++ (Mil), A, A+ (C207-992-4600)

(NC-100LL) FLUID SP PRESAIR LPOX LOX -Off-base contracted LOX

avbl H24-rqr 24 hr notice. OIL O-133-148(Mil)

**AIRPORT REMARKS:** Attended continuously. TPA for turbo jet acft is

2000(1808) unless otherwise instructed. ARFF Index B with Index E

capabilities avbl 24/7. Flight Notification Service (ADCUS) available.

**MILITARY REMARKS:** Transient acft may be diverted to civilian side during

non-duty hrs & weekends. Fee required; no ANG transient alert.

**CAUTION** Bash Phase II period Sep-Nov, Apr-May. Expect increased

bird activity. Ctc Base Ops/Command Post/SOF for current bird

watching cond. MISC Rwy 15-33 grooved. ANG Opr 1100-1930Z‡

Mon-Fri, clsd weekends and hol. PPR rqr for ANG ramp. Ctc afld mgmt DSN 698-7232, C207-404-7232 for PPR dur

opr hrs. Pre-coord all transportation requirements and and haz cargo with PPR rqr. PPR valid +/- 1 hr unless prior coord.

3 hr out call, 30 min out call 311.0 to CFM customs/AG and tran svc. Comd post C207-404-7788 24 hrs. ARNG Opr

1230-2100Z‡ Mon-Fri exc hol. Ltd maint. J8. PPR May-Oct svc DSN 626-1100.

**AIRPORT MANAGER:** 207-992-4600

**WEATHER DATA SOURCES:** ASOS 127.75 (207) 561-2515.

**COMMUNICATIONS:** ATIS 127.75 (207-561-2524) UNICOM 122.95

RCO 122.2 (BANGOR RADIO)

Ⓡ APP/DEP CON 118.925 124.5

TOWER 120.7 GND CON 121.9 CLNC DEL 135.9

AIRSPACE: CLASS C svc ctc APP CON.

RADIO AIDS TO NAVIGATION: NOTAM FILE BGR.

(VH) (H) VORTACW 114.8 BGR Chan 95 N44°50.51' W68°52.44' 155° 2.8 NM to fld. 360/19W.

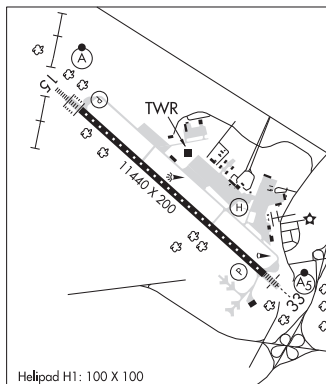
ILS/DME 109.5 I-JVH Chan 32 Rwy 15. Class IIIE. DME also serves Rwy 33.

ILS/DME 109.5 I-BGR Chan 32 Rwy 33. Class IIE. DME also serves Rwy 15. DME unusable byd 26° r of course.

ASR

.....

HELIPAD H1: H100X100 (CONC)



**LUCKY LANDING MARINA SPB** (Ø6B) 7 N UTC-5(-4DT) N44°54.42' W68°48.30'

HALIFAX

115 LRA NOTAM FILE BGR

**WATERWAY 02W-20W:** 15000X4000 (WATER)

**WATERWAY 02W:** Rgt tfc.

**SERVICE:** FUEL 100LL

**SEAPLANE REMARKS:** Attended Apr-Oct dalgt hrs, unattended Nov-Mar. To vfy conditions and for fuel aft hrs call

207-951-2406. Water ldg area not marked. Rwy 02W wires on shore marked.

**AIRPORT MANAGER:** 207-951-2406

**COMMUNICATIONS:** CTAF 122.9

**CLEARANCE DELIVERY PHONE:** For CD ctc Bangor Apch at 207-561-2500 ext 1.

**BANKS** (See SWANS ISLAND on page 88)