

CONTINUED FROM PRECEDING PAGE

CLEARANCE DELIVERY PHONE: For CD if una to ctc on FSS freq, ctc Seattle ARTCC at 253-351-3694.

RADIO AIDS TO NAVIGATION: NOTAM FILE ELN.

ELLENSBURG (VH) (DH) VOR/DME 117.9 ELN Chan 126 N47°01.46' W120°27.50' 261° 3.0 NM to fld. 1771/21E.

VOR unusable:

- 001°-024° byd 40 NM
- 025°-040° byd 25 NM
- 040°-065° byd 34 NM
- 065°-075° byd 34 NM blo 18,000'
- 075°-080° byd 34 NM
- 081°-089° byd 40 NM
- 090°-158° byd 10 NM
- 158°-163° byd 27 NM
- 163°-248° byd 33 NM
- 248°-268° byd 33 NM blo 10,000'
- 288°-296° byd 40 NM
- 300°-350° byd 25 NM
- 350°-025° byd 25 NM blo 18,000'

DME unusable:

- 025°-070° byd 21 NM
- 070°-090° byd 34 NM
- 090°-158° byd 10 NM
- 158°-163° byd 27 NM
- 163°-268° byd 33 NM
- 300°-350° byd 21 NM
- 350°-025° byd 15 NM

ELWHA N48°09.01' W123°40.22' NOTAM FILE CLM.

NDB (MHW/LOM) 515 CL 089° 7.1 NM to William R Fairchild Intl. 1096/16E.

NDB unusable:

- 100°-235° byd 12 NM

SEATTLE
L-1E

EPHRATA MUNI (EPH)(KEPH) 2 SE UTC-8(-7DT) N47°18.48' W119°31.01'

1276 B NOTAM FILE EPH MON Airport

RWY 03-21: H5500X75 (ASPH) S-30, D-60, 2S-114 MIRL

RWY 03: REIL. PAPI(P4L)—GA 3.0° TCH 40'. Ground. Rgt tfc. 0.3% up.

RWY 21: REIL. PAPI(P4L)—GA 3.0° TCH 40'.

RWY 11-29: H3843X60 (ASPH) S-12 MIRL

RWY 11: REIL. Ground.

RWY 29: REIL. PAPI(P2L)—GA 3.0° TCH 40'.

RWY 04-22: H3467X150 (ASPH) S-12

RWY 22: Rgt tfc.

SERVICE: S2 FUEL 100LL LGT ACTVT REIL Rwy 03, 11, 21 and 29; MIRL Rwy 03-21 and MIRL Rwy 11-29—CTAF. PAPI Rwy 29, Rwy 03 and Rwy 21 opr consly.

AIRPORT REMARKS: Attended Mon-Fri 1530-0000Z‡. Conditions not monitored Mon-Fri 0000-1500Z‡, conditions not monitored Sat-Sun and hol. Fuel 24 hr credit card svc avbl. Rwy 04-22 glds use 1 Apr to 1 Nov. Be alert aerobatic acft activity over center of arpt. Ultralight activity invof arpt. Heavy glider activity from apron area Apr-Oct.

AIRPORT MANAGER: 509-754-3508

WEATHER DATA SOURCES: ASOS 135.775 (509) 754-3761.

COMMUNICATIONS: CTAF/UNICOM 122.8

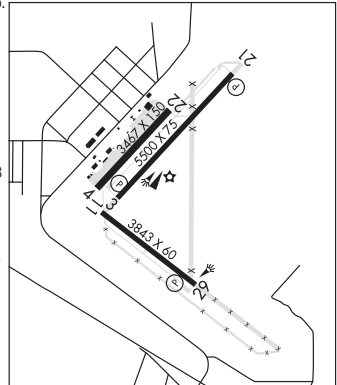
RCO 122.2 (SEATTLE RADIO)

® GRANT COUNTY APP/DEP CON 126.4 (1400-0600Z‡)

® SEATTLE CENTER APP/DEP CON 126.1 (0600-1400Z‡)

CLEARANCE DELIVERY PHONE: For CD if una to ctc on FSS freq, ctc Grant County Apch at 509-762-2842. when Apch clsd ctc Seattle ARTCC at 253-351-3694.

SEATTLE
H-1C, L-13A
IAP



CONTINUED ON NEXT PAGE

CONTINUED FROM PRECEDING PAGE

AIRSPACE: CLASS E svc 1400-0600Z; other times CLASS G.

RADIO AIDS TO NAVIGATION: NOTAM FILE EPH.

(VH) (H) VORTACW 112.6 EPH Chan 73 N47°22.68' W119°25.44' 201° 5.7 NM to fld. 1250/21E.

VOR unusable:

010°-014° byd 40 NM
042°-054° byd 40 NM
214°-228° byd 40 NM blo 7,000'
214°-228° byd 52 NM blo 10,000'
214°-228° byd 77 NM
229°-247° byd 40 NM
310°-350° byd 25 NM blo 6,500'
310°-353° byd 40 NM
358°-004° byd 40 NM

TACAN AZIMUTH unusable:

280°-295° byd 25 NM blo 7,000'
310°-350° byd 25 NM blo 6,500'

DME unusable:

280°-295° byd 25 NM blo 7,000'
310°-350° byd 25 NM blo 6,500'

COMM/NAV/WEATHER REMARKS: UNICOM mntd intntly.
