

## HOQUIAM

**BOWERMAN** (HQM)(KHQM) 2 W UTC-8(-7DT) N46°58.27' W123°56.19'

SEATTLE  
H-1B, L-1D  
IAP

18 B LRA NOTAM FILE HQM

**RWY 06-24:** H5000X150 (ASPH) S-30, D-40, 2D-80 HIRL

**RWY 06:** REIL. PAPI(P4R)—GA 3.0° TCH 40'. Rgt tfc.

**RWY 24:** MALSR. PAPI(P4L)—GA 3.5° TCH 55'.

**SERVICE:** FUEL 100LL, JET A LGT ACTIVATE HIRL Rwy 06-24, PAPI

Rwy 06-24, MALSR Rwy 24 and REIL Rwy 06—CTAF.

**AIRPORT REMARKS:** Unattended. 100LL and Jet A avbl 24 hrs a day with major credit card. Flocks of waterfowl on and in/ovf arpt. 103' crane 0.2 NM southwest of AER 24. Svc road south of rwy in primary sfc.

Ultralights prohibited without written permission from arpt mgr.

**AIRPORT MANAGER:** 360-533-9544

**WEATHER DATA SOURCES:** ASOS 135.775 (360) 538-7021.

**COMMUNICATIONS:** CTAF/UNICOM 122.7

HOQUIAM RCO 122.2 (SEATTLE RADIO)

Ⓡ SEATTLE CENTER APP/DEP CON 128.3

**CLEARANCE DELIVERY PHONE:** For CD if una to ctc on FSS freq, ctc Seattle ARTCC at 253-351-3694.

**AIRSPACE:** CLASS E.

**RADIO AIDS TO NAVIGATION:** NOTAM FILE HQM.

**HOQUIAM (VH) (H) VORTACW** 117.7 HQM Chan 124 N46°56.82' W124°08.96' 062° 8.9 NM to fld. 10/19E.

VOR unusable:

017°-024° byd 40 NM

037°-042° byd 40 NM

053°-058° byd 40 NM

066°-079° byd 40 NM

081°-091° byd 40 NM blo 4,000'

081°-091° byd 55 NM blo 5,000'

081°-091° byd 62 NM

092°-137° byd 40 NM

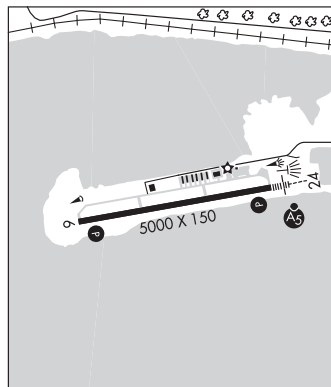
154°-157° byd 40 NM

195°-208° byd 40 NM

268°-273° byd 40 NM

357°-004° byd 40 NM

**ILS/DME** 108.7 I-HQM Chan 24 Rwy 24. Class IT.



**HOQUIAM** N46°56.82' W124°08.96' NOTAM FILE HQM.

SEATTLE  
H-1B, L-1D

**(VH) (H) VORTACW** 117.7 HQM Chan 124 062° 8.9 NM to Bowerman. 10/19E.

VOR unusable:

017°-024° byd 40 NM

037°-042° byd 40 NM

053°-058° byd 40 NM

066°-079° byd 40 NM

081°-091° byd 40 NM blo 4,000'

081°-091° byd 55 NM blo 5,000'

081°-091° byd 62 NM

092°-137° byd 40 NM

154°-157° byd 40 NM

195°-208° byd 40 NM

268°-273° byd 40 NM

357°-004° byd 40 NM

**RCO** 122.2 (SEATTLE RADIO)

**HOSKINS FLD** (See OLYMPIA on page 252)

## ILWACO

**PORT OF ILWACO** (7W1) 2 E UTC-8(-7DT) N46°18.89' W124°00.23'

SEATTLE

13 B NOTAM FILE SEA

**RWY 10-28:** H2080X50 (ASPH) S-5

**RWY 10:** Trees.

**RWY 28:** PAPI(P2L)—GA 4.0°. Thld dspcd 300'. Trees.

**SERVICE:** LGT Arpt bcn pilot activated.

**AIRPORT REMARKS:** Unattended. Rwy 10 markings faded. Rwy 28 markings faded.

**AIRPORT MANAGER:** 360-642-3143

**COMMUNICATIONS:** CTAF 122.9

**CLEARANCE DELIVERY PHONE:** For CD ctc Seattle ARTCC at 253-351-3694.