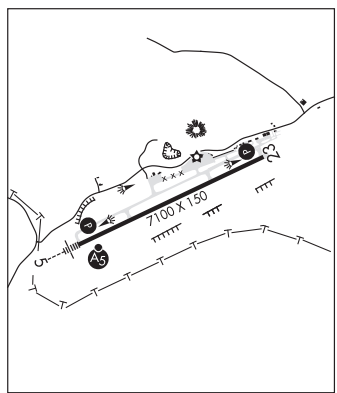


PULLMAN/MOSCOW RGNL (PUW)(KPUW) 3 NE UTC-8(-7DT) N46°44.50' W117°06.70'
 2567 B Class I, ARFF Index B NOTAM FILE PUW
RWY 05-23: H7100X150 (ASPH-GRVD) S-120, D-239, 2D-385
 PCN 68 F/C/X/T HIRL

SEATTLE
 H-1C, L-13B
 IAP, AD

RWY 05: MALSR. PAPI(P4L)—GA 3.0° TCH 49'. RVR-T Fence.
RWY 23: REIL. PAPI(P4R)—GA 3.4° TCH 58'. RVR-R Ground.
RUNWAY DECLARED DISTANCE INFORMATION
RWY 05: TORA-7100 TODA-7100 ASDA-7100 LDA-7100
RWY 23: TORA-7100 TODA-7100 ASDA-7100 LDA-7100
SERVICE: S4 FUEL 100LL, JET A LGT ACTIVATE MALSR Rwy 05; REIL Rwy 23; PAPI Rwy 05 and 23; HIRL Rwy 05-23—CTAF.



AIRPORT REMARKS: Attended 1600-0200Z. CLOSED to unscheduled air carrier ops with more than 30 pax seats exc PPR call arpt mgr 509-338-3223. Parachute Jumping. Non-paved areas soft. No parking between rwy and twy and within 30' of twy to the northwest. No non-paved acft ops auth. Ldg fee for all coml acft and all itinerant acft over 7,000 lbs.

AIRPORT MANAGER: 509-338-3223
WEATHER DATA SOURCES: ASOS 135.675 (509) 334-3222.
COMMUNICATIONS: CTAF/UNICOM 122.8
 RCO 122.6 (SEATTLE RADIO)

Ⓡ SEATTLE CENTER APP/DEP CON 123.95
CLEARANCE DELIVERY PHONE: For CD if una to ctc on FSS freq, ctc Seattle ARTCC at 253-351-3694.
AIRSPACE: CLASS E svc 1400-0600Z Mon-Fri, 1700-0000Z Sat, 1900-0600Z Sun; other times CLASS G.
RADIO AIDS TO NAVIGATION: NOTAM FILE PUW.

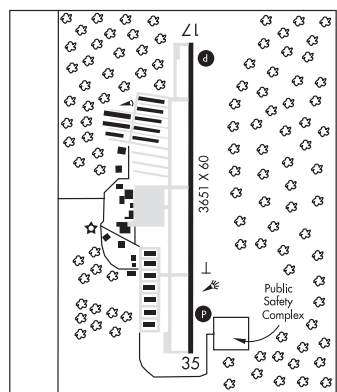
(V) (L) VOR/DME 117.15 PUW Chan 118(Y) N46°40.45' W117°13.41' 029° 6.1 NM to fld. 2772/20E. DME unmonitored.
 DME unusable:
 040°-045° byd 35 NM blo 8,000'
 065°-070° byd 30 NM blo 7,000'
 090°-095° byd 35 NM blo 7,000'
 VOR unusable:
 032°-100° byd 40 NM
 155°-195° byd 40 NM
ILS/DME 110.35 I-PUW Chan 40(Y) Rwy 05. Class IE.

PUYALLUP

PIERCE CO - THUN FLD (PLU)(KPLU) 5 S UTC-8(-7DT) N47°06.24' W122°17.23'
 538 B NOTAM FILE PLU
RWY 17-35: H3651X60 (ASPH) MIRL

SEATTLE
 L-1D
 IAP

RWY 17: REIL. PAPI(P4L)—GA 4.0° TCH 53'. Trees.
RWY 35: REIL. PAPI(P4R)—GA 4.0° TCH 53'. Road.
SERVICE: S4 FUEL 100LL OX 4 LGT ACTVT REIL Rwys 17 and 35; PAPI Rwys 17 and 35 and MIRL Rwy 17-35—CTAF.
NOISE: Noise sensitive all quadrants.
AIRPORT REMARKS: Attended 1600-2200Z. Fuel avbl 24 hrs with credit card. Ultralights prohibited.
AIRPORT MANAGER: 253-798-3779
WEATHER DATA SOURCES: AWOS-3 128.575 (253) 848-2748.
COMMUNICATIONS: CTAF/UNICOM 122.7



Ⓡ SEATTLE APP/DEP CON 126.5
 CLNC DEL 121.85
CLEARANCE DELIVERY PHONE: For CD ctc Seattle Apxh at 206-214-4723.
RADIO AIDS TO NAVIGATION: NOTAM FILE TCM.
MCCHORD (T) TACAN Chan 33 TCM (109.6) N47°08.86' W122°28.50' 094° 8.1 NM to fld. 283/15E.
 No NOTAM MP 0800-2300Z Wed