

**ARCHER CITY MUNI** (T39) 1 SE UTC-6(-5DT) N33°34.94' W98°37.12'

DALLAS-FT WORTH  
L-17B

1065 NOTAM FILE FTW

RWY 17-35: H3200X60 (ASPH-TURF) S-12.5

RWY 17: Road.

SERVICE: S2

**AIRPORT REMARKS:** Unattended. Wildlife on and invof arpt. Rwy 17-35 CLOSED indefinitely; under repair. Rwy 17-35 loose grvl, tall grass on rwy. Rwy mostly turf.

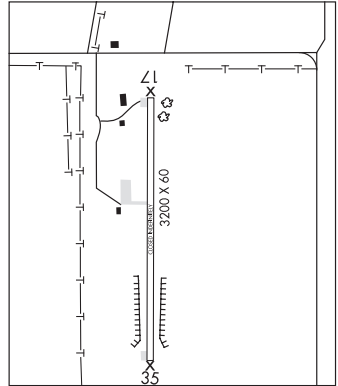
**AIRPORT MANAGER:** 940-631-4519

**COMMUNICATIONS:** CTAF 122.9

**CLEARANCE DELIVERY PHONE:** For CD ctc Fort Worth ARTCC at 817-858-7584.

**RADIO AIDS TO NAVIGATION:** NOTAM FILE SPS.

**WICHITA FALLS (H) (H) VORTACW** 112.7 SPS Chan 74 N33°59.24' W98°35.61' 173° 24.3 NM to fld. 1133/10E.



**ARESTI AERODROME** (See GODLEY on page 320)

**ARLEDGE FLD** (See STAMFORD on page 427)

**ARLINGTON MUNI** (GKY)(KGKY) 4 S UTC-6(-5DT) N32°39.83' W97°05.66'

DALLAS-FT WORTH  
COPTER  
H-6H, L-17C, A  
IAP, AD

628 B NOTAM FILE GKY

RWY 16-34: H6080X100 (CONC) S-60 MIRL 0.5% up NW

RWY 16: REIL. PAPI(P4L)—GA 3.0° TCH 42'.

RWY 34: MALSR. PAPI(P4L)—GA 3.0° TCH 55'.

**SERVICE:** S4 FUEL 100LL, JET A OX4 LGT MIRL Rwy 16-34 preset med intst; higher intst by ATCT req. When ATCT clsd ACTVT MALSR Rwy 34—CTAF.

**AIRPORT REMARKS:** Attended continuously. 100LL self serve fuel. Extsv hel tfc west of rwy.

**AIRPORT MANAGER:** 817-459-5571

**WEATHER DATA SOURCES:** ASOS 127.375 (817) 557-0251.

**COMMUNICATIONS:** CTAF 128.625

Ⓡ REGIONAL APP/DEP CON 118.1 124.3 125.2 125.8 135.975 (North)  
125.8 135.975 (South) 118.1 125.8

**TOWER** 128.625 (1300-0300Z±) **GND CON/CLNC DEL** 121.875

**CLNC DEL** 118.85 (RGNL APP CON when twr clsd)

**AIRSPACE:** CLASS D svc 1300-0300Z±; other times CLASS G.

**RADIO AIDS TO NAVIGATION:** NOTAM FILE FTW.

**MAVERICK (VH) (H) VORW/DME** 113.1 TTT Chan 78 N32°52.15' W97°02.43' 186° 12.6 NM to fld. 536/6E.

All acft arriving DFW are requested to turn DME off until departure due to traffic overload of Maverick DME

DME unusable:

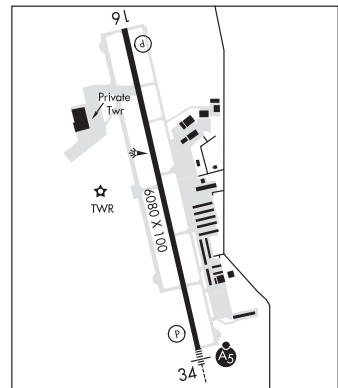
180°-190° byd 10 NM

240°-260° byd 20 NM blo 3,500'

VOR unusable:

105°-110° byd 40 NM

**ILS/DME** 111.55 I-GKY Chan 52(Y) Rwy 34. Class IE. LOC unusable byd 15° right of course. Unmonitored when ATCT clsd.



**ARVILLA** N33°03.98' W96°03.68' NOTAM FILE GVT.

DALLAS-FT WORTH  
L-17D

(T) **TACAN** 109.6 MJF Chan 33 at Majors. 543/5E.

DME unusable:

024°-034° byd 16 NM blo 3,000'

080°-095° byd 5 NM

TACAN AZIMUTH unusable:

024°-034° byd 16 NM blo 3,000'

080°-095° byd 5 NM

212°-222° byd 12 NM blo 3,500'