

GALVESTON

SCHOLES INTL AT GALVESTON (GLS)(KGLS) 3 SW UTC-6(-5DT) N29°15.92'

HOUSTON

W94°51.63'

6 B LRA NOTAM FILE GLS MON Airport

COPTER

RWY 18-36: H6001X150 (CONC) S-74, D-92, 2D-162 MIRL

H-7C, L-19E, 21A, GOMW

RWY 18: REIL. PAPI(P4L)—GA 3.0° TCH 44'.

IAP, AD

RWY 36: REIL. PAPI(P4L)—GA 3.0° TCH 45'. Bldg.

RWY 14-32: H6000X150 (ASPH-CONC) S-90, D-115, 2D-192 HIRL

RWY 14: MALSR. PAPI(P4L)—GA 3.0° TCH 52'.

RWY 32: REIL. PAPI(P4L)—GA 3.0° TCH 46'. Bldg.

RUNWAY DECLARED DISTANCE INFORMATION

RWY 14: TORA-6000 TODA-6000 ASDA-6000 LDA-6000

RWY 18: TORA-6001 TODA-6001 ASDA-6001 LDA-6001

RWY 32: TORA-6000 TODA-6000 ASDA-6000 LDA-6000

RWY 36: TORA-6001 TODA-6001 ASDA-6001 LDA-6001

SERVICE: S4 FUEL 100LL, JET A LGT HIRL Rwy 14-32, MIRL Rwy

18-36 preset med instst. When ATCT clsd ACTVT MALSR Rwy

14—CTAF.

AIRPORT REMARKS: Attended 1200-0200Z†. Flocks of birds invof arpt blw

200 ft AGL. Hcls oprg on and invof arpt. 100LL aft hrs svc

409-750-0195. 178 ft lgtd bldg 2000 ft NE of Rwy 18 thr. PAEW adj

nwys and twys. Rwy 14-32 first 1,300' NW end is conc. Flight

Notification Service (ADCUS) available.

AIRPORT MANAGER: 409-797-3590

WEATHER DATA SOURCES: ASOS 123.950 (409) 740-5483.

COMMUNICATIONS: CTAF 120.575 UNICOM 123.05

GALVESTON RCO 122.2 (MONTGOMERY COUNTY RADIO)

® HOUSTON APP/DEP CON 134.45

TOWER 120.575 (1200-0000Z†) GND CON 118.625 CLNC DEL 135.35

CLEARANCE DELIVERY PHONE: For CD when ATCT is clsd ctc Houston Apch at 281-443-5844 to cnl IFR at 281-443-5888.

AIRSPACE: CLASS D svc 1200-0000Z†; other times CLASS E.

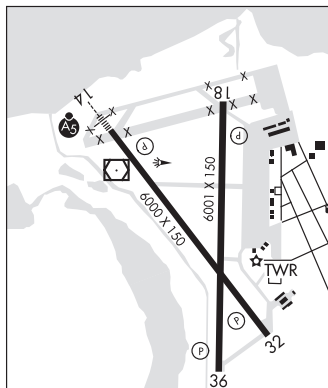
RADIO AIDS TO NAVIGATION: NOTAM FILE GLS.

(VH) (DH) VORW/DME 113.0 VUH Chan 77 N29°16.16' W94°52.06' at fld. 4/6E.

VOR unusable.

285°-295° byd 35 NM blo 2,500'

ILS 111.7 I-GLS Rwy 14.



GALVESTON 209B GVV N29°07.82' W94°32.79'/121

AWOS-3 118.25 (832) 917-1465

HOUSTON, HOUSTON TAC

L-19E, L-21A, GOMW

GARDEN BANKS 668 GUL N27°18.23' W93°32.30'

AWOS-3 119.025 Winds unreliable.

L-21B, GOMW

GARLAND/DFW HELOPLEX HELIPORT (T57) 2 SW UTC-6(-5DT) N32°53.22' W96°41.10'

DALLAS—FT WORTH

601 B NOTAM FILE FTW

COPTER

HELIPAD H1: H105X105 (CONC) PERIMETER LGTS

HELIPAD H2: H54X54 (CONC)

SERVICE: S4 FUEL 100LL, JET A LGT Peri lgts low instst SS-SR, to incr instst—CTAF.

HELIPORT REMARKS: Attended Mon-Sat 1400-0000Z†, Sun 1500-2300Z†. Helipad H1 egress/ingress north and south.

Helipad H1 648' twr 1 mile north, 34' bldg 170' north, 48' antenna 352' east, 30' bldg 442' south, 35' bldg 379'

west. Helipad H2 egress/ingress N. Rwy H2 under construction.

AIRPORT MANAGER: 214-349-7000

COMMUNICATIONS: CTAF/UNICOM 123.05

CLEARANCE DELIVERY PHONE: For CD ctc Regional Apch at 972-615-2799.

GARNER FLD (See UVALDE on page 435)

GARYS N29°57.52' W97°56.94' NOTAM FILE HYI.

NDB (LOMW) 272 RU 124° 6.0 NM to San Marcos Rgnl. 819/7E.

SAN ANTONIO