

LAREDO INTL (LRD)(KLRD) 3 NE UTC-6(-5DT) N27°32.65' W99°27.70'

508 B AOE Class I, ARFF Index B NOTAM FILE LRD

RWY 18R-36L: H8743X150 (CONC-GRVD) S-90, D-190, 2S-140,
2D-415, 2D/2D2-820 HIRL

RWY 18R: MALSR. PAPI(P4L)—GA 3.0° TCH 50'.

RWY 36L: PAPI(P4L)—GA 3.0° TCH 50'. Thld dspcd 120'. Rgt tfc.
0.4% up.

RWY 18L-36R: H8236X150 (CONC-GRVD) S-90, D-190, 2S-175,
2D-360 HIRL

RWY 18L: PAPI(P4L)—GA 3.0° TCH 51'.

RWY 36R: Rgt tfc. 0.4% up.

RWY 14-32: H5927X150 (CONC) S-50, D-60, 2D-125 MIRL
0.6% up NW

RWY 14: VASI(V4L)—GA 3.0° TCH 55'.

RWY 32: VASI(V4L)—GA 3.0° TCH 71'. Road. Rgt tfc.

RUNWAY DECLARED DISTANCE INFORMATION

RWY 14: TORA-5927 TODA-5927 ASDA-5927 LDA-5927

RWY 18L: TORA-8236 TODA-8236 ASDA-8236 LDA-8236

RWY 18R: TORA-8743 TODA-8743 ASDA-8743 LDA-8743

RWY 32: TORA-5927 TODA-5927 ASDA-5927 LDA-5927

RWY 36L: TORA-8743 TODA-8743 ASDA-8743 LDA-8623

RWY 36R: TORA-8236 TODA-8236 ASDA-8236 LDA-8236

ARRESTING GEAR/SYSTEM

RWY 18R: EMAS

SERVICE: S7 FUEL 100LL, JET A QX2, 4 LGT When ATCT clsd ACTVT MALSR Rwy 18R—CTAF. MIRL Rwy 14-32; HIRL
Rwys 18L-36R and Rwy 18R-36L preset med intst.

AIRPORT REMARKS: Attended continuously. Birds on and invof aprt. JP4 fuel avbl. Rwy 14-32 rstrd to acft less than 60000 lbs
DTW. Rwy 14-32 not avbl for Part 121 acft opns. Twy C clsd btn Rwy 18L-36R and Rwy 18R indefly. Federal Inspection
Station fee. Federal Inspection Station is lctd on the West General Aviation/Cargo apron. Lndg fee assessed for any "for
hire" acft.

AIRPORT MANAGER: 956-795-2000

WEATHER DATA SOURCES: AWOS-3PT (956) 712-8640 LAWRS SAWRS(WHEN ATCT CLSD).

COMMUNICATIONS: CTAF 120.1 ATIS 125.775 UNICOM 122.95

RCO 122.3 (SAN ANGELO RADIO)

Ⓡ HOUSTON CENTER APP/DEP CON 127.8

TOWER 120.1 (1200-0600Z±) GND CON 121.8

CLEARANCE DELIVERY PHONE: For CD if una to ctc on FSS freq, ctc Houston ARTCC at 281-230-5622.

AIRSPACE: CLASS D svc 1200-0600Z±, other times CLASS E.

RADIO AIDS TO NAVIGATION: NOTAM FILE LRD.

(VH) (H) VORTACW 117.4 LRD Chan 121 N27°28.72' W99°25.06' 320° 4.6 NM to fld. 583/9E.

VOR unusable:

080°-126° byd 40 NM

127°-137° byd 40 NM blo 4,500'

127°-137° byd 56 NM

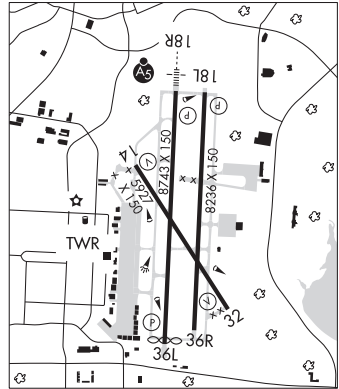
138°-148° byd 57 NM

190°-260° byd 40 NM

ILS/DME 111.9 I-LRD Chan 56 Rwy 18R. Class IE. Unmonitored when ATCT closed. Localizer backcourse

unusable byd 20° left of course. DME unusable byd 20° left of localizer backcourse. Localizer backcourse unusable byd
25° right of course.

COMM/NAV/WEATHER REMARKS: Emerg frequency 121.5 not avbl at twr.



BROWNSVILLE

H-7B, L-20G

IAP, AD