

**ST PETERSBURG—CLEARWATER**

**ST PETE—CLEARWATER INTL** (PIE)(KPIE) P (CG) 8 N UTC-5(-4DT) N27°54.52' W82°41.19'

MIAMI  
H-8H, L-21D, 24F  
IAP, AD

11 B LRA Class I, ARFF Index C NOTAM FILE PIE  
**RWY 18-36:** H9730X150 (ASPH-GRVD) S-75, D-195, 2S-175,  
 2D-320, 2D/2D2-700 PCN 74 F/A/W/T HIRL CL  
**RWY 18:** MALSR. TDZL. PAPI(P4L)—GA 3.0° TCH 68'. RVR-TMR  
 Brush.  
**RWY 36:** PAPI(P4L)—GA 3.0° TCH 76'. RVR-TMR Thld dsplcd 930'.  
 Tree.  
**RWY 04-22:** H6000X150 (ASPH-GRVD) S-80, D-130, 2S-165,  
 2D-235 PCN 32 F/B/X/T MIRL  
**RWY 04:** REIL. PAPI(P4L)—GA 3.0° TCH 57'. Trees.  
**RWY 22:** REIL. PAPI(P4L)—GA 3.0° TCH 45'. Road.

**LAND AND HOLD—SHORT OPERATIONS**

LDG RWY	HOLD—SHORT POINT	AVBL LDG DIST
RWY 18	04-22	7557
RWY 22	18-36	4514

**RUNWAY DECLARED DISTANCE INFORMATION**

<b>RWY 04:</b> TORA-6000 TODA-6000 ASDA-6000 LDA-6000
<b>RWY 18:</b> TORA-9730 TODA-9730 ASDA-9180 LDA-9180
<b>RWY 22:</b> TORA-6000 TODA-6000 ASDA-6000 LDA-6000
<b>RWY 36:</b> TORA-9730 TODA-9730 ASDA-9650 LDA-8720

**SERVICE:** S4 FUEL 100, JET A, A1+ OX 1, 2 LGT When ATCT clsd

ACTVT MALSR Rwy 18; TDZ Rwy 18; cntln Rwy 18-36; MIRL Rwy 04-22; HIRL Rwy 18-36; twy lgts—CTAF.

**MILITARY—JASU** 1(NC-5) FUEL A, A+ (C727-531-1441, avbl 1000-0300Z†, OT 15 min PN rqr.) J8-Avbl for SAR acct only. (Mil) (NC-100, A A+) OIL O-128.

**NOISE:** Noise sensitive area 5 mi N extgd 1 mi E & W of LOC SB to shoreline. Tbjt Indg Rwy 18 & dep Rwy 36 use publ noise abatement proc.

**AIRPORT REMARKS:** Attended continuously. Birds on and invof arpt. Lgts on hwy N of arpt may be mistaken for rwy lgts. Banner towing NA. Flight Notification Service (ADCUS) avbl.

**AIRPORT MANAGER:** 727-453-7800

**WEATHER DATA SOURCES:** ASOS 134.5 (727) 531-3456.

**COMMUNICATIONS:** CTAF 118.3 ATIS 134.5 UNICOM 122.95

**ST PETERSBURG RCO** 122.2 (SAINT PETERSBURG RADIO)

® TAMPA APP/DEP CON 125.3

**TOWER** 118.3 128.4 (1100-0400Z†) **GND CON** 121.9 **CLNC DEL** 120.6

**CLEARANCE DELIVERY PHONE:** For CD if una to ctc on FSS freq, ctc Tampa Apch at 813-878-2528.

**AIRSPACE:** CLASS D svc 1100-0400Z†; other times CLASS E.

**RADIO AIDS TO NAVIGATION:** NOTAM FILE PIE.

**ST PETERSBURG (H) (H) VORTACW** 116.4 PIE Chan 111 N27°54.47' W82°41.06' at fld. 5/5W.

VOR unusable:

025°-054° byd 21 NM blo 5,000'

233°-250° byd 20 NM

TACAN AZIMUTH unusable:

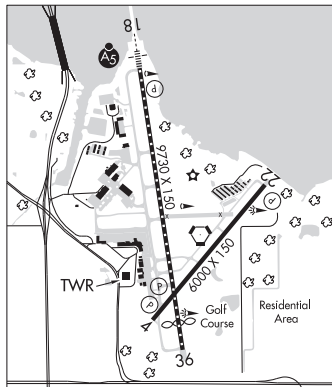
133°-146°

**CAPOK NDB (LOMW)** 360 PI N27°59.71' W82°42.23' 175° 5.3 NM to fld. 23/5W.

**ILS/DME** 109.1 I-PIE Chan 28 Rwy 18. Class OF IID. LOM CAPOK NDB. Unmonitored when ATCT clsd.

**ILS/DME** 108.7 I-CWT Chan 24 Rwy 36. Class IA. Unmonitored when ATCT clsd. LOC unusable byd 25° left of course.

**COMM/NAV/WEATHER REMARKS:** Emerg freq 121.5 not avbl at twr.



**ST PETERSBURG** N27°54.47' W82°41.06' NOTAM FILE PIE.

**(H) (H) VORTACW** 116.4 PIE Chan 111 at St Pete—Clearwater Intl. 5/5W.

MIAMI  
H-8H, L-21D, 24F

VOR unusable:

025°-054° byd 21 NM blo 5,000'

233°-250° byd 20 NM

TACAN AZIMUTH unusable:

133°-146°

**RCO** 122.2 (SAINT PETERSBURG RADIO)

**SANTA ROSA** N30°36.91' W86°56.24' NOTAM FILE GNV.

**(L) TACAN** 133.6 NGS Chan 63 323° 6.4 NM to Whiting Fld Nas South. 147/2W.

NEW ORLEANS  
L-21C, 22H