

**BLAKELY**

**EARLY CO** (BJJ)(KBIJ) 3 E UTC-5(-4DT) N31°23.85' W84°53.69'

**JACKSONVILLE**  
H-9A, 12F, L-221  
IAP

215 B TPA-1202(987) NOTAM FILE MCN

**RWY 05-23:** H5494X98 (ASPH) S-21 MIRL

**RWY 05:** PAPI(P2L)-GA 3.0° TCH 34'. Trees.

**RWY 23:** MALSF. PAPI(P2L)-GA 3.0° TCH 30'. Trees.

**SERVICE:** FUEL 100LL, JET A LGT ACTVT MALSF Rwy 23; PAPI Rwys 05 and 23; MIRL Rwy 05-23-CTAF.

**AIRPORT REMARKS:** Attended Mon-Fri 1300-2100Z.

**AIRPORT MANAGER:** 229-723-4304

**WEATHER DATA SOURCES:** AWOS-3PT 118.475 (229) 723-5511.

**COMMUNICATIONS:** CTAF 122.9

Ⓡ **CAIRNS APP/DEP CON** 125.4 (24 hrs Tue-Sat, 1200-0500Z† Sun-Mon. other times ctc)

Ⓡ **JAX CENTER APP/DEP CON** 134.3

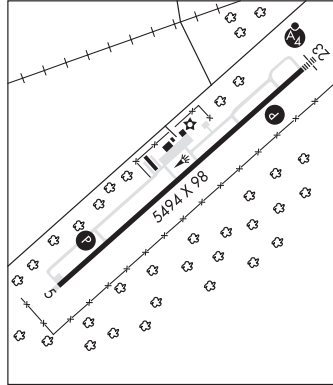
**CLEARANCE DELIVERY PHONE:** For CD ctc Jacksonville ARTCC at 904-845-1592.

**RADIO AIDS TO NAVIGATION:** NOTAM FILE ANB.

**WIREGRASS (L) (L) VORTACW** 111.6 RRS Chan 53 N31°17.08' W85°25.87' 074° 28.4 NM to fld. 345/2E.

VOR unusable:

- 326°-336° byd 15 NM blo 1,900'
- 326°-336° byd 20 NM blo 2,300'
- 326°-336° byd 30 NM blo 4,000'
- 337°-350° byd 13 NM blo 4,000'
- 337°-350° byd 20 NM blo 6,000'
- 337°-350° byd 30



**BRANTLEY CO** (See NAHUNTA on page 245)

**BRUNSWICK GOLDEN ISLES** (BQK)(KBQK) 5 N UTC-5(-4DT) N31°15.54' W81°27.98'

**JACKSONVILLE**  
H-9B, 12F, L-24H  
IAP, AD

26 B LRA ARFF Index-See Remarks NOTAM FILE BQK

**RWY 07-25:** H8001X150 (ASPH-GRVD) S-120, D-190, 2S-175, 2D-323 PCN 50 F/B/X/T HIRL

**RWY 07:** MALS. PAPI(P4L)-GA 3.0° TCH 58'.

**RWY 25:** REIL. PAPI(P4L)-GA 3.0° TCH 50'.

**SERVICE:** S4 FUEL 100LL, JET A LGT Actvt MALS. Rwy 07; REIL Rwy 25; PAPI Rwy 07 and 25; HIRL Rwy 07-25-CTAF.

**AIRPORT REMARKS:** Attended 1200-0100Z†. Deer on and in/ovf arpt. Birds on and in/ovf arpt dur heavy rains and high northeasterly winds. PPR for svc and fuel after hrs call 912-264-9200. Rwy 07-25 full strength shoulders each side. Class I, ARFF Index A. PPR 24 hrs for charter acft ops with more than 30 passenger seats call amgr 912-265-2070. Use caution due to congested airspace with turbine, non-turbine and training acft. KSSI located 7 NM SE. All VFR acft adhere to std left hand tfc pat. All arrivals and dep, including acft flying inst approaches, are requested to report 10 miles from the arpt, intrs and psn reports to "Brunswick" CTAF 123.0. Additional arpt safety bulletins posted on arpt website. Flight Notification Service (ADCUS) avbl.

**AIRPORT MANAGER:** 912-265-2070

**WEATHER DATA SOURCES:** AWOS-3 124.175 (912) 261-0531.

**COMMUNICATIONS:** CTAF/UNICOM 123.0

RCO 122.2 (MACON RADIO)

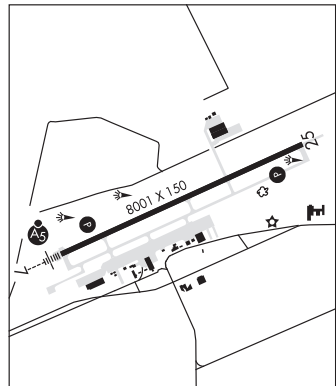
Ⓡ **JAX CENTER APP/DEP CON** 126.75 **CLNC DEL** 126.75

**CLEARANCE DELIVERY PHONE:** For CD ctc Jacksonville ARTCC at 904-845-1592.

**AIRSPACE:** CLASS E.

**RADIO AIDS TO NAVIGATION:** NOTAM FILE SSI.

(L) (L) **VORTACW** 109.8 SSI Chan 35 N31°03.03' W81°26.76' 359° 12.5 NM to fld. 6/4W.  
ILS 108.5 I-BQK Rwy 07. Class IE.



**BRUNSWICK** N31°03.03' W81°26.76' NOTAM FILE SSI.

**JACKSONVILLE**

(L) (L) **VORTACW** 109.8 SSI Chan 35 037° 1.7 NM to Jekyll Island. 6/4W.

RCO 122.2 (MACON RADIO)