

NASHVILLE INTL (BNA)(KBNA) P (ANG) 5 SE UTC-6(-5DT) N36°07.47' W86°40.69'

ATLANTA

599 B LRA Class I, ARFF Index D NOTAM FILE BNA

H-6K, 9A, L-16J

RWY 13-31: H11030X150 (CONC-GRVD) S-75, D-175, 2D-250,

IAP, AD

2D/2D2-875 PCN 70 R/C/W/T HIRL

RWY 13: REIL. Thld dsplcd 800'. Trees. 0.7% up.

RWY 31: REIL. PAPI(P4R)—GA 3.0° TCH 51'. Thld dsplcd 741'. Tree.

RWY 02C-20C: H8001X150 (CONC-GRVD) S-75, D-209, 2D-350

PCN 52 R/B/W/T HIRL

RWY 02C: MALSR. RVR-T 0.5% up.

RWY 20C: REIL. PAPI(P4L)—GA 3.0° TCH 68'. RVR-R 0.4% up.

RWY 02R-20L: H8001X150 (CONC-GRVD) S-75, D-209, 2D-350

PCN 59 R/B/W/T HIRL CL

RWY 02R: ALSF2. TDZL. RVR-TMR 0.7% down.

RWY 20L: MALSR. RVR-TMR 0.3% up.

RWY 02L-20R: H7704X150 (CONC-GRVD) S-100, D-200, 2D-390,

2D/2D2-850 PCN 71 R/B/W/T HIRL CL 0.6% up S

RWY 02L: ALSF2. TDZL. PAPI(P4R)—GA 3.0° TCH 55'. RVR-TR

RWY 20R: MALSF. PAPI(P4R)—GA 3.0° TCH 79'. RVR-TR

RUNWAY DECLARED DISTANCE INFORMATION

RWY 02C:TORA-8001 TODA-8001 ASDA-7601 LDA-7601

RWY 02L:TORA-7702 TODA-7702 ASDA-7702 LDA-7702

RWY 02R:TORA-8000 TODA-8000 ASDA-8000 LDA-8000

RWY 13: TORA-10288 TODA-11029 ASDA-10288 LDA-9487

RWY 20C:TORA-8001 TODA-8001 ASDA-8001 LDA-8001

RWY 20L:TORA-8000 TODA-8000 ASDA-8000 LDA-8000

RWY 20R:TORA-7702 TODA-7702 ASDA-7702 LDA-7702

RWY 31: TORA-10228 TODA-11029 ASDA-10228 LDA-9487

SERVICE: S4 FUEL 100LL, JET A QX2, 4 MILITARY—FUEL 100LL, A

NOISE: Tbjt rwy noise abatement proc; Mil tbjt use Rwy 13-31 for arr & dep. NOTE: See Special Notices—Nashville Intl Airport (BNA) Noise Abatement Procedures.

AIRPORT REMARKS: Attended continuously. Bird act on and invof arpt. Do not confuse Twy S for Rwy 20C. 180° turns ovr 12500 lbs NA on asph sfc. Mil and acft more than 12500 lb prac apch NA; Prac apch btn 0500-1300Z± NA. Flt over main trml bldg NA. Rwy 13 Lgtd jet blast fence 568' MSL 1167' NW thr. Rwy 31 lgted jet blast fence 598' MSL 1100' SE thr. Trml apron tax btn ACR pushback ops and gates NA. Adhere to twy and btl cntrln wi trml apron. Trml apron Txl Z, Txl Y1, Txl Y2 and Txl Y btn Txl Y3 and Y4 clsd to acft wingspan more than 118'. CAUTION: Read back and compliance of rwy hldg instrn rqr, spcly Twy K and Rwy 20C, Twy L at Rwy 13 and Twy H at Rwy 31. Rwy 02L-20R, 02C-20C, 02R-20L, 13-31 ctl mrkgs and lead off/on mrkgs in TDZ obsc due to rubber build-up. Pavement on W side of Rwy 02R-20L between Txy H3 and Txy H4 mkd as a vehicle aces road only. Flight Notification Service (ADCUS) avbl. ANG PPR—Music City ops 615-367-5579.

AIRPORT MANAGER: 615-275-1825

WEATHER DATA SOURCES: ASOS (615) 360-6133 LLWAS. TDWR.

COMMUNICATIONS: D-ATIS 135.1 UNICOM 122.95

TOWER 118.6 **GND CON** 121.9 **CLNC DEL** 126.05

Ⓡ **APP CON** 118.4 (East)

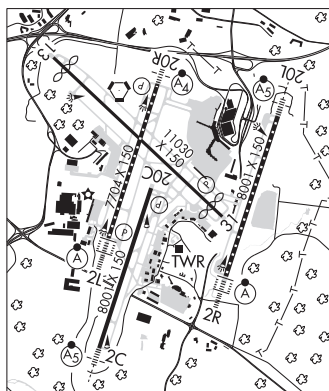
Ⓡ **DEP CON** 118.4 (East) 119.35 (West)

CPDLC (LOGON KUSA)

PDC

AIRSPACE: CLASS C svc ctc **APP CON**.

VOR TEST FACILITY (VOT) 108.6



CONTINUED ON NEXT PAGE

CONTINUED FROM PRECEDING PAGE

RADIO AIDS TO NAVIGATION: NOTAM FILE BNA.

(VH) (H) VORTACW 114.1 BNA Chan 88 N36°08.22' W86°41.09' at fld. 566/2W.

TACAN AZIMUTH unusable:

062°-069° blo 6,000'

DME unusable:

062°-069° blo 6,000'

VOR unusable:

062°-069° blo 6,000'

063°-070° byd 40 NM

163°-165° byd 40 NM

181°-191° byd 40 NM blo 18,000'

192°-239° byd 40 NM

ILS 110.75 I-EZN Rwy 02C. Class IE.

ILS/DME 109.9 I-BNA Chan 36 Rwy 02L. Class IIIE.

ILS/DME 111.75 I-UQU Chan 54(Y) Rwy 02R. Class IIIE. LOC unusable byd 20° right of course.

ILS/DME 109.35 I-SSX Chan 30(Y) Rwy 20L. Class IE.

ILS 111.3 I-VIY Rwy 20R. Class IB. LOC unusable byd 25° left and right of course.

ILS 111.95 I-PNO Rwy 31. Class IB.

COMM/NAV/WEATHER REMARKS: Trml ramp and non-movmt area unctld; bfr use—122.95. Trml ramp, N trml ramp and non-movmt area unctld, bfr use—122.95. Trml ramp ops Trml B Gate B6, B8, B10, Trml C Gate C13-C15 and Trml T Gate T1-T6 PPR bfr ramp entry or pushback 1100-0500Z†—131.375. Trml ramp ops Trml D Gate D1-D6 and Trml C Gate C1-C11 and C16-C27 PPR bfr ramp entry or pushback 1100-0500Z†—129.95.

NEW TAZEVELL MUNI (See TAZEVELL on page 465)

OBION N36°17.86' W88°59.69' NOTAM FILE MKL.

ST LOUIS

NDB (MHW/LOM) 212 UC 005° 4.9 NM to Everett-Stewart Rgnl. 310/OE. NDB unmonitored.

L-16H

ONEIDA

SCOTT MUNI (SCX)(KSCX) 4 SW UTC-5(-4DT) N36°27.34' W84°35.15'

CINCINNATI

1545 B NOTAM FILE BNA

H-9A, L-25A

RWY 05-23: H5505X75 (ASPH) S-28, D-40 PCN 7 F/C/X/T MIRL

IAP

0.4% up SW

RWY 05: REIL. PAPI(P4L)—GA 3.5° TCH 44'. Trees.

RWY 23: ODALS. REIL. PAPI(P4L)—GA 3.0° TCH 42'. Trees.

SERVICE: S4 FUEL 100LL, JET A+ OX 1, 4 LGT Actvt ODALS Rwy 23;

REIL Rwy 05 & 23; MIRL Rwy 05-23—CTAF. MIRL Rwy 05-23

preset low intst; incr intst—CTAF. PAPI Rwy 05 & 23 opr consly.

AIRPORT REMARKS: Attended Mon-Sat 1300-2300Z†, Sun 1730-2300Z†.

Aft hr—423-223-4331. Unatndd Thanksgiving & Christmas. Wildlife

on and invof arpt. Fuel 24 hr credit card svc avbl.

AIRPORT MANAGER: 423-569-8270

WEATHER DATA SOURCES: AWOS-3 135.025 (423) 569-6651.

COMMUNICATIONS: CTAF/UNICOM 122.8

Ⓡ INDIANAPOLIS CENTER APP/DEP CON 124.625

CLEARANCE DELIVERY PHONE: For CD ctc Indianapolis ARTCC at

317-247-2411.

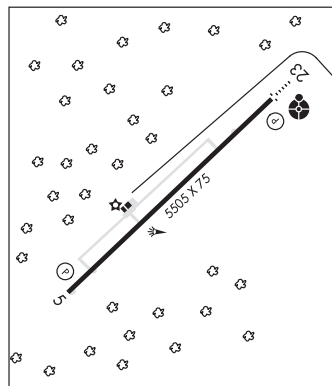
RADIO AIDS TO NAVIGATION: NOTAM FILE BNA.

LIVINGSTON (VL) (L) VOR/DME 114.35 LVT Chan 90(Y)

N36°35.07' W85°10.00' 107° 29.1 NM to fld. 1020/2W.

DME unusable:

034°-056° byd 35 NM



OUTLAW FLD (See CLARKSVILLE on page 427)