

NAPA CO (APC)(KAPC) 5 S UTC-8(-7DT) N38°12.79' W122°16.84'

SAN FRANCISCO
H-3B, L-2F, 3A, A
IAP, AD

36 B NOTAM FILE APC MON Airport
RWY 01L-19R: H5930X150 (ASPH-GRVD) S-102, D-134, 2D-120
PCN 41 F/D/X/T MIRL 0.3% up N
RWY 01L: MALS.

RWY 19R: PAPI(P4L)—GA 3.25° TCH 52'. Rgt tfc.
RWY 06-24: H5008X150 (CONC) S-60, D-76, 2D-120
PCN 21 R/C/W/T MIRL 0.4% up NE
RWY 06: REIL.

RWY 01R-19L: H2510X75 (ASPH) S-13.5 PCN 5 F/D/X/T 0.4% up N
RWY 01R: Rgt tfc.

LAND AND HOLD—SHORT OPERATIONS

LDG RWY	HOLD—SHORT POINT	AVBL LDG DIST
RWY 24	01L-19R	3700

SERVICE: S4 FUEL 100LL, JET A OX 3, 4 LGT When twr clsd
ACTIVATE MALS Rwy 01L; REIL Rwy 06, MIRL Rwy 01L-19R and
Rwy 06-24—CTAF. PAPI Rwy 19R opr continuously.

AIRPORT REMARKS: Attended 1500-0400Z†. For fuel svc 0500-1400Z†
call 707-224-0887. Unigt bridge 1 NM S, 167' AGL. Asph apron
strength 12,500-30,000 lbs gross weight single wheel. Due to arpt
proximity to wetlands birds on and invof the arpt year around with
highest concentration of activity of birds on the rwys during rainy
weather. Landing fee. Ldg fee chrgd to all air taxi, coml acft ops (exc flt instruction), and trans acft weighing more than
12500 lbs.

AIRPORT MANAGER: 707-253-4300

WEATHER DATA SOURCES: ASOS (707) 252-7916

COMMUNICATIONS: CTAF 118.7 ATIS 124.05 707-255-2847 UNICOM 122.95

® **OAKLAND CENTER APP/DEP CON** 127.8 353.5

TOWER 118.7 (1500-0400Z†) **GND CON** 121.7 **CLNC DEL** 127.85

CLEARANCE DELIVERY PHONE: For CD when ATCT clsd ctc Oakland ARTCC at 510-745-3380.

AIRSPACE: CLASS D svc 1500-0400Z†; other times CLASS G.

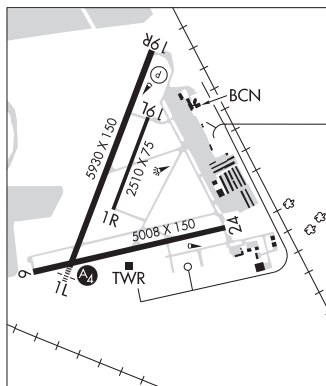
RADIO AIDS TO NAVIGATION: NOTAM FILE APC.

SCAGGS ISLAND (VL) (H) VORTACW 112.1 SGD Chan 58 N38°10.76' W122°22.39' 048° 4.8 NM to fld. 5/17E.

VOR unusable:

- 064°-068° byd 40 NM
- 082°-087° byd 40 NM
- 098°-112° byd 40 NM blo 8,000'
- 098°-112° byd 74 NM
- 190°-239° byd 40 NM
- 244°-257° byd 40 NM
- 285°-303° byd 40 NM
- 310°-331° byd 40 NM
- 336°-045° byd 40 NM

ILS/DME 111.3 I-APC Chan 50 Rwy 01L. Class IE. LOC unmonitored when ATCT clsd. Glideslope unusable byd
4° left and 7° right of course. Autopilot coupled apchs not applicable blw 530' MSL (1.3 NM from thld).



NAVAL BASE VENTURA CO (See POINT MUGU NAS (NAVAL BASE VENTURA CO) on page 239)