

SHEEP MOUNTAIN (SMU)(PASP) 0 W UTC-9(-8DT) N61°48.68' W147°30.54'

ANCHORAGE

2750 NOTAM FILE ENA

RWY 05-23: 2270X60 (GRVL-DIRT) 1.0% up SW

RWY 05: Trees.

RWY 23: Road.

AIRPORT REMARKS: Unattended. Rwy condition not monitored, recommend visual inspection prior to using. Due to rwy conditions, recommend that rwy only be used in an emergency situation. No state maintenance performed on rwy. Rwy subject to turbulent winds. Vehicles may be on rwy. Rwy 05-23 overgrown with 3' weeds and brush. Rwy slopes crosswise north to south at up to 9%. Rwy 23 slopes uphill at 1% gradient. Rwy 05-23 large loose rocks on rwy, all terrain vehicle trail along both sides of rwy. Wind sock is damaged and may be unreliable. Wind sock and segmented circle and not co-located.

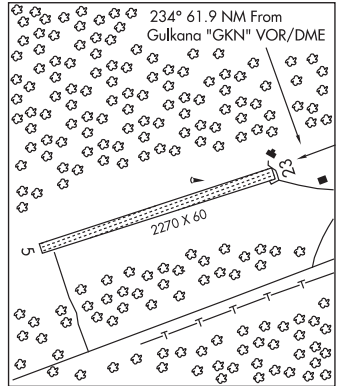
AIRPORT MANAGER: 745-5116

COMMUNICATIONS: CTAF 122.9

RADIO AIDS TO NAVIGATION: NOTAM FILE GKN.

GULKANA (H) (H) VOR/DME 115.6 GKN Chan 103 N62°09.23' W145°26.84' 234° 61.9 NM to fld. 1549/17E.

COMM/NAV/WEATHER REMARKS: For a toll free call to Kenai FSS dial 1-866-864-1737.



SHEMYA N52°43.32' E174°03.62' NOTAM FILE SYA.

WESTERN ALEUTIAN IS.

NDB (HW) 403 SYA 60/3E. SHUTDOWN.

H-2H, L-2H

SHISHMAREF (SHH)(PASH) 1 S UTC-9(-8DT) N66°14.98' W166°05.36'

NOME

14 B NOTAM FILE SHH

H-1A, L-4H

RWY 05-23: H4997X73 (ASPH) S-12.5 MIRL

IAP

RWY 05: VASI(V4L)—GA 3.0° TCH 25'.

RWY 23: VASI(V4L)—GA 3.0° TCH 25'. Antenna.

SERVICE: LGT ACTVT MIRL Rwy 05-23—CTAF. VASI Rwy 05 and 23; on consly.

AIRPORT REMARKS: Unattended. Rwy cond unmt; rcmd visual insp prior to Indg. NW-SE pvlg winds. Hvy acft sink in ramp blacktop on hot days. Max acft wgt; no lmt when frozen. Birds on and invof arpt 1 May-31 Oct. Rwy 05 markings faded. Rwy 23 markings faded.

AIRPORT MANAGER: 907-443-2500

WEATHER DATA SOURCES: AWOS-3P 121.1 (907) 649-4011. (WX CAM)

COMMUNICATIONS: CTAF 123.0

SHISHMAREF RCO 122.4 (NOME RADIO)

ANCHORAGE CENTER APP/DEP CON 119.2 263.0

RADIO AIDS TO NAVIGATION: NOTAM FILE SHH.

NDB (HW) 365 SHH N66°15.49'

W166°03.14' 229° 1.0 NM to fld. 14/11E.

NDB unusable:

060°-090° byd 30 NM blo 6,000'

COMM/NAV/WEATHER REMARKS: For a toll free call to Nome FSS dial

1-800-478-8400. For a toll free call to Fairbanks FSS dial 1-866-248-6516.

