

**CHIGNIK LAKE** (A79) 0 WSW UTC-9(-8DT) N56°15.33' W158°46.67'

**COLD BAY**

50 NOTAM FILE ENA

**RWY 08-26:** 2800X60 (GRVL) 0.3% up E

**RWY 08:** Brush.

**RWY 26:** Brush.

**AIRPORT REMARKS:** Unattended. Rwy condition not monitored, recommend visual inspection prior to use. Rwy safety areas rough, rutted, and uneven. Rwy slopes down toward the west. Hill South of Rwy 08-26 150' high, runs parallel to rwy. Rwy 08-26 rutted and uneven sfc with no crown, entire length, loose rocks up to 4" on sfc. Rwy 08-26 brush up to 15' along entire rwy length.

**AIRPORT MANAGER:** 907-246-3325

**COMMUNICATIONS:** CTAF 122.8

**RADIO AIDS TO NAVIGATION:** NOTAM FILE PTH.

**PORT HEIDEN NDB/DME (HW)** 371 PDN Chan 32 N56°57.26'

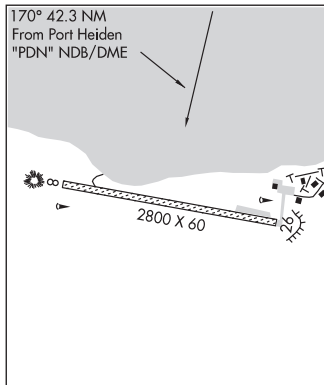
W158°38.85' 170° 42.2 NM to fld. 56/16E.

DME unusable:

050°-110° byd 32 NM blo 6,500'

**COMM/NAV/WEATHER REMARKS:** For a toll free call to Kenai FSS dial

1-866-864-1737.



**CHINOOK** N58°44.23' W156°46.70' NOTAM FILE AKN.

**KODIAK**

**NDB (HW)** 355 AUB 121° 5.5 NM to King Salmon. 66/11E.

H-1B, 2J, L-2I, 3C

**CHISANA** (CZN) 0 N UTC-9(-8DT) N62°04.31' W142°02.96'

**ANCHORAGE**

3348 NOTAM FILE ORT

L-1A, 3E

**RWY 12-30:** 3000X50 (TURF-GRVL) 2.5% up SE

**RWY 12:** Trees.

**RWY 30:** Trees.

**AIRPORT REMARKS:** Unattended. Wildlife invof rwy. Rwy condition unmtnt; rcmdnd visual insp prior to Indg. Vehicle trail on W side of rwy. Skis only winter. Alert: two pvt airstrips perpendicular to Rwy 12 and Rwy 30 apch. Rwy 12-30 surface has 24" in brush, 5" in loose rock, ruts and depressions. Rwy 12 and 30 thr and edge cones. Windssock psbly unreliable due to trees.

**AIRPORT MANAGER:** 907-822-3222

**COMMUNICATIONS:** CTAF 122.9

**RADIO AIDS TO NAVIGATION:** NOTAM FILE ORT.

**NORTHWAY (H) (H) VORTACW** 116.3 ORT Chan 110 N62°56.83'

W141°54.76' 167° 52.8 NM to fld. 1779/17E.

TACAN AZIMUTH unusable:

335°-030° byd 30 NM blo 10,500'

DME unusable:

335°-030° byd 30 NM blo 10,500'

**COMM/NAV/WEATHER REMARKS:** Northway FSS toll free number

1-800-478-6611. For a toll free call to Fairbanks FSS dial

1-866-248-6516.

