

**CHUATHBALUK** (9A3)(PACH) 1 NE UTC-9(-8DT) N61°34.74' W159°12.94'  
244 B NOTAM FILE ENA

MC GRATH  
L-3C  
IAP

**RWY 09-27:** 3401X60 (GRVL-DIRT) MIRL

**RWY 09:** REIL. PAPI(P4L)—GA 3.0° TCH 26'. Berm.

**RWY 27:** REIL. PAPI(P4L)—GA 4.0° TCH 25'. Brush.

**SERVICE:** LGT ACTVT REIL Rwy 09 and Rwy 27, PAPI Rwy 09 and Rwy 27, MIRL Rwy 09-27—CTAF. ACTVT rotg bcn—CTAF.

**AIRPORT REMARKS:** Unattended. Rwy cond not montrd rcmd visual inspnr prior to use. Cold temperature airport. Altitude correction required at or below -32C. Rwy 09-27 frost heaves and sink holes at end of rwy and ramp.

**AIRPORT MANAGER:** 907-764-5094

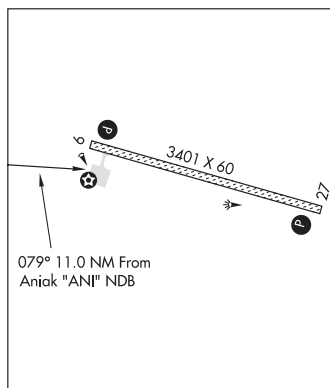
**COMMUNICATIONS:** CTAF 122.9

Ⓡ **ANCHORAGE CENTER APP/DEP CON** 118.15

**RADIO AIDS TO NAVIGATION:** NOTAM FILE ANI.

**ANIAK NDB (HW)** 359 ANI N61°35.41'

W159°35.87' 079° 11.0 NM to fld. 88/14E.



## CHUGIAK

**HILLTOP** (AK24) PVT 3 N UTC-9(-8DT) N61°25.07' W149°26.37'  
420 NOTAM FILE Not insp.

ANCHORAGE

**RWY 03-21:** 1400X22 (GRVL)

**RWY 03:** Trees.

**RWY 21:** Trees.

**AIRPORT REMARKS:** Unattended. Prior approval required before ldg—ctc owner. Rwy 03-21 narrow with bldgs, trees and activity close to the rwy. Rwy not plowed in winter. Visually inspect prior to lndg. Land at your own risk. STOL acct only.

**AIRPORT MANAGER:** 907-244-7820

**COMMUNICATIONS:** CTAF/UNICOM 123.0

**COMM/NAV/WEATHER REMARKS:** For a toll free call to Kenai FSS dial 1-866-864-1737.

**CIRCLE CITY** (CRC)(PACR) 0 W UTC-9(-8DT) N65°49.68' W144°04.57'  
613 B NOTAM FILE FAI

DAWSON

**RWY 15-33:** 2979X60 (GRVL-DIRT) MIRL

**RWY 15:** Brush.

**RWY 33:** Brush.

**SERVICE:** FUEL 100LL LGT ACTIVATE beacon—CTAF. ACTIVATE MIRL Rwy 15-33—CTAF.

**AIRPORT REMARKS:** Unattended. Rwy not maintained and condition not monitored, recommend visual inspection prior to landing. 100LL avbl off arpt at store in town. Taxi via arpt access road. Snow removal ops dur winter—monitor CTAF. Rwy 15-33 thlds marked with reflective panels. Segmented circle overgrown.

**AIRPORT MANAGER:** (907) 451-5280

**COMMUNICATIONS:** CTAF 122.9

**SUAIS** 125.3 126.3 (1-800-758-8723).

**RADIO AIDS TO NAVIGATION:** NOTAM FILE FYU.

**FORT YUKON (H) (H) VORTACW** 114.4 FYU Chan 91 N66°34.46'

W145°16.60' 126° 53.6 NM to fld. 449/20E.

VOR unusable:

001°-360° byd 15 NM

249°-259° byd 10 NM blo 4,900'

TACAN AZIMUTH unusable:

280°-300° byd 35 NM blo 2,500'

DME unusable:

280°-300° byd 35 NM blo 2,500'

**COMM/NAV/WEATHER REMARKS:** For a toll free call to Fairbanks FSS dial 1-866-864-1737.

