

MUNCIE

DELAWARE CO RGNL (MIE)(KMIE) 3 NW UTC-5(-4DT) N40°14.55' W85°23.75'

CHICAGO

937 B ARFF Index—See Remarks NOTAM FILE MIE

H-5E, 10F, L-27E

RWY 14-32: H6500X150 (ASPH-GRVD) S-91, D-125, 2S-127,

IAP, AD

2D-215 PCN 36 F/C/W/T HIRL

RWY 14: REIL. PAPI(P4L)—GA 3.0° TCH 49'. Trees.

RWY 32: MALSR. Trees.

RWY 03-21: H5198X100 (ASPH-GRVD) S-80, D-100, 2S-127,

2D-125 PCN 32 F/C/X/T MIRL

RWY 03: REIL. PAPI(P4L)—GA 3.0° TCH 39'. Tree.

RWY 21: REIL. PAPI(P4L)—GA 3.0° TCH 45'. Tree.

LAND AND HOLD—SHORT OPERATIONS

LDG RWY	HOLD—SHORT POINT	AVBL LDG DIST
RWY 14	03-21	4300
RWY 21	14-32	3500

RUNWAY DECLARED DISTANCE INFORMATION

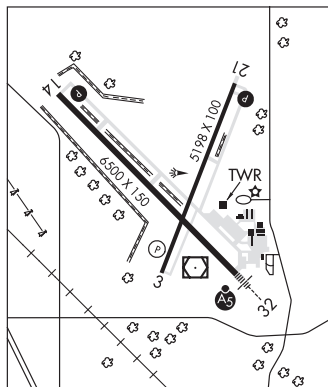
RWY 03: TORA-5197 TODA-5197 ASDA-5197 LDA-5197

RWY 14: TORA-6500 TODA-6500 ASDA-6500 LDA-6500

RWY 21: TORA-5197 TODA-5197 ASDA-5197 LDA-5197

RWY 32: TORA-6500 TODA-6500 ASDA-6500 LDA-6500

SERVICE: S2 FUEL 100LL, JET A OX 1, 3 LGT Actvt MALSR Rwy 32;
REIL Rwy 03, 14, & 21; PAPI Rwy 14 & 21; MIRL Rwy 03-21; HIRL
Rwy 14-32—CTAF. REIL Rwy 03, 14, & 21 high insty only. PAP Rwy
03 on consly.



AIRPORT REMARKS: Attended 1100-0300Z†. Parachute Jumping. Deer on and invof arpt. Svc aft hrs—(765)-729-1078.

Surface conditions not monitored 2000-1200Z† M-F and weekend. Rwy 14-32 is calm wind rwy. Rwy 03-21 unsked acr ops with at least 31 pax seats not authorized. Class IV, ARFF Index A. Closed to scheduled acr ops greater than 9 passenger seats. 96 hrs for unsked acr ops with more than 30 psgr seats call amgr 765-747-5690.

AIRPORT MANAGER: 765-747-5690

WEATHER DATA SOURCES: ASOS 114.4 MIE (765) 288-9617. LAWRS.

COMMUNICATIONS: CTAF 120.1 ATIS 133.25 UNICOM 122.95

Ⓡ INDIANAPOLIS APP/DEP CON 120.65

MUNCIE TOWER 120.1 (1100-0300Z†) **GND CON** 121.9

CLEARANCE DELIVERY PHONE: When ATCT is clsd for CD ctc Indianapolis Apch at 317-227-5743.

AIRSPACE: CLASS D svc 1100-0300Z†; other times CLASS G.

RADIO AIDS TO NAVIGATION: NOTAM FILE MIE.

MUNCIE (L) (L) VOR/DME 114.4 MIE Chan 91 N40°14.24' W85°23.64' at fld. 934/3W. ASOS

DME unusable:

280°-300° byd 10 NM blo 5,000'

VOR unusable:

280°-300° byd 10 NM blo 5,000'

BALLL NDB (LOMW) 365 JN N40°10.86' W85°19.26' 320° 5.0 NM to fld. 979/3W.

ILS 109.1 I-JNK Rwy 32. Class IE. LOM BALLL NDB. Unmonitored when ATCT clsd.

REESE (712) 3 SE UTC-5(-4DT) N40°09.31' W85°19.14'

CHICAGO

991 TPA—1791(800) NOTAM FILE HUF

RWY 09-27: H2800X50 (ASPH)

RWY 09: Thld dspclcd 160'. Trees.

RWY 27: Road.

SERVICE: FUEL 100LL, UL94

AIRPORT REMARKS: Attended 1300Z†-dusk. UAS/model aircraft 1/2 mile north of airport. Rwy 27 cntrln mrkg faded E end of rwy.

AIRPORT MANAGER: (765) 749-7357

COMMUNICATIONS: CTAF/UNICOM 122.7

CLEARANCE DELIVERY PHONE: For CD ctc Indianapolis Apch at 317-227-5743.

MUNCIE N40°14.24' W85°23.64' NOTAM FILE MIE.

CHICAGO

(L) (L) VOR/DME 114.4 MIE Chan 91 at Delaware Co Rgnl. 934/3W.

L-27E

DME unusable:

280°-300° byd 10 NM blo 5,000'

VOR unusable:

280°-300° byd 10 NM blo 5,000'

ASOS 114.4 MIE N40°14.55' W85°23.75'. (765) 288-9617.