

**CLEVELAND—HOPKINS INTL** (CLE)(KCLE) 9 SW UTC-5(-4DT) N41°24.56' W81°51.28'

800 B AOE Class I, ARFF Index C NOTAM FILE CLE

**RWY 06R-24L:** H9953X150 (CONC-GRVD) S-100, D-185, 2S-175, 2D-340 PCN 63 R/B/W/T HIRL CL

**RWY 06R:** MALS. TDZL. PAPI(P4L)—GA 3.0° TCH 73'. RVR-TMR Thld dspcd 1923'. Trees.

**RWY 24L:** MALS. TDZL. PAPI(P4R)—GA 3.0° TCH 48'. RVR-TMR

**RWY 06L-24R:** H9000X150 (CONC-GRVD) S-75, D-200, 2S-175, 2D-400 PCN 78 R/B/W/T HIRL CL

**RWY 06L:** ALSF2. TDZL. PAPI(P4L)—GA 3.0° TCH 69'. RVR-TMR Trees.

**RWY 24R:** ALSF2. TDZL. PAPI(P4R)—GA 3.0° TCH 65'. RVR-TMR

**RWY 10-28:** H6018X150 (ASPH-CONC-GRVD) S-155, D-200, 2S-175, 2D-400 PCN 80 R/B/W/T HIRL 0.5% up E

**RWY 10:** REIL. PAPI(P4L)—GA 3.0° TCH 45'. RVR-R Tree.

**RWY 28:** MALS. PAPI(P4R)—GA 3.0° TCH 45'. RVR-T Pole.

**RUNWAY DECLARED DISTANCE INFORMATION**

**RWY 06L:**TORA-9000 TODA-9000 ASDA-9000 LDA-9000

**RWY 06R:**TORA-9956 TODA-9956 ASDA-9956 LDA-8029

**RWY 10:** TORA-6018 TODA-6018 ASDA-6018 LDA-6018

**RWY 24L:**TORA-9956 TODA-9956 ASDA-9956 LDA-9956

**RWY 24R:**TORA-9000 TODA-9000 ASDA-9000 LDA-9000

**RWY 28:** TORA-6018 TODA-6018 ASDA-6018 LDA-6018

**ARRESTING GEAR/SYSTEM**

**RWY 10:** EMAS

**RWY 28:** EMAS

**SERVICE:** S4 FUEL 100LL, JET A1+ OX 1, 2, 3, 4 LGT PAPI unusbl byd 8° L&R of cntrl.

**NOISE:** All apchs are ovr noise sensitive areas. Arpt late ngt noise abatement procedures are in effect 0400-1100Z.

Additional noise abatement procedures are in effect call amgr normal business hrs at 216-265-6090.

**AIRPORT REMARKS:** Attended continuously. Deer, coyotes, & birds inclg waterfowl on & invof arpt. ASSC in use. Operate transponders with altitude reporting mode and ADS-B (if equipped) enabled on all airport surfaces. Twys clsd Oct-Apr to support deicing ops: Twy M; Twy J2; Twy M1 btn Twy L & Twy J1; Twy M2 btn Twy L & Twy J1. Txl H clsd to acft with wingspan ovr 171 ft. Pad 2 and Taxilane Y1 rstd to Group II acft, less than 79' wingspan. Ramp area concourse D between gates D1, D28 clsd except acft wingspan less than 86'. Pad 3 bays 1-5 clsd to acft with wingspan over 134'. Pad 3 bay 6 clsd to acft with wingspan over 94'. Twy F clsd to acft with wingspan over 118'. NASA Glenn Research Center; NASA ramp PPR call 216-433-2031; Mon-Fri 1300-2230Z. Contact NASA ops on freq 122.925 within 50 NM. Ldg Fee. ADCUS avbl dly 1200-0000Z, ltd avblty durg off hrs; all reqs for svc must be made with US Cust Svc ofc lctd at gate A-14 call 216-267-3600 durg listed hrs.

**AIRPORT MANAGER:** 216-265-6963

**WEATHER DATA SOURCES:** ASOS (216) 416-2729 TDWR.

**COMMUNICATIONS:** D-ATIS ARR 127.85 D-ATIS DEP 132.375 UNICOM 122.95

RCO 122.3 (CLEVELAND RADIO)

Ⓡ APP CON 126.55

Ⓡ DEP CON 128.25 135.875

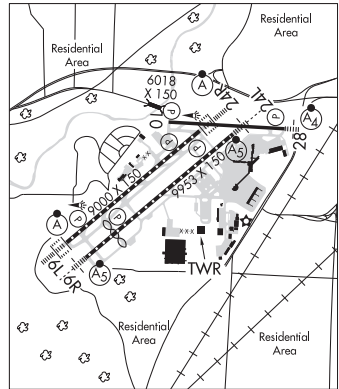
TOWER 124.5

GND CON 121.7 CLNC DEL 125.05

CPDLC (LOGON KUSA)

PDC

**AIRSPACE:** CLASS B See VFR Terminal Area Chart.



**DETROIT**  
H-10G, L-30G  
IAP, AD

CONTINUED ON NEXT PAGE

## CONTINUED FROM PRECEDING PAGE

VOR TEST FACILITY (VOT) 110.4

RADIO AIDS TO NAVIGATION: NOTAM FILE CLE.

DRYER (VH) (DH) VOR/DME 113.6 DJB Chan 83 N41°21.48' W82°09.72' 082° 14.2 NM to fld. 780/5W.

VOR unusable:

001°-010° byd 40 NM  
 020°-024° byd 40 NM  
 034°-040° byd 40 NM  
 080°-095° byd 40 NM  
 110°-120° byd 40 NM  
 135°-145° byd 40 NM  
 135°-150°  
 155°-165°  
 160°-165° byd 40 NM  
 185°-195° byd 40 NM  
 187°-197°  
 210°-224° byd 40 NM  
 211°-218°  
 225°-235° byd 40 NM blo 11,000'  
 225°-235° byd 95 NM  
 225°-245° byd 20 NM blo 3,500'  
 245°-265° byd 40 NM  
 275°-285° byd 40 NM blo 18,000'  
 286°-355° byd 40 NM

DME unusable:

187°-197°  
 289°-310°  
 322°-332°  
 350°-060°

ILS/DME 111.55 I-LIZ Chan 52(Y) Rwy 06L. Class IIIE.

ILS/DME 111.9 I-CLE Chan 56 Rwy 06R. Class IIE.

ILS/DME 109.9 I-HPI Chan 36 Rwy 24L. Class IIE. LOC unusable byd 20° left of course.

ILS/DME 111.55 I-PVY Chan 52(Y) Rwy 24R. Class IIIE.

ILS/DME 110.7 I-PXP Chan 44 Rwy 28. Class IE.

COMM/NAV/WEATHER REMARKS: Freq 121.5 not avbl at FSS.

**CUYAHOGA CO** (CGF)(KCGF) 10 E UTC-5(-4DT) N41°33.88' W81°29.23'

876 B NOTAM FILE CGF

RWY 06-24: H5502X100 (ASPH-GRVD) S-90, D-123, 2D-213

PCN 35 F/C/X/U HIRL

RWY 06: REIL. PAPI(P4L)—GA 3.0° TCH 45'. Thld dsplcd 318'. Tree.

RWY 24: MALSR. PAPI(P4L)—GA 3.0° TCH 45'. Thld dsplcd 500'.  
 Road.

**RUNWAY DECLARED DISTANCE INFORMATION**

RWY 06: TORA-5502 TODA-5502 ASDA-5502 LDA-5184

RWY 24: TORA-5502 TODA-5502 ASDA-5502 LDA-5000

**ARRESTING GEAR/SYSTEM**

RWY 06: EMAS

RWY 24: EMAS

**SERVICE:** S4 FUEL 100LL, JET A, A+ OX3 LGT When ATCT clsd  
 actvt MALSR Rwy 24; REIL Rwy 06; PAPI Rwy 06, HIRL Rwy 06-24;  
 windsocks—CTAF. PAPI Rwy 24 opr consly.

**NOISE:** Noise abatement procs in effect call arpt.

**AIRPORT REMARKS:** Attended 1100-0400Z†. For aft hrs svc call  
 216-261-8800 drg atndd hrs. Birds & wildlife on & invof arpt. Flt trg  
 prohibited 0400-1200Z†. ATCT vis SW ltd wi 500 ft AER Rwy 06.

**AIRPORT MANAGER:** 216-289-4111

**WEATHER DATA SOURCES:** AWOS-3PT (216) 289-4113

**COMMUNICATIONS:** CTAF 118.5 D-ATIS 119.95 (216)-289-4113

® CLEVELAND APP/DEP CON 125.35

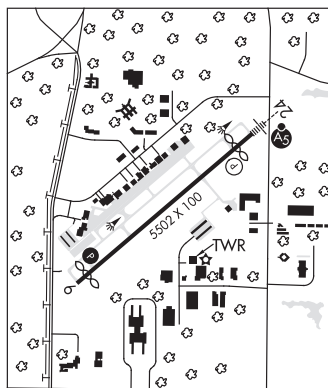
COUNTY TOWER 118.5 (1200-0400Z†) GND CON 121.85 CLNC DEL 121.85 (When twr clsd)

CLEARANCE DELIVERY PHONE: For CD when ATCT clsd ctc Cleveland Apmh at 216-352-2323.

**DETROIT**

H-10G, L-30G

IAP, AD



CONTINUED ON NEXT PAGE