

**GRANTSBURG MUNI** (GTG)(KGTG) 2 NE UTC-6(-5DT) N45°47.90' W92°39.86'  
 927 B NOTAM FILE GRB  
**RWY 05-23:** 3280X120 (TURF)

**GREEN BAY**  
 L-14I  
 IAP

**RWY 23:** Trees.  
**RWY 12-30:** H2999X60 (ASPH) MIRL  
**RWY 12:** Trees.  
**RWY 30:** Trees.

**SERVICE:** LGT ACTIVATE MIRL Rwy 12-30—CTAF.

**AIRPORT REMARKS:** Unattended. Rwy 05-23 CLOSED Nov 1-Apr 15. Deer & waterfowl on and invof arpt. Rwy 05-23 mkd with yellow cones. Rwy 12-30 has numerous cracks and vegetation in pavement. Rwy end 12 markings faded. Rwy end 30 markings faded. 1100' MSL/182' AGL, water twr lctd 5060' southwest Rwy 05.

**AIRPORT MANAGER:** 715-463-2405

**COMMUNICATIONS:** CTAF 122.9

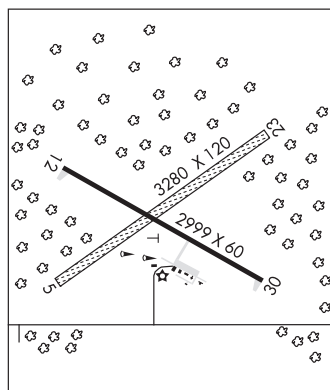
Ⓡ MINNEAPOLIS CENTER APP/DEP CON 121.05

**CLEARANCE DELIVERY PHONE:** For CD ctc Minneapolis ARTCC at 651-463-5588.

**RADIO AIDS TO NAVIGATION:** NOTAM FILE RZN.

**SIREN (L) DME** 109.4 RZN Chan 31 N45°49.23' W92°22.47' 264° 12.2 NM to fld. 987.

DME unusable:  
 115°-320° byd 25 NM blo 4,000'



**GREEN BAY/AUSTIN STRAUBEL INTL** (GRB)(KGRB) 7 SW UTC-6(-5DT) N44°29.08' W88°07.78'  
 695 B LRA Class I, ARFF Index C NOTAM FILE GRB MON Airport

**GREEN BAY**  
 H-2K, L-31A  
 IAP, AD

**RWY 18-36:** H8700X150 (CONC-GRVD) S-95, D-165, 2S-175, 2D-275 PCN 57 R/D/W/T HIRL

**RWY 18:** REIL. PAPI(P4R)—GA 3.0° TCH 54'. RVR-R Thld dsplcd 499'. Road. Rgt tfc.

**RWY 36:** MALSR. PAPI(P4L)—GA 3.0° TCH 50'. RVR-T

**RWY 06-24:** H7700X150 (CONC-GRVD) S-90, D-160, 2S-175, 2D-260 PCN 58 R/D/W/T HIRL

**RWY 06:** MALSR. PAPI(P4L)—GA 3.0° TCH 40'. RVR-T

**RWY 24:** PAPI(P4L)—GA 3.0° TCH 50'. RVR-R

**LAND AND HOLD—SHORT OPERATIONS**

LDG RWY	HOLD—SHORT POINT	AVBL LDG DIST
RWY 18	06-24	2692
RWY 24	18-36	6050
RWY 36	06-24	4932

**RUNWAY DECLARED DISTANCE INFORMATION**

RWY 06:	TORA-7699	TODA-7699	ASDA-7699	LDA-7699
RWY 18:	TORA-8700	TODA-8700	ASDA-8700	LDA-8201
RWY 24:	TORA-7699	TODA-7699	ASDA-7699	LDA-7699
RWY 36:	TORA-8201	TODA-8201	ASDA-8201	LDA-8201

**SERVICE:** S4 FUEL 100LL, JET A 0X1, 3 LGT ACTIVATE MALSR Rwy

06 and Rwy 36; REIL Rwy 18; HIRL Rwy 06-24 and Rwy 18-36—CTAF. PAPI Rwy 06, Rwy 18, Rwy 24 and Rwy 36 opr continuously. When twr is clsd the preferred rwy preset on low or med ints; increase ints—CTAF.

**NOISE:** Request voluntary compliance in avoiding noise sensitive areas N & E of arpt between midnight and 6 A.M.

**AIRPORT REMARKS:** Attended 1100-0400Z±. Birds on & invof arpt. Twy D wbnrd no turn onto Twy J. Twy J southwestbound no turn onto northbound Twy M. Twy M southbound no turn onto Twy J. Twy J southwestbound no turn onto eastbound Twy D. Twys C not avbl for acf with more than 30 pax seats. Flight Notification Service (ADCUS) available. Twy D btn Twy H and apch end Rwy 24 clsd to acft wingspan more than 118 ft.

**AIRPORT MANAGER:** 920-498-4800

**WEATHER DATA SOURCES:** ASOS (920) 494-7140 LLWAS.

**COMMUNICATIONS:** CTAF 118.7 ATIS 124.1

GREEN BAY RCO 122.2 (GREEN BAY RADIO)

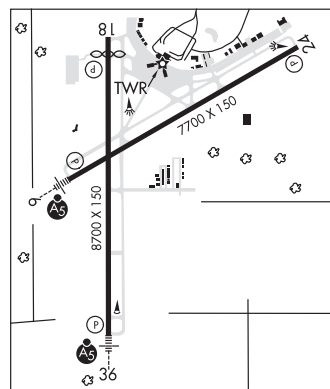
Ⓡ GREEN BAY APP CON 119.4 (1130-0530Z±)

Ⓡ GREEN BAY DEP CON 126.55 (1130-0530Z±)

Ⓡ MINNEAPOLIS CENTER APP/DEP CON 124.4 (0530-1130Z±)

GREEN BAY TOWER 118.7 (1130-0530Z±) GND CON 121.9 CLNC DEL 121.75

**CLEARANCE DELIVERY PHONE:** When atc clsd for CD if una to ctc on FSS freq, ctc Minneapolis ARTCC at 651-463-5588.



CONTINUED ON NEXT PAGE

## CONTINUED FROM PRECEDING PAGE

AIRSPACE: CLASS C svc ctc APP CON svc 1130-0530Z†; other times CLASS E.

RADIO AIDS TO NAVIGATION: NOTAM FILE GRB.

(VH) (H) VORTACW 115.5 GRB Chan 102 N44°33.31' W88°11.69' 146° 5.1 NM to fld. 767/1E.

VOR unusable:

000°-025° byd 40 NM  
 026°-036° byd 40 NM blo 2,600'  
 026°-036° byd 49 NM  
 040°-047° byd 40 NM  
 048°-058° byd 40 NM blo 18,000'  
 059°-065° byd 40 NM  
 221°-233° byd 40 NM  
 255°-265° byd 40 NM  
 270°-300° blo 7,000'

DEPRE NDB (MHW/LOM) 332 SG N44°23.91' W88°07.97' 003° 5.2 NM to fld. 638/2W.

FAMIS NDB (LOMW) 356 GR N44°26.43' W88°14.37' 063° 5.4 NM to fld. 711/2W.

ILS/DME 109.5 I-GRB Chan 32 Rwy 06. Class IE. LOM FAMIS NDB. Unmonitored when twr clsd. Localizer backcourse DME unusable byd 15° right of course.

ILS 109.9 I-SGZ Rwy 36. Class IE. LOM DEPRE NDB. Unmonitored when twr clsd.

ASR (1130-1730Z†)

**GUTZMER'S TWIN OAKS** (See WHITEWATER on page 399)

**HARTFORD MUNI** (HXF)(KHXF) 2 NW UTC-6(-5DT) N43°21.00' W88°23.41'

CHICAGO

1070 B TPA—See Remarks NOTAM FILE GRB

L-28H

RWY 09-27: H3401X75 (ASPH) S-8 MIRL 0.6% up E

IAP

RWY 09: REIL. PAPI(P4L)—GA 3.0° TCH 40'.

RWY 27: REIL. PAPI(P4L)—GA 3.0° TCH 40'.

RWY 18-36: 2231X196 (TURF) 1.5% up N

SERVICE: FUEL 100LL, JET A+, MOGAS LGT Actvt REIL Rwy 09 and 27—CTAF. MIRL Rwy 09-27 preset to low SS-SR, to incr intst and actvt—CTAF.

AIRPORT REMARKS: Unattended. Glider and ultralight activity on arpt. 24 hr fuel avbl with credit card. Rgt tfc pattern ultralight and glider acct. Rwy 18, slight downhill slope. Rwy 36 +78' ft water twr 3885' from apch end. TPA—1570 (500) ultralights. Rwy 18-36 marked with orange and white wooden A-frames.

AIRPORT MANAGER: 262-673-8225

COMMUNICATIONS: CTAF/UNICOM 123.0

® MILWAUKEE APP/DEP CON 125.35

CLEARANCE DELIVERY PHONE: For CD ctc Chicago ARTCC at 630-906-8921.

RADIO AIDS TO NAVIGATION: NOTAM FILE MKE.

BADGER (H) (H) VORW/DME 116.4 BAE Chan 111 N43°07.01' W88°17.06' 340° 14.7 NM to fld. 1070/2E.

WEST BEND (T) VORW 109.8 BJB N43°25.32' W88°07.51' 251° 12.4 NM to fld. 871/1W. NOTAM FILE ETB.