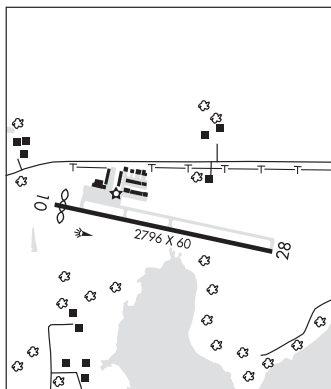


MAPLE LAKE MUNI—BILL MAVENCAMP SR FLD (MGG)(KMG) 1 NE UTC-6(-5DT) N45°14.16'

TWIN CITIES
L-14H, A
IAP, AD

W93°59.14'
1028 B NOTAM FILE MGG
RWY 10-28: H2796X60 (ASPH) LIRL(NSTD)
RWY 10: Thld dsplcd 100'. P-line.
RWY 28: Trees.
SERVICE: FUEL 100LL LGT Rwy 10-28 nstd LIRL due to 400' spacing btr lgts, 20' fm edge.
AIRPORT REMARKS: Unattended. Migratory waterfowl on and invof arpt. Fuel avbl H24 with credit card. One tkof/ldg per flt oprn, no tgl or trg.
AIRPORT MANAGER: 320-963-3738
WEATHER DATA SOURCES: AWOS-3 128.325 (320) 963-3300.
COMMUNICATIONS: CTAF/UNICOM 122.8
MINNEAPOLIS APP/DEP CON 126.5
CLEARANCE DELIVERY PHONE: For CD ctc Minneapolis Apch at 612-726-9086.
RADIO AIDS TO NAVIGATION: NOTAM FILE PNM.
DARWIN (L) DME 109.0 DWN Chan 27 N45°05.25' W94°27.23' 066° 21.8 NM to fld. 1130.

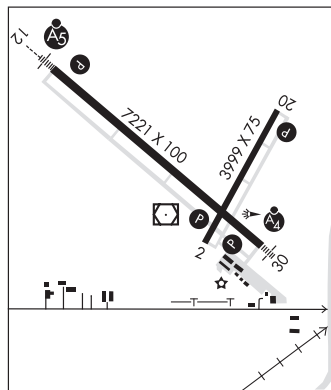


MARSHALL

SOUTHWEST MINNESOTA RGNL MARSHALL/RYAN FLD (MML)(KMML) 1 W UTC-6(-5DT)

OMAHA
H-21, L-121
IAP

N44°27.10' W95°49.47'
1183 B NOTAM FILE MML
RWY 12-30: H7221X100 (ASPH) S-72, D-105 PCN 27 F/B/X/T HIRL
RWY 12: MALS. PAPI(P4L)—GA 3.0° TCH 50'.
RWY 30: MALS. PAPI(P4L)—GA 3.0° TCH 32'.
RWY 02-20: H3999X75 (ASPH) MIRL
RWY 02: REIL. PAPI(P4L)—GA 3.0° TCH 32'.
RWY 20: REIL. PAPI(P4L)—GA 3.0° TCH 57'.
SERVICE: S4 FUEL 100LL, JET A LGT ACTIVATE MALS Rwy 12; MALS Rwy 30; REIL Rwy 02 & 20; PAPI Rwy 12, 30, 02, & 20; HIRL Rwy 12-30; MIRL Rwy 02-20—CTAF.
AIRPORT REMARKS: Attended Mon-Thu 1400-2300Z. For svc after hrs call 507-532-3164. Self svc fuel avbl 24 hrs with credit card.
AIRPORT MANAGER: 507-537-6051
WEATHER DATA SOURCES: AWOS-3PT 120.150 (507) 532-5269.
COMMUNICATIONS: CTAF/UNICOM 122.8
MARSHALL RCO 122.5 (PRINCETON RADIO)
MINNEAPOLIS CENTER APP/DEP CON 127.1
GCO 121.725 (MINNEAPOLIS CENTER and FLIGHT SERVICES)
CLEARANCE DELIVERY PHONE: For CD if una to ctc on FSS freq, ctc Minneapolis ARTCC at 651-463-5588.
RADIO AIDS TO NAVIGATION: NOTAM FILE MML.
MARSHALL (T) (T) VORW/DME 111.0 MML Chan 47 N44°26.90' W95°49.49' at fld. 1180/5E. unmonitored.
GARNO NDB (LOMW) 253 GB N44°30.12' W95°54.66' 124° 4.8 NM to fld. 1178/5E.
ILS 109.7 I-GBY Rwy 12. LOM GARNO NDB. Unmonitored.



MARSHALL N44°26.90' W95°49.49' NOTAM FILE MML.

OMAHA
L-121
RCO 122.5 (PRINCETON RADIO)

(T) (T) VORW/DME 111.0 MML Chan 47 at Southwest Minnesota Rgnl Marshall/Ryan Fld. 1180/5E. unmonitored.