

CABOOL MEML (TVB)(KTVB) 1 NE UTC-6(-5DT) N37°07.95' W92°05.04'

1220 B NOTAM FILE COU

RWY 03-21: H3002X60 (ASPH-AFSC) S-4 MIRL 0.4% up SW

RWY 03: Thld dspcd 190'. Road. Rgt tfc.

RWY 21: Trees.

SERVICE: LGT Dusk-Dawn. Actvt MIRL Rwy 03-21—CTAF. Bcn located 0.9 of mile W/NW of arpt on top of water twr.

AIRPORT REMARKS: Unattended. Birds invof rwy. Ultralight activity on and invof arpt.

AIRPORT MANAGER: 417-962-3136

COMMUNICATIONS: CTAF 122.9

Ⓡ **KANSAS CITY CENTER APP/DEP CON** 128.35

CLEARANCE DELIVERY PHONE: For CD ctc Kansas City ARTCC at 913-254-8508.

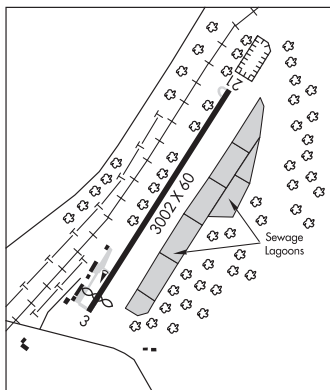
RADIO AIDS TO NAVIGATION: NOTAM FILE COU.

MAPLES (L) TACAN Chan 81 MAP (113.4) N37°35.45' W91°47.31' 201° 30.9 NM to fld. 682/6E.

KANSAS CITY

L-16G

IAP



CAHOKIA/ST LOUIS

ST LOUIS DOWNTOWN (CPS)(KCPS) 1 E UTC-6(-5DT) N38°34.22' W90°09.31'

413 B ARFF Index—See Remarks NOTAM FILE CPS

RWY 12R-30L: H7002X150 (ASPH-GRVD) S-65, D-95, 2S-160, 2D-175 PCN 48 F/D/X/T HIRL

RWY 12R: REIL. PAPI(P4L)—GA 3.0° TCH 49'. Tree. Rgt tfc.

RWY 30L: MALSR. PAPI(P4L)—GA 3.0° TCH 53'. Pole.

RWY 12L-30R: H5301X75 (CONC) S-30, D-30 PCN 10 F/D/X/T MIRL

RWY 12L: REIL. Tree.

RWY 30R: REIL. Tree. Rgt tfc.

RWY 05-23: H2799X75 (ASPH) S-12 PCN 11 R/C/W/T MIRL

RWY 05: Tree.

RWY 23: Tower.

RUNWAY DECLARED DISTANCE INFORMATION

RWY 05: TORA-2799 TODA-2799 ASDA-2799 LDA-2799

RWY 12L: TORA-5300 TODA-5300 ASDA-5300 LDA-5300

RWY 12R: TORA-7002 TODA-7002 ASDA-7002 LDA-7002

RWY 23: TORA-2799 TODA-2799 ASDA-2799 LDA-2799

RWY 30L: TORA-7002 TODA-7002 ASDA-7002 LDA-7002

RWY 30R: TORA-5300 TODA-5300 ASDA-5300 LDA-5300

SERVICE: S4 FUEL 100LL, JET A OX1 LGT ACTIVATE MALSR Rwy 30L when twr clsd—CTAF. REIL Rwy 30R—CTAF. HIRL Rwy 12R-30L preset on med ints when twr clsd. MIRL Rwy 12L-30R not avbl when twr clsd.

AIRPORT REMARKS: Attended continuously. Migratory waterfowl on and invof arpt. Be alert: intensive student training and helicopter operations. Sfc conds not mntd 0300-1300Z±. Rwy 12R-30L 2D-200 with PPR. Class IV, ARFF Index A. Clsd to sked acr ops grt than 9 psgr seats. Unsked acr ops grt than 30 psgr seats rqr 12 hr PPR. Mon-Sun (1300-0300Z±) other times by req 618-337-6060. After hrs ctc 618-646-8263. Rwy 05-23 not avbl for unscheduled acr at least 31 psgr seats excp taxi. Rwy 12L-30R not avbl for unscheduled acr at least 31 psgr seats excp taxi. All twys excp Twy B4 PPR acft over 120,000 lbs. Rwy 05 and 23 sfc markings faded.

AIRPORT MANAGER: 618-337-6060

WEATHER DATA SOURCES: ASOS (618) 332-0001 LAWRS.

COMMUNICATIONS: CTAF 119.925 ATIS 121.45 UNICOM 122.95

Ⓡ **SAINT LOUIS APP/DEP CON** 123.7

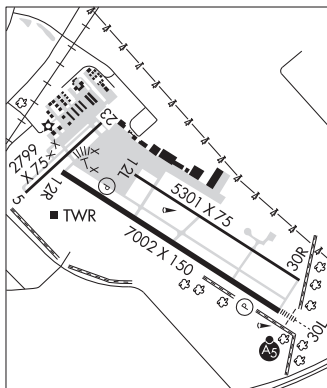
DOWNTOWN TOWER 119.925 (1230-0400Z±) **GND CON** 121.8 **CLNC DEL** 118.275 (121.8 when twr clsd)

AIRSPACE: CLASS D svc 1230-0400Z±; other times CLASS G.

ST LOUIS

H-50, L-27C, A

IAP, AD



CONTINUED ON NEXT PAGE

CONTINUED FROM PRECEDING PAGE

RADIO AIDS TO NAVIGATION: NOTAM FILE STL.

TROY (L) (L) VORTACW 116.0 TOY Chan 107 N38°44.35' W89°55.12' 224° 15.0 NM to fld. 576/4E.

TACAN AZIMUTH unusable:

255°-270°

300°-310°

ACORE NDB (LOMW) 350 CP N38°31.19' W90°03.56' 304° 5.4 NM to fld. 550/OE. NOTAM FILE CPS.

ILS 109.1 I-CPS Rwy 30L. Class IA. LOM ACORE NDB. LOC unmonitored when ATCT closed. LOC unusable byd 14° rgt of course. OM unmonitored when ATCT closed.

COMM/NAV/WEATHER REMARKS: Emerg frequency 121.5 not avbl at twr.

CAMDENTON MEML—LAKE RGNL (OZS)(KOZS) 3 SE UTC-6(-5DT) N37°58.36' W92°41.43'

KANSAS CITY

1062 B NOTAM FILE OZS

H-5D, L-16G

RWY 15-33: H5002X75 (ASPH) S-26, D-41 PCN 100F/D/X/T MIRL

IAP

RWY 15: REIL. PAPI(P4L)—GA 3.0° TCH 42'.

RWY 33: REIL. PAPI(P4L)—GA 3.0° TCH 42'.

SERVICE: S4 FUEL 100LL, JET A+ OX 4 LGT ACTVT REIL Rws 15 and 33; PAPI Rws 15 and 33; MIRL Rwy 15-33—CTAF.

AIRPORT REMARKS: Attended Oct-Mar 1400-2300Z‡, Apr-Sep 1400-0100Z‡. Wildlife on and invof arpt. Ultralight activity on and invof arpt. When landing Rwy 33, be alert to possible low level wind shear when winds are out of east or west.

AIRPORT MANAGER: 573-434-0848

WEATHER DATA SOURCES: AWOS-3PT 120.225 (573) 317-0412.

COMMUNICATIONS: CTAF/UNICOM 122.8

Ⓜ MIZZOU APP/DEP CON 124.1

CLEARANCE DELIVERY PHONE: For CD ctc Mizzou Apch at

417-868-5620/5619.

RADIO AIDS TO NAVIGATION: NOTAM FILE COU.

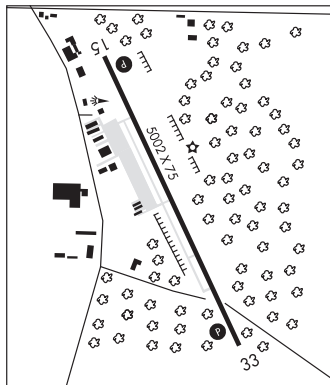
SUNSHINE (VL) (L) VORW/DME 108.4 SHY Chan 21 N38°02.44'

W92°36.14' 226° 5.8 NM to fld. 932/OE.

VOR unusable:

110°-230° byd 40 NM

355°-007° byd 40 NM



CAMERON MEML (EZZ)(KEZZ) 2 SW UTC-6(-5DT) N39°43.65' W94°16.58'

KANSAS CITY

1040 B NOTAM FILE COU

L-27A

RWY 17-35: H4000X75 (CONC) S-30 MIRL 0.4% up N

IAP

RWY 17: REIL. PAPI(P4L)—GA 3.0° TCH 21'. Trees.

RWY 35: REIL. PAPI(P4L)—GA 3.0° TCH 22'.

SERVICE: FUEL 100LL LGT MIRL Rwy 17-35, PAPI Rwy 17 and Rwy 35, REIL Rwy 17 and Rwy 35 opr dusk-0600Z‡, after 0600Z‡

ACTIVATE and incr ints—CTAF.

AIRPORT REMARKS: Attended Mon-Fri 1500-2300Z‡, Sat irregularly.

Automated self fuel avbl 24 hrs.

AIRPORT MANAGER: 816-632-2423

WEATHER DATA SOURCES: AWOS-3PT 121.05 (816) 933-2124.

COMMUNICATIONS: CTAF/UNICOM 122.8

Ⓜ KANSAS CITY APP/DEP CON 118.4

CLNC DEL 121.6

CLEARANCE DELIVERY PHONE: For CD ctc Kansas City Apch at 816-329-2710.

RADIO AIDS TO NAVIGATION: NOTAM FILE STJ.

ST JOSEPH (H) (H) VORTACW 115.5 STJ Chan 102 N39°57.63'

W94°55.51' 107° 33.1 NM to fld. 1159/8E.

