

CONCORD MUNI (CON)(KCON) P (ARNG) 2 E UTC-5(-4DT) N43°12.16' W71°30.14'

NEW YORK

342 B NOTAM FILE CON

H-11D, 12K, L-32H

RWY 17-35: H6005X100 (ASPH) S-43, D-60 HIRL

IAP, AD

RWY 17: PAPI(P4L)—GA 3.0° TCH 50'. Thld dsplcd 641'. Tree.

RWY 35: MALSR. VASI(V4L)—GA 3.0° TCH 50'. Trees.

RWY 12-30: H3200X75 (ASPH) S-30 MIRL

RWY 12: Trees.

RWY 30: Trees.

SERVICE: S4 FUEL 100LL, JET A LGT ACTIVATE MALSR Rwy 35,

HIRL Rwy 17-35, MIRL Rwy 12-30—CTAF. **MILITARY— FUEL**

J8(Mil)—PPR (NC-100LL - Avbl H24 with credit card; A - Avbl

1230-2200Z±, OT fone C603-228-2267 and flw prompts.)

AIRPORT REMARKS: Attended 1200-2200Z±, exc Thanksgiving, Christmas,

and New Years Day. Wildlife on and invof arpt. Hvy hel act 1 NM ESE

of arpt 800 ft & blw. Self serve 100LL avbl 24 hrs with credit card.

For Jet A aft hrs call 603-228-2267 & flw prompts. Rwy 35

designated calm wind rwy. Day & ngt VFR hel ops to & fm New

Hampshire State Police hngr. Ops on National Guard twy & ramp

prohibited wo prior cdm due to scy. Mil twy & ramp PCN R/A/W/T. Ops

off paved sfcs prohibited due to conservation mgmt acts. Compass

rose calibrated 2014.

AIRPORT MANAGER: 603-228-2267

WEATHER DATA SOURCES: ASOS 132.325 (603) 224-6558.

COMMUNICATIONS: CTAF/UNICOM 122.7

RCO 122.2 (BANGOR RADIO)

Ⓡ **BOSTON APP/DEP CON** 127.35

CLNC DEL 133.65

CLEARANCE DELIVERY PHONE: For CD ctc Boston Apch at 603-594-5552.

AIRSPACE: CLASS E.

RADIO AIDS TO NAVIGATION: NOTAM FILE CON.

(L) (L) **VOR/DME** 112.9 CON Chan 76 N43°13.19' W71°34.53' 123° 3.4 NM to fld. 715/15W.

VOR unusable:

022°-032° byd 20 NM blo 8,000'

190°-210° byd 12 NM blo 4,000'

318°-326° byd 30 NM blo 12,000'

DME unusable:

022°-032° byd 20 NM blo 8,000'

082°-110° byd 30 NM blo 5,000'

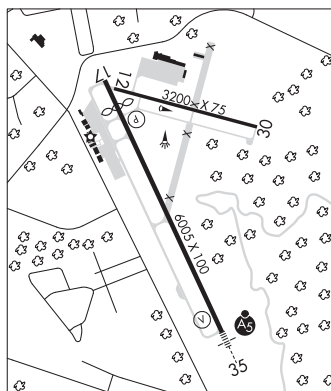
190°-210° byd 12 NM blo 4,000'

290°-300° byd 30 NM blo 7,000'

318°-326° byd 30 NM blo 12,000'

EPSOM NDB (LOM) 216 CO N43°07.13' W71°27.16' 353° 5.5 NM to fld. NDB unusable byd 20 NM.

ILS 108.7 I-CON Rwy 35. Class IA. LOM EPSOM NDB. NDB unusable byd 20 NM.



DEAN MEML (See HAVERHILL on page 150)

DILLANT/HOPKINS (See KEENE on page 151)

EPSOM N43°07.13' W71°27.15' NOTAM FILE CON.

NEW YORK

NDB (MHW/LOM) 216 CO 353° 5.5 NM to Concord Muni. 355/16W.

L-32H, 33D

NDB unusable:

Byd 20 NM