

NORFOLK INTL (ORF)(KORF) 3 NE UTC-5(-4DT) N36°53.68' W76°12.07'

WASHINGTON

26 B LRA Class I, ARFF Index C NOTAM FILE ORF

H-101, 121, L-350, 36H

RWY 05-23: H9001X150 (ASPH-CONC-GRVD) S-150, D-200,

IAP, AD

2S-175, 2D-350, 2D/2D2-475 PCN 53 R/C/W/T HIRL CL

RWY 05: MALSR. PAPI(P4L)—GA 3.0° TCH 71'. RVR-T Thld dsplcd 1001'. Trees. Rgt tfc.**RWY 23:** MALSR. PAPI(P4L)—GA 3.0° TCH 55'. RVR-R Pole.**RWY 14-32:** H4876X150 (ASPH-GRVD) S-75, D-100, 2S-127

PCN 27 F/A/W/T MIRL

RWY 14: REIL. PAPI(P2L)—GA 3.0° TCH 36'. Thld dsplcd 575'. Tree. Rgt tfc.**RWY 32:** REIL. PAPI(P2L)—GA 3.0° TCH 34'. Tree.**RUNWAY DECLARED DISTANCE INFORMATION****RWY 05:** TORA-9001 TODA-9001 ASDA-8809 LDA-7809**RWY 14:** TORA-4876 TODA-4876 ASDA-4876 LDA-4301**RWY 23:** TORA-9001 TODA-9001 ASDA-8995 LDA-8995**RWY 32:** TORA-4876 TODA-4876 ASDA-3901 LDA-3901**SERVICE:** S2 FUEL 100LL, JET A OX 1, 2, 4**NOISE:** Noise abatement procedures in effect.**AIRPORT REMARKS:** Attended continuously. Parachute Jumping. Flocks of birds on and in/ovf arpt. Intmt afd mowing ops Mar-Nov. Rwy 05-23 grvd 7300' X 130' standard grooving beginning 200' from AER 05.

Rwy 05-23 longl cracks & spalling. Ldg fee. Flight Notification Service (ADCUS) avbl.

AIRPORT MANAGER: 757-857-3344**WEATHER DATA SOURCES:** ASOS (757) 460-9348 WSP.**COMMUNICATIONS:** ATIS 127.15 (757) 464-1390**RCO 122.1R 116.9T (LEESBURG RADIO)**Ⓡ **APP CON 118.9 (010°-080°) (180°-310°) 125.7(311°-009°)****TOWER 120.8 GND CON 121.9 CLNC DEL 118.5**Ⓡ **DEP CON 125.2****AIRSPACE:** CLASS C svc ctc APP CON.**RADIO AIDS TO NAVIGATION:** NOTAM FILE ORF.**(VH) (H) VORTAC 116.9 ORF Chan 116 N36°53.51' W76°12.02' at fld. 20/7W.**

VOR unusable:

050°-070° byd 40 NM

100°-150° byd 40 NM

170°-180° byd 40 NM

211°-221° byd 40 NM blo 6,000'

211°-221° byd 81 NM

260°-280° byd 40 NM

306°-324° byd 40 NM

325°-335° byd 10 NM blo 4,000'

325°-335° byd 20 NM

336°-340° byd 40 NM

350°-020° byd 40 NM

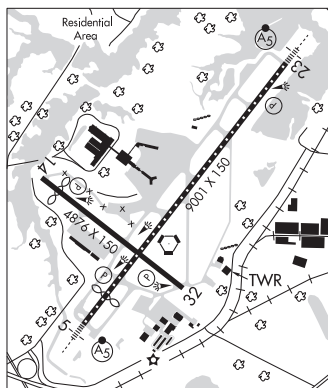
Byd 30 NM blo 2,500'

TACAN AZIMUTH unusable:

Byd 30 NM blo 2,500'

DME unusable:

Byd 30 NM blo 2,500'

ILS/DME 109.1 I-ORF Chan 28 Rwy 05. Class IB. Glideslope unusable for coupled apch blw 1,180' MSL.**ILS/DME 109.1 I-JZQ Chan 28 Rwy 23. Class IA.****NORFOLK NS (CHAMBERS FLD)** (NGU)(KNGU) N 0 NW UTC-5(-4DT) N36°56.25'

WASHINGTON

W76°17.36'

H-101, 121, L-350, 36H

15 B NOTAM FILE NGU Not insp.

DIAP, AD

RWY 10-28: H8370X200 (ASPH-GRVD) PCN 56 R/B/W/T HIRL CL**RWY 10:** ALSF2. OLS. TDZL. REIL. PAPI(P4R)—GA 3.0° TCH 35'. Thld dsplcd 299'.**RWY 28:** SSALF. OLS. TDZL. REIL. PAPI(P4R)—GA 3.0° TCH 36'. Thld dsplcd 995'. Rgt tfc.**RUNWAY DECLARED DISTANCE INFORMATION****RWY 10:** TORA-8370 LDA-8071**RWY 28:** TORA-8370 LDA-7375**ARRESTING GEAR/SYSTEM****RWY 10** HOOK E28(B) (1500 FT).HOOK E28 (B) (1062 FT). **RWY 28**

CONTINUED ON NEXT PAGE

CONTINUED FROM PRECEDING PAGE

SERVICE: OX 1, 2 **MILITARY—A-GEAR** Avoid centrin lgt Rwy 10-28 dur cable engagement to prevent tailhook skip. Dist Rwy 28 measured fr displ thr. E-28(B) in raised posn at dep end of rwy nrmlly. Shortfld gear avbl with 20 min PN. **JASU** (NC-10C) (NC-SA/A1) (NCPP-105 Ctc Air Ops Duty Officer to ensure avbl.) **FUEL** J5. No tran copter hot pit wo prior coord with host squadron. **FLUID** ADI SP PRESAIR LHOX LOX **OIL** Unavbl. **TRAN ALERT** Ltd tran maint avbl wkend only 1200-2000Z†. Tran maint unavbl OT. 2 hr PN reqr for LOX. Lavatory svc unavbl for C-130 acft. Potable water unavbl. No tran work/msn planning/briefing spaces or COMSEC stor for dets.

NOISE: Noise abatement: No practice apch Mon-Sat 0400-1200Z†, Sun 0400-1800Z†. OT by NOTAM. No copter ovft Willoughby Spit exc via Point Xray (Chambers TACAN R-042/1.5 DME) or point Yankee (Chambers Tacan R-009/1.8 DME) at 500'.

MILITARY REMARKS: CLSD 0400Z† fourth THU NOV-1200Z† fourth FRI NOV, CLSD 1900Z† 24 DEC-1200Z† 26 DEC, CLSD 1900Z† 31 DEC-1200Z† 2 JAN. See FLIP AP/1 Supplementary Arpt Information. **RSTD** PPR for non Chambers fld based acft. DSN 262-3419/3429. C757-322-3419/3429. AMC/ATOC DSN 341-9926/7/8, C757-341-9926/7/8. Acft utilizing AMC trml ctc ATOC/AMC trml 15 min prior arr with load rpt. Acft overseas ctc AMC/ATOC via phone patch 2 hr prior arr for cstrm. All other acft, ctc Base Ops 15 min prior arr. **CAUTION** Extv fish spotter acft activity (single engine general aviation acft) upwards from 1500' over Chesapeake Bay and adjacent coastal waters. Do not mistake Norfolk Intl 5 NM SE for Chambers Field, while inbd on TACAN/RNAV Rwy 28 apchs. Chambers Field has a single rwy; Norfolk Intl has intersecting rwys. Arr/dep TCAS equipped acft should expect numerous TCAS alerts from ships or transmitting into/out of the Chesapeake and coastal waters. Extv VFR tfc opr west of Chambers Class D and Norfolk Class C airspace. Bird haz. Rwy 28 multiple cranes 1.2 NM to 1.3 NM fm DER 1600' L to 4000' R of cntrln 260' MSL. **TFC PAT** R tfc Rwy 28. Basic f/w/VFR min 1000' and 3 NM. Heliport Rwy 09-27. **MISC** Rwy 10-28 grooved. Flight plans for NS Norfolk, Chambers Fld and NAS Oceana should be faxed to DSN 565-9680, C757-445-9680, or emailed to W_CNI_Nrfk_NSNorfolk_N32_ATC_Users@navy.mil. To cfm receipt of flt plans call NS Norfolk, Chambers Fld flight planning supervisor at DSN 262-3419/3429, C757-322-3419/3429. For civil lndg permit (CALP) info ctc afld mgr C757-322-3419/3429.

COMMUNICATIONS: SFA ATIS 118.425 338.225

Ⓡ **NORFOLK APP CON** 118.9 273.475 (010°-310°) 125.7 335.625 (311°-009°)

CHAMBERS TOWER 124.3 379.15 **GND CON** 121.8 370.85 **CLNC DEL** 120.7 339.8

Ⓡ **DEP CON** 125.2 335.625 363.125

NAVY NORFOLK HELI TWR 126.375 290.5 (Opr Mon-Fri 1300-0400Z†, clsd Sat, Sun, and hol)

NAVY NORFOLK HELI GND CON 298.95 **AMC/ATOC** 130.65 349.5 **METRO** 271.6 **BASE OPS** 126.2 268.8

AIRSPACE: CLASS D.

RADIO AIDS TO NAVIGATION: NOTAM FILE ORF.

(VH) (H) **VORTAC** 116.9 ORF Chan 116 N36°53.51' W76°12.02' 310° 5.1 NM to fld. 20/7W.

VOR unusable:

050°-070° byd 40 NM

100°-150° byd 40 NM

170°-180° byd 40 NM

211°-221° byd 40 NM blo 6,000'

211°-221° byd 81 NM

260°-280° byd 40 NM

306°-324° byd 40 NM

325°-335° byd 10 NM blo 4,000'

325°-335° byd 20 NM

336°-340° byd 40 NM

350°-020° byd 40 NM

Byd 30 NM blo 2,500'

TACAN AZIMUTH unusable:

Byd 30 NM blo 2,500'

DME unusable:

Byd 30 NM blo 2,500'

CHAMBERS (L) TACAN Chan 86(Y) NGU (113.95) N36°56.40' W76°16.64' at fld. 10/10W. NOTAM FILE NGU.

TACAN AZIMUTH unusable:

261°-269° byd 20 NM

No NOTAM MP Wed 1230-1630Z†

ILS/DME 108.95 I-NGU Chan 26(Y) Rwy 10. Class IC. No NOTAM MP Wed 1230-1630Z†.

ASR/PAR

COMM/NAV/WEATHER REMARKS: Radar svc avbl Mon 1200Z† thru Fri 0400Z†. **ILS/TACAN/Radar**—ILS or LOC/DME Rwy 10—BC unused. ILS and TACAN no NOTAM MP Wed 1230-1630Z†. Radar—See Terminal Flap for Radar Minima.