

CONTINUED FROM PRECEDING PAGE

AIRSPACE: CLASS E.

RADIO AIDS TO NAVIGATION: NOTAM FILE AUG.

(VL) (DH) VOR/DME 114.95 AUG Chan 96(Y) N44°19.20' W69°47.79' at fld. 349/18W.

VOR unusable:

- 005°-015° byd 10 NM blo 7,000'
- 018°-050° byd 40 NM
- 055°-058° byd 40 NM
- 065°-089° byd 40 NM
- 075°-089° byd 25 NM blo 3,000'
- 090°-115° byd 15 NM
- 116°-175° byd 40 NM
- 116°-189° byd 25 NM blo 3,000'
- 188°-207° byd 40 NM
- 190°-205° byd 10 NM blo 5,000'
- 206°-220° byd 25 NM blo 3,000'
- 208°-213° byd 40 NM blo 3,000'
- 208°-213° byd 49 NM blo 7,000'
- 208°-213° byd 68 NM
- 225°-245° byd 40 NM
- 246°-256° byd 40 NM blo 7,000'
- 246°-256° byd 53 NM
- 257°-261° byd 40 NM
- 271°-275° byd 40 NM
- 300°-353° byd 40 NM

DME unusable:

- 010°-070° byd 25 NM blo 7,000'
- 071°-143° byd 25 NM blo 3,000'
- 144°-154° byd 25 NM blo 7,000'
- 155°-189° byd 25 NM blo 3,000'
- 190°-205° byd 10 NM blo 5,000'
- 206°-220° byd 25 NM blo 3,000'
- 221°-285° byd 15 NM blo 6,000'

DUNNS NDB (LOMW) 366 AU N44°24.66' W69°51.64' 171° 6.1 NM to fld. 238/18W.

ILS 108.7 I-AUG Rwy 17. Class IB. LOM DUNNS NDB. Glideslope unusable byd 5° right side of LOC course; blw 430'; byd 9 NM. LOC unusable fm 0.5 NM to thld abv 1,500'.

**BANGOR**

**BANGOR INTL** (BGR)(KBGR) P (ANG ARNG) 3 W UTC-5(-4DT) N44°48.45' W68°49.69'

192 B TPA—See Remarks LRA ARFF Index—See Remarks NOTAM FILE BGR

**RWY 15-33:** H11440X200 (ASPH-GRVD) S-100, D-210, 2D-400

PCN 120R/A/W/T HIRL CL

**RWY 15:** ALSF2. TDZL. PAPI(P4L)—GA 3.0° TCH 55'. RVR-TMR 0.4% down.

**RWY 33:** MALSR. PAPI(P4L)—GA 3.0° TCH 57'. RVR-TMR Trees.

**RUNWAY DECLARED DISTANCE INFORMATION**

**RWY 15:** TORA-11440 TODA-11440 ASDA-11440 LDA-11440

**RWY 33:** TORA-11440 TODA-11440 ASDA-11440 LDA-11440

**SERVICE:** S4 FUEL 100LL, JET A OX 2, 4 MILITARY—JASU 1(MD-3)

1(MC-11) (MA-1A) FUEL A++ (Mil), A, A+ (C207-992-4600)

(NC-100LL) FLUID SP PRESAIR LPOX LOX -Off-base contracted LOX

avbl H24-rqr 24 hr notice. OIL O-133-148(Mil)

**AIRPORT REMARKS:** Attended continuously. TPA for turbo jet acct is 2000(1808) unless otherwise instructed. ARFF Index B with Index E capabilities avbl 24/7. Flight Notification Service (ADCUS) available.

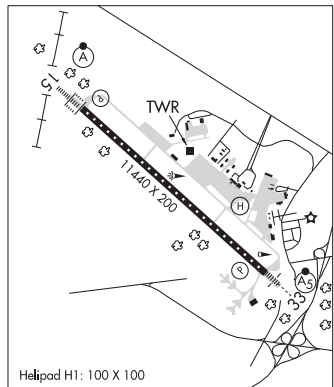
**MILITARY REMARKS:** Transient acct may be diverted to civilian side during non-duty hrs & weekends. Fee required; no ANG transient alert.

**CAUTION** Bash Phase II period Sep-Nov, Apr-May. Expect increased bird activity. Ctc Base Ops/Command Post/SOF for current bird watching cond. MISC Rwy 15-33 grooved. ANG Opr 1100-1930Z‡ Mon-Fri, clsd weekends and hol. PPR rqr for ANG ramp. Ctc afid mgmt DSN 698-7232, C207-404-7232 for PPR dur opr hrs. Pre-coord all transportation requirements and haz cargo with PPR rqr. PPR valid +/- 1 hr unless prior coord. 3 hr out call, 30 min out call 311.0 to CFM customs/AG and tran svc. Comd post C207-404-7788 24 hrs. ARNG Opr 1230-2100Z‡ Mon-Fri exc hol. Ltd maint. J8. PPR May-Oct svc DSN 626-1100.

**AIRPORT MANAGER:** 207-992-4600

**WEATHER DATA SOURCES:** ASOS 127.75 (207) 561-2515.

**HALIFAX**  
H-11D, L-321  
IAP, DIAP, AD



CONTINUED ON NEXT PAGE

## CONTINUED FROM PRECEDING PAGE

COMMUNICATIONS: ATIS 127.75 (207-561-2524) UNICOM 122.95

RCO 122.2 (BANGOR RADIO)

Ⓡ APP/DEP CON 118.925 124.5

TOWER 120.7 GND CON 121.9 CLNC DEL 135.9

AIRSPACE: CLASS C svc ctc APP CON.

RADIO AIDS TO NAVIGATION: NOTAM FILE BGR.

(VH) (H) VORTACW 114.8 BGR Chan 95 N44°50.51' W68°52.44' 155° 2.8 NM to fld. 360/19W.

ILS/DME 109.5 I-JVH Chan 32 Rwy 15. Class IIIE. DME also serves Rwy 33.

ILS/DME 109.5 I-BGR Chan 32 Rwy 33. Class IIIE. DME also serves Rwy 15. DME unusable byd 26° r of course.

ASR

HELIPAD H1: H100X100 (CONC)

**LUCKY LANDING MARINA SPB** (Ø6B) 7 N UTC-5(-4DT) N44°54.42' W68°48.30'

HALIFAX

115 LRA NOTAM FILE BGR

WATERWAY 02W-20W: 15000X4000 (WATER)

WATERWAY 02W: Rgt ttc.

SERVICE: FUEL 100LL

SEAPLANE REMARKS: Attended Apr-Oct dalgt hrs, unattended Nov-Mar. To vfy conditions and for fuel aft hrs call 207-951-2406. Water ldg area not marked. Rwy 02W wires on shore marked.

AIRPORT MANAGER: 207-951-2406

COMMUNICATIONS: CTAF 122.9

CLEARANCE DELIVERY PHONE: For CD ctc Bangor Apch at 207-561-2500 ext 1.

**BANKS** (See SWANS ISLAND on page 88)

## BAR HARBOR

**HANCOCK CO/BAR HARBOR** (BHB)(KBHB) 8 NW UTC-5(-4DT) N44°26.98' W68°21.69'

HALIFAX

H-11D, L-321

IAP

83 B Class IV, ARFF Index A NOTAM FILE BHB

RWY 04-22: H5200X100 (ASPH) D-72, 2S-91, 2D-100

PCN 40 F/D/X/T HIRL

RWY 04: REIL. VASI(V4L)—GA 3.0° TCH 55'. Trees.

RWY 22: MALSF. VASI(V4L)—GA 3.0° TCH 55'.

RWY 17-35: H3363X75 (ASPH) S-13, D-20 1.1% up N

RWY 17: Thld dspclcd 684'. Tree.

RWY 35: Thld dspclcd 111'.

**RUNWAY DECLARED DISTANCE INFORMATION**

RWY 04: TORA-5200 TODA-5200 ASDA-5200 LDA-5200

RWY 22: TORA-5200 TODA-5200 ASDA-5200 LDA-5200

SERVICE: S2 FUEL 100LL, JET A OX 4 LGT ACTVT MALSF Rwy 22,

REIL Rwy 04, VASI Rwy 04 and 22, HIRL Rwy 04-22-122.7.

NOISE: Durg VFR conds when wind speed less than 5 kts as rptd by AWOS or UNICOM, all acft using Rwy 04-22 are reqd to tkof and land on Rwy 22 for noise abatement procs.

**AIRPORT REMARKS:** Attended 1300-2300Z±. Birds on and invof arpt.

Grass areas unavbl for acft ops. Seaplane ramp unavbl for acft ops exc

PPR 207-667-7329. FICON not mnt Mon-Fri 0200-1230Z±,

wkends & hols. Rwy 04-22 due to hump at midpoint, opposite ends

of rwy not visible at gnd level. Rwy 17-35 not avbl for skedd acr ops

(ldg and tkof) more than 9 pax seats or unskd acr ops at least 31 pax seats. Rwy 17-35 N of Twy H avbl for acr ops

more than 9 pax seats for taxi only. 48 hr PPR for unskd acr ops at least 31 pax seats. Ctc amgr. PPR for overweight

ldgs. PPR for unskd acr ops rqrq 14 CFR 139 ARFF. Ctc amgr. Twy B clsd to all acft greater than 10,000 lbs. Twys F

and Twy G clsd Dec 1-Mar 31 annually.

AIRPORT MANAGER: 207-667-7329

WEATHER DATA SOURCES: AWOS-3PT 118.35 (207) 667-7364.

COMMUNICATIONS: CTAF/UNICOM 123.0

Ⓡ BANGOR APP/DEP CON 133.6

CLNC DEL 119.9

AIRSPACE: CLASS E.

RADIO AIDS TO NAVIGATION: NOTAM FILE BGR.

BANGOR (VH) (H) VORTACW 114.8 BGR Chan 95 N44°50.51' W68°52.44' 156° 32.2 NM to fld. 360/19W.

ILS/DME 108.3 I-BHB Chan 20 Rwy 22. Class IB.

COMM/NAV/WEATHER REMARKS: If CD freq unavbl ctc Bangor Apch at 207-561-2500 ext 1.

