

MISSOULA MONTANA (MSO)(KMSO) 4 NW UTC-7(-6DT) N46°54.98' W114°05.43'

3206 B Class I, ARFF Index B NOTAM FILE MSO

RWY 12-30: H9501X150 (ASPH-GRVD) S-145, D-170, 2D-255

PCN 83 F/D/W/T HIRL

RWY 12: MALSR. PAPI(P4L)—GA 3.0° TCH 55'. RVR-T**RWY 30:** REIL. PAPI(P4L)—GA 3.0° TCH 50'. RVR-R**RWY 08-26:** H4612X75 (ASPH-GRVD) S-30, D-50 PCN 40 F/D/W/T MIRL**RUNWAY DECLARED DISTANCE INFORMATION****RWY 08:** TORA-4612 TODA-4612 ASDA-4612 LDA-4612**RWY 12:** TORA-9501 TODA-9501 ASDA-9501 LDA-9501**RWY 26:** TORA-4612 TODA-4612 ASDA-4612 LDA-4612**RWY 30:** TORA-9501 TODA-9501 ASDA-9501 LDA-9501**SERVICE:** S4 FUEL 100LL, JET A1+ OX 1, 2, 3, 4 LGT When ATCT clsd ACTVT MALSR Rwy 12; PAPI Rwy 30; MIRL Rwy 08-26; HIRL Rwy 12-30—CTAF.**AIRPORT REMARKS:** Attended continuously. Migratory & small bird actvty on & invof arpt year round. Prchgt at or arnd arpt. Cold temperature airport. Altitude correction required at or below -12C. When twr clsd Rwy 08-26 clsd exc taxi. Hang glider ops, paraglider act 5.5 NM east of AER 30. Ctc arpt mgr to req apvl prior to ultralight ops. Rwy 12-30 180° turns for acct over 12,500 lbs GWT prohibited on all movement areas. Avoid locked turns at all times. Twy G btn Rwy 08 end to Rwy 12-30 rstd to acct under 12,500 lbs. Avoid locked turns at all times. Ldg fee for all coml acct and all acct over 12,500 lbs.**AIRPORT MANAGER:** 406-728-4381**WEATHER DATA SOURCES:** ASOS (406) 728-3743**COMMUNICATIONS:** CTAF 118.4 ATIS 126.65 (406-549-2989) UNICOM 122.95

Ⓡ SPOKANE APP/DEP CON 124.9 (1400-0620Z‡)

Ⓡ SALT LAKE CENTER APP/DEP CON 127.075 (0620-1400Z‡)

MILLER PEAK RCO 122.2 (GREAT FALLS RADIO)

TOWER 118.4 (1300-0500Z‡) GND CON 121.9

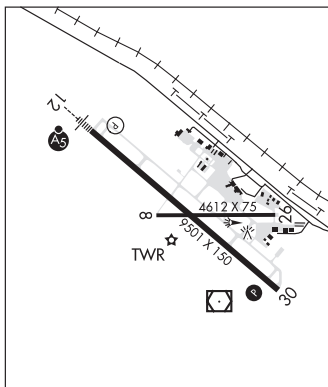
AIRSPACE: CLASS D svc 1300-0500Z‡; other times CLASS E.**RADIO AIDS TO NAVIGATION:** NOTAM FILE MSO.**(VL) (L) VOR/DME** 112.8 MSO Chan 75 N46°54.48' W114°05.02' at fld. 3202/13E.

VOR unusable:

047°-067° byd 30 NM
 067°-086° byd 30 NM blo 14,000'
 086°-120° byd 27 NM blo 13,000'
 086°-120° byd 36 NM blo 14,000'
 086°-154° byd 20 NM blo 11,000'
 120°-154° byd 35 NM blo 13,000'
 172°-227° byd 25 NM
 227°-247° byd 20 NM blo 12,000'
 227°-247° byd 30 NM
 228°-335° byd 40 NM
 247°-262° byd 30 NM blo 12,000'
 262°-277° byd 30 NM blo 10,000'
 297°-347° byd 30 NM
 347°-047° byd 10 NM
 349°-359°
 360°-157° byd 40 NM

DME unusable:

047°-067° byd 30 NM
 067°-086° byd 30 NM blo 14,000'
 086°-120° byd 27 NM blo 14,000'
 086°-120° byd 39 NM
 086°-154° byd 20 NM blo 11,000'
 120°-154° byd 35 NM blo 13,000'
 172°-227° byd 25 NM
 227°-247° byd 20 NM blo 12,000'
 227°-247° byd 30 NM
 247°-262° byd 30 NM blo 12,000'
 262°-277° byd 30 NM blo 10,000'
 297°-347° byd 30 NM
 347°-047° byd 10 NM

ILS 109.3 I-MSO Rwy 12. Class IA. LOC unusable byd 29° left of course byd 30° right of course.**GREAT FALLS**
H-1D, L-13C
IAP, AD**MULLAN PASS** MLP N47°27.42' W115°38.77' / 6028

ASOS 135.475 (208) 744-1721

GREAT FALLS
H-1D, L-13B