

## GREYBULL

**SOUTH BIG HORN CO** (GEY)(KGEY) 2 NW UTC-7(-6DT) N44°31.08' W108°04.98'

3942 B NOTAM FILE GEY

**RWY 16-34:** H7003X150 (ASPH) S-85, D-150, 2D-290 MIRL

**RWY 16:** REIL. PAPI(P4L)—GA 3.0° TCH 50'.

**RWY 34:** REIL. PAPI(P4L)—GA 3.0° TCH 50'.

**RWY 08-26:** H3953X75 (ASPH) S-12.5

**SERVICE:** S4 FUEL 100LL, JET A LGT ACTIVATE MIRL Rwy 16-34, PAPI Rwy 16 and Rwy 34, REIL Rwy 16 and Rwy 34—CTAF.

**AIRPORT REMARKS:** Unattended. Fuel 24 hr credit card svc avbl 100LL only. Jet A fuel is full svc only; for Jet A call 307-680-4897. Antelope on and invof rwy. Terrain 1066' abv aprt elevation 4-5 miles north and northeast of aprt. For Airframe or Powerplant rprs call 307-431-1466.

**AIRPORT MANAGER:** 307-337-8159

**WEATHER DATA SOURCES:** ASOS 135.325 (307) 765-9406. Opr full-time 0700-0659Z±.

**COMMUNICATIONS:** CTAF 122.9

Ⓡ SALT LAKE CENTER APP/DEP CON 127.75

**CLEARANCE DELIVERY PHONE:** For CD ct Salt Lake ARTCC at 801-320-2568.

**RADIO AIDS TO NAVIGATION:** NOTAM FILE WRL.

**WORLAND (VL) (DH) VOR/DME** 114.8 RLY Chan 95 N43°57.85' W107°57.05' 337° 33.7 NM to fld. 4204/13E.

VOR unusable:

070°-080° byd 40 NM blo 12,000'

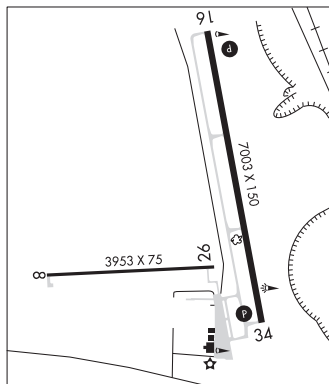
070°-080° byd 56 NM

081°-230° byd 40 NM

305°-327° byd 40 NM

350°-069° byd 40 NM

**BILLINGS**  
H-1E, L-13D  
IAP



**GTR GREEN RIVER INTERGALACTIC SPACEPORT** (See GREEN RIVER on page 307)

## GUERNSEY

**CAMP GUERNSEY** (GUR)(KGUR) CIV/MIL A 1 SE UTC-7(-6DT) N42°15.59' W104°43.70'

4402 B NOTAM FILE GUR

**RWY 14-32:** H5060X90 (ASPH-PFC) PCN 56 R/B/W/T MIRL

1.3% up NW

**RWY 14:** PAPI(P4L)—GA 3.3° TCH 38'.

**RWY 32:** PAPI(P4L)—GA 3.3° TCH 38'. Rgt tfc.

**SERVICE:** FUEL JET A LGT ACTVT PAPI Rwy 14 and 32; MIRL Rwy 14-32—CTAF.

**MILITARY—LGT** Mil bcn. FUEL Jet A avbl by PPR. 100LL not avbl.

**NOISE:** Noise abatement areas border W of afld.

**AIRPORT REMARKS:** Attended Apr-Sep Mon-Fri 1400-0600Z±, Oct-Mar Mon-Fri 1500-0500Z±, exc hol. Migratory water fowl, birds, and deer on and invof rwy. Rwy 14: 48 ft drop off on AER. Rwy 32: 12 ft drop off on AER. Rwy 14-32 10' asph non-wt bearing shoulders. bldg 13 ft blw sfc elev lctd 366 ft NW fr Rwy 32 dep zone wi clear zone. Twy D edge lgts OTS indef.

**MILITARY REMARKS:** RSTD All trans mil acct PPR DSN 344-7884/2378; C307-836-7884/2378. Extensive copter and C130 operations year round. North apr rstd to rotor wing/fixd wing UH-60/C-12 or smaller acct. Extv mil R/W and C-130/C17 F/W opr yr round. Actv weighing more than 12,500 lbs must use conc turn arounds at each thld int. All C130/C17 acct PPR. Air/Gnd eqpt and crash rescue avbl at ETA/ETD if rqr'd with PPR. **TFC PAT** Fixed wing 5900'. Rotary Wing 5100'. Left tfc Rwy 14, rgt tfc Rwy 32. **MISC** Small arms range within 3NM radius of GUR, sfc-4000 ft AGL. R7001 A, B, C, D and R7002 A, B, C 6NM NW, aircrews must obtain apvl fm Guernsey TWR prior to entering R7001 and R7002 when active. **ARNG** No tran mil maint avbl.

**AIRPORT MANAGER:** 307-836-7878

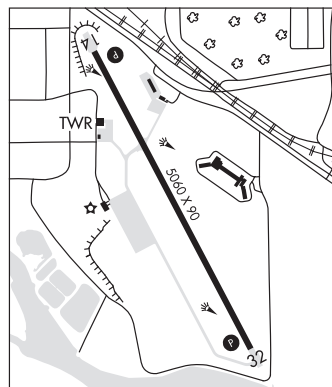
**COMMUNICATIONS:** CTAF 126.2 ATIS 119.825 (307-836-7862)

Ⓡ DENVER CENTER APP/DEP CON 135.6 363.025

**TOWER** 126.2 233.3 (1400-0600Z± 01 Apr-30 Sep; 1500-0500Z± 01 Oct-31 Mar; Mon-Fri exc hol.)

**COWBOY RDO** 122.7 (R-7001/R-7002)

**CHEYENNE**  
H-3F, 5A, L-12F  
IAP, AD



CONTINUED ON NEXT PAGE

CONTINUED FROM PRECEDING PAGE

AIRSPACE: CLASS D svc 1400-0600Z± 01 Apr - 30 Sep; 1500-0500Z± 01 Oct- 31 Mar; Mon-Fri exc hol; other times CLASS E.

RADIO AIDS TO NAVIGATION: NOTAM FILE DGW.

HIPSHER (VL) (DH) VORW/DME 115.75 IIP Chan 104(Y) N42°40.57' W105°13.57' 126° 33.4 NM to fld. 4906/12E.

VOR unusable:

- 165°-309° byd 40 NM
- 310°-320° byd 40 NM blo 8,300'
- 310°-320° byd 53 NM
- 321°-334° byd 40 NM
- 335°-345° byd 40 NM blo 7,500'
- 335°-345° byd 56 NM
- 346°-040° byd 40 NM

NDB (HW) 280 GYZ N42°14.40' W104°42.86' 321° 1.3 NM to fld. 4489/11E. NOTAM FILE GUR.

NDB unmtnd when ATCT clsd

COMM/NAV/WEATHER REMARKS: Required call to Guernsey ATCT prior to entering R-7001/R-7002. AN/FMQ-23 automated obs sys in use; briefing svc avbl fm 25 OWS DSN 228-6598/6599/6588 C520-228-6598.

HIPSHER N42°40.57' W105°13.57' NOTAM FILE DGW.  
(VL) (DH) VORW/DME 115.75 IIP Chan 104(Y) 304° 10.1 NM to Converse Co. 4906/12E.

CHEYENNE  
L-12F

VOR unusable:

- 165°-309° byd 40 NM
- 310°-320° byd 40 NM blo 8,300'
- 310°-320° byd 53 NM
- 321°-334° byd 40 NM
- 335°-345° byd 40 NM blo 7,500'
- 335°-345° byd 56 NM
- 346°-040° byd 40 NM

HOT SPRINGS CO (See THERMOPOLIS on page 322)

HULETT MUNI (W43) 2 SE UTC-7(-6DT) N44°39.77' W104°34.07'  
4264 B NOTAM FILE CPR

BILLINGS  
H-1F, 2H, L-12F, 13E  
IAP

RWY 13-31: H5500X75 (ASPH) S-12.5 MIRL 1.3% up SE

RWY 13: REIL. PAPI(P2L)—GA 3.0° TCH 38'.

RWY 31: REIL. PAPI(P2L)—GA 4.0° TCH 44'. Hill. Rgt tfc.

SERVICE: FUEL 100LL, JET A LGT ACTVT REIL Rwy 13 and 31; PAPI Rwy 13 and 31; MIRL 13-31—CTAF.

AIRPORT REMARKS: Unattended. 24 hr self svc credit card fuel avbl. Devils Tower National Monument lctd aprx 7 miles southwest of aprt. Voluntary 2 mile flgt avoidance radius in effect Jan-May and Jul-Dec. Voluntary 3 mile flgt avoidance radius in effect in Jun. Retro-reflective markers along twys.

AIRPORT MANAGER: 307-467-5771

WEATHER DATA SOURCES: AWOS-3PT 128.775 (307) 467-5575.

COMMUNICATIONS: CTAF/UNICOM 122.8

® DENVER CENTER APP/DEP CON 127.95

CLEARANCE DELIVERY PHONE: For CD ctc Denver ARTCC at 303-651-4257.

RADIO AIDS TO NAVIGATION: NOTAM FILE GCC.

GILLETTE (VH) (H) VORW/DME 114.6 GCC Chan 93 N44°20.87' W105°32.61' 056° 46.0 NM to fld. 4336/9E.

VOR unusable:

- 053°-157° byd 40 NM
- 158°-168° byd 40 NM blo 10,000'
- 158°-168° byd 56 NM
- 169°-188° byd 40 NM
- 189°-199° byd 40 NM blo 8,500'
- 189°-199° byd 46 NM
- 200°-238° byd 40 NM
- 253°-278° byd 20 NM blo 8,000'
- 259°-279° byd 40 NM
- 280°-320° byd 40 NM

DME unusable:

- 163°-193° byd 25 NM blo 10,300'
- 193°-268° byd 20 NM blo 8,000'
- 193°-268° byd 30 NM blo 13,000'
- 268°-333° byd 22 NM blo 10,500'

