

LEWISTON

LEWISTON/NEZ PERCE CO (LWS)(KLWS) 2 S UTC-8(-7DT) N46°22.47' W117°00.92'

SEATTLE

1442 B TPA—See Remarks Class I, ARFF Index A NOTAM FILE LWS MON Airport

H-1C, L-13B

RWY 08-26: H6511X150 (ASPH-GRVD) S-150, D-180, 2S-175,

IAP, AD

2D-400 PCN 56 F/A/X/T HIRL

RWY 08: REIL. VASI(V4L)—GA 3.0° TCH 45'. Rgt tfc.

RWY 26: MALSR. PAPI(P4L)—GA 3.0° TCH 51'. Tree.

RWY 12-30: H5003X75 (ASPH-GRVD) S-118, D-196, 2S-119

PCN 47 F/A/X/T MIRL 1.4% up SE

RWY 12: REIL. PAPI(P2L)—GA 3.0° TCH 40'. Rgt tfc.

RWY 30: PAPI(P2L)—GA 3.0° TCH 45'. Thld dsplcd 253'. Antenna.

RUNWAY DECLARED DISTANCE INFORMATION

RWY 08: TORA-6511 TODA-6511 ASDA-6511 LDA-6511

RWY 12: TORA-5003 TODA-5003 ASDA-4750 LDA-4750

RWY 26: TORA-6511 TODA-6511 ASDA-6511 LDA-6511

RWY 30: TORA-5003 TODA-5003 ASDA-5003 LDA-4750

SERVICE: S4 FUEL 100, 100LL, JET A LGT When ATCT clsd ACTVT

MALSR Rwy 26; REIL Rwy 08; PAPI Rwy 12 and Rwy 30—CTAF.

Rwy 12 PAPI unusbl byd 3.5 NM.

AIRPORT REMARKS: Attended 1330-0500Z. CLSD to unsked acr opns with

more than 30 psgr seats excp PPR call amgr 208-790-1050.

Frequent no radio AG acft activity invof arpt. LWS apn E hngr ramp clsd

to acrs exc GA and acft wingspan less than 58 ft. TPA—Heavy and

turbine powered acft 3002(1560) all others 2502(1060).

AIRPORT MANAGER: 208-748-9132

WEATHER DATA SOURCES: ASOS 135.575 (208) 746-4185. LAWRS.

COMMUNICATIONS: CTAF 119.4 UNICOM 122.95

RCO 122.3 (BOISE RADIO)

Ⓡ SEATTLE CENTER APP/DEP CON 123.95

TOWER 119.4 (1400-0600Z) GND CON 121.9

CLEARANCE DELIVERY PHONE: For CD if una to ctc on FSS freq, ctc Seattle ARTCC at 253-351-3694.

AIRSPACE: CLASS D svc 1400-0600Z; other times CLASS E.

RADIO AIDS TO NAVIGATION: NOTAM FILE LWS.

NEZ PERCE (L) (L) VOR/DME 114.45 MQG Chan 91(Y) N46°22.89' W116°52.17' 246° 6.1 NM to fld.

1734/20E. DME unmonitored.

VOR unusable:

060°-120° byd 20 NM blo 12,000'

121°-165° byd 30 NM blo 12,000'

270°-330° byd 30 NM blo 9,000'

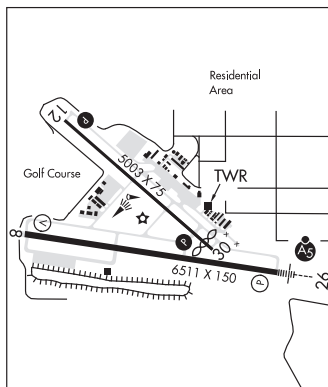
DME unusable:

060°-120° byd 20 NM blo 12,000'

121°-165° byd 30 NM blo 12,000'

270°-330° byd 30 NM blo 9,000'

ILS 109.7 I-LWS Rwy 26. Class IE. Unmonitored when ATCT clsd. Autopilot coupled approaches not authorized blo 2,500'.



SNAKE RIVER SPB (78U) 3 SW UTC-8(-7DT) N46°21.88' W117°03.72'

SEATTLE

735 NOTAM FILE BOI

WATERWAY N-S: 3000X150 (WATER)

WATERWAY S: P-line.

SEAPLANE REMARKS: Attended Apr-Oct 1500Z-dusk and Nov-Mar irregularly. P-lines cross Snake River north, south above and below ldg area. Bridge across Snake River N of ldg area. Lndg area within Lewiston-Nez Perce County arpt tfc area; ctc LWS ATCT on Twr/CTAF 119.4. Waterway N-S waterlane length and width varies. Heavy boat tfc in vicinity of spb.

No beaching gear or mooring buoys avbl. Acft may dock at marina if space is avl.

AIRPORT MANAGER: 208-799-5015

COMMUNICATIONS: CTAF 122.9

CLEARANCE DELIVERY PHONE: For CD ctc Seattle ARTCC at 253-351-3694.

LOWER LOON CREEK (See CHALLIS on page 45)