

**PRIEST RIVER MUNI** (1S6) 1 N UTC-8(-7DT) N48°11.44' W116°54.59'

GREAT FALLS

2193 NOTAM FILE BOI

**RWY 01-19:** H2983X48 (ASPH) S-12.5 LIRL

**RWY 01:** Tree.

**RWY 19:** Trees.

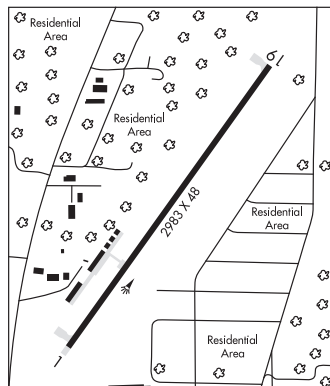
**SERVICE:** LGT ACTIVATE LIRL Rwy 01-19—CTAF.

**AIRPORT REMARKS:** Unattended. Ngt oprs recommend land Rwy 01 and dep Rwy 19. Tiedown chains removed dur winter. Irregular winter maintenance.

**AIRPORT MANAGER:** (208) 255-9179

**COMMUNICATIONS:** CTAF 122.9

**CLEARANCE DELIVERY PHONE:** For CD ctc Seattle ARTCC at 253-351-3694.



**PULLMAN/MOSCOW RGNL** (PUW)(KPUW) 3 NE UTC-8(-7DT) N46°44.50' W117°06.70'

SEATTLE

2567 B Class I, ARFF Index B NOTAM FILE PUW

H-1C, L-13B

**RWY 05-23:** H7100X150 (ASPH-GRVD) S-120, D-239, 2D-385

IAP, AD

PCN 68 F/C/X/T HIRL

**RWY 05:** MALSR. PAPI(P4L)—GA 3.0° TCH 49'. RVR-T Fence.

**RWY 23:** REIL. PAPI(P4R)—GA 3.4° TCH 58'. RVR-R Ground.

**RUNWAY DECLARED DISTANCE INFORMATION**

**RWY 05:** TORA-7100 TODA-7100 ASDA-7100 LDA-7100

**RWY 23:** TORA-7100 TODA-7100 ASDA-7100 LDA-7100

**SERVICE:** S4 FUEL 100LL, JET A LGT ACTIVATE MALSR Rwy 05; REIL Rwy 23; PAPI Rwy 05 and 23; HIRL Rwy 05-23—CTAF.

**AIRPORT REMARKS:** Attended 1600-0200Z. CLOSED to unscheduled air carrier ops with more than 30 pax seats exc PPR call arpt mgr 509-338-3223. Parachute Jumping. Non-paved areas soft. No parking between rwy and twy and within 30' of twy to the northwest. No non-paved acft ops auth. Ldg fee for all coml acft and all itinerant acft over 7,000 lbs.

**AIRPORT MANAGER:** 509-338-3223

**WEATHER DATA SOURCES:** ASOS 135.675 (509) 334-3222.

**COMMUNICATIONS:** CTAF/UNICOM 122.8

RCO 122.6 (SEATTLE RADIO)

® SEATTLE CENTER APP/DEP CON 123.95

**CLEARANCE DELIVERY PHONE:** For CD if una to ctc on FSS freq, ctc Seattle ARTCC at 253-351-3694.

**AIRSPACE:** CLASS E svc 1400-0600Z Mon-Fri, 1700-0000Z Sat, 1900-0600Z Sun; other times CLASS G.

**RADIO AIDS TO NAVIGATION:** NOTAM FILE PUW.

(VL) (L) VOR/DME 117.15 PUW Chan 118(Y) N46°40.45' W117°13.41' 029° 6.1 NM to fld. 2772/20E. DME unmonitored.

DME unusable:

040°-045° byd 35 NM blo 8,000'

065°-070° byd 30 NM blo 7,000'

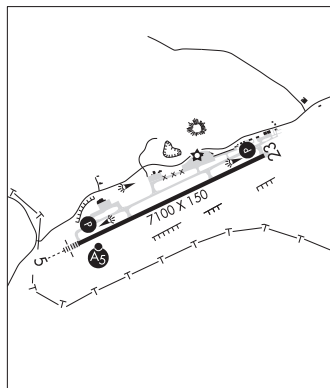
090°-095° byd 35 NM blo 7,000'

VOR unusable:

032°-100° byd 40 NM

155°-195° byd 40 NM

ILS/DME 110.35 I-PUW Chan 40(Y) Rwy 05. Class IE.



**REED RANCH** (See YELLOW PINE on page 89)