

TALLULAH

VICKSBURG TALLULAH RGNL (TVR)(KTVR) 9 E UTC-6(-5DT) N32°21.10' W91°01.66'

MEMPHIS
H-6J, L-18F
IAP

86 B TPA—1086(1000) NOTAM FILE TVR

RWY 18-36: H5002X100 (ASPH) S-60, D-75 MIRL

RWY 18: REIL. PAPI(P4L)—GA 3.0° TCH 50'. Trees.

RWY 36: SSALR. PAPI(P4L)—GA 3.0° TCH 50'. Trees.

RUNWAY DECLARED DISTANCE INFORMATION

RWY 18: TORA-5002 TODA-5002 ASDA-5002 LDA-5002

RWY 36: TORA-5002 TODA-5002 ASDA-5002 LDA-5002

SERVICE: S4 **FUEL** 100LL, JET A **LGT** MIRL **Rwy 18-36, REIL** **Rwy 18, SSALR** **Rwy 36** preset low ints dusk-dawn, to increase ints **ACTIVATE—CTAF.**

AIRPORT REMARKS: Attended 1300-0100Z†. Holidays 1500-2000Z†. For arpt mgr aft hrs call 318-366-1615. PAEW on arpt. Migratory birds invof arpt. Crop dusting activity 2 NM radius of arpt. Pilots in tfc pattern are requested to avoid over flight of Mound, LA 1/2 mile south and east of Rwy 36.

AIRPORT MANAGER: 318-574-5841

WEATHER DATA SOURCES: ASOS 118.525 (318) 574-4866.

COMMUNICATIONS: CTAF/UNICOM 123.0

MEMPHIS CENTER APP/DEP CON 132.5

CLEARANCE DELIVERY PHONE: For CD ctc Memphis ARTCC at 901-368-8453/8449.

RADIO AIDS TO NAVIGATION: NOTAM FILE GWO.

MAGNOLIA (VH) (H) VORTACW 113.2 MHz Chan 79 N32°26.04' W90°05.99' 265° 47.4 NM to fld. 407/1W.

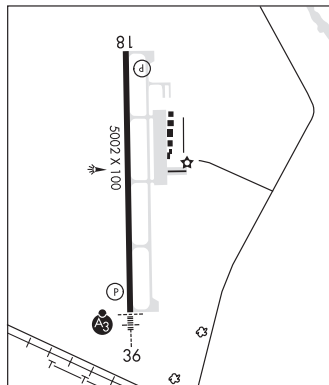
TACAN AZIMUTH unusable:

240°-275° byd 30 NM blo 2,000'

DME unsl 240-275 byd 30 NM blo 2000'

TALLULAH NDB (MHW/LOM) 344 TKH N32°14.72' W91°01.55' 357° 6.4 NM to fld. 79/2E. NOTAM FILE DRI.

ILS 109.7 I-TVR **Rwy 36.** Class ID.



THIGPEN FLD (See BAY SPRINGS on page 134)

TISHOMINGO CO (See BELMONT on page 136)