

TUPELO RGNL (TUP)(KTUP) P (ARNG) 3 W UTC-6(-5DT) N34°16.14' W88°46.19'

MEMPHIS
H-6J, L-18G
IAP, DIAP, AD

347 B Class I, ARFF Index A NOTAM FILE TUP

RWY 18-36: H7150X150 (ASPH-GRVD) S-69, D-91, 2D-168

PCN 72 F/C/W/T HIRL

RWY 18: REIL. PAPI(P4R)—GA 3.0° TCH 45'.

RWY 36: MALS.R.

SERVICE: S4 FUEL 100LL, JET A, A+, A1+ **OX3, 4 LGT** ACTIVATE MALS.R Wwy 36; REIL Rwy 18; HIRL Rwy 18-36—CTAF. PAPI Rwy 18 opr continuously.

MILITARY—FUEL A+ (avbl 1200-0400Z‡, C931-492-2160. OT C931-492-2160, \$50 fee, 30 min PN.) (NC-100LL, A1+)

AIRPORT REMARKS: Attended 1200-0400Z‡. A+ fuel svc avbl 24 hrs with credit card. Hel ops all hrs 700 ft AGL E of rwy 18/36—ctc CTAF for adzy. Acr ramp rstrd to acr ops excp with PPR Call amgr Mon-Fri 1400-2300Z‡; 662-841-6570. PPR for unsked acr ops with more than 30 pax seats call amgr 662-841-6570. Index B ARFF eqpt avbl only during sked acr ops.

MILITARY REMARKS: CAUTION Hel ops all hrs 700 ft AGL E of Rwy 18-36—ctc CTAF for adzy. **ARNG** Support fac opr Mon-Fri 1300-2200Z‡ exc hol. Ltd prk avbl. No tsnt fuel avbl. DSN 293-3438, C662-891-4438.

AIRPORT MANAGER: 662-841-6570

WEATHER DATA SOURCES: ASOS 133.525 (662) 840-8528.

COMMUNICATIONS: CTAF 118.775

TUPELO RCO 122.5 (GREENWOOD RADIO)

Ⓡ **MEMPHIS CENTER APP/DEP CON** 128.5

TOWER 118.775 (1200-0400Z‡) **GND CON** 121.825

AIRSPACE: CLASS D svc 1200-0400Z‡; other times CLASS E.

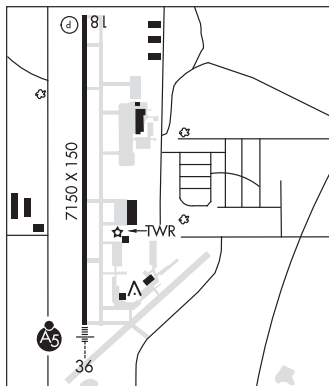
RADIO AIDS TO NAVIGATION: NOTAM FILE TUP.

(L) (L) **VORW/DME** 109.8 OTB Chan 35 N34°13.43' W88°47.84' 023° 3.0 NM to fld. 364/4E.

VOR portion unusable:
190°-220°

VERON NDB (LOMW) 420 TU N34°10.82' W88°46.12' 001° 5.3 NM to fld. 325/2W.

ILS/DME 108.5 I-TUP Chan 22 Rwy 36. Class IA. LOM VERON NDB. Unmonitored 0500-1100Z‡. LOC front course unusable beyond 025° right of course autopilot cpd apchs NA blw 1,160' MSL.



TYLERTOWN

PAUL PITTMAN MEML (T36) 3 NW UTC-6(-5DT) N31°08.74' W90°10.07'

NEW ORLEANS
L-21B, 22F

384 B NOTAM FILE GWO

RWY 18-36: H3023X60 (ASPH) S-20 MRL 0.9% up N

RWY 18: PAPI(P2L)—GA 3.0° TCH 40'. Trees.

RWY 36: PAPI(P2L)—GA 3.0° TCH 41'.

SERVICE: FUEL 100LL **LGT** PAPIs OTS indefly.

AIRPORT REMARKS: Unattended. 10LL avbl 24 hrs with credit card. Pilots must provide their own tiedown ropes. Pub fone 601-876-9327.

AIRPORT MANAGER: 601-814-9021

COMMUNICATIONS: CTAF/UNICOM 122.8

CLEARANCE DELIVERY PHONE: For CD ctc Houston ARTCC at 281-230-5622.

RADIO AIDS TO NAVIGATION: NOTAM FILE MCB.

MC COMB (H) (H) VORTAC 116.7 MCB Chan 114 N31°18.27' W90°15.49' 151° 10.6 NM to fld. 440/3E.

UNIVERSITY—OXFORD (See OXFORD on page 166)

VERON N34°10.82' W88°46.12' NOTAM FILE TUP.

MEMPHIS
L-18G

NDB (LOMW) 420 TU 001° 5.3 NM to Tupelo Rgnl. 325/2W.