

GRAFORD

POSSUM KINGDOM (F35) 12 SW UTC-6(-5DT) N32°55.40' W98°26.21'

DALLAS-FT WORTH

1008 B NOTAM FILE FTW

L-17B

RWY 02-20: H3500X60 (ASPH) S-24 MIRL

IAP

RWY 02: PAPI(P2L)—GA 3.5° TCH 33'. Trees.

RWY 20: PAPI(P2L)—GA 3.5° TCH 30'. Trees.

SERVICE: LGT ACTVT MIRL Rwy 02-20—CTAF.

AIRPORT REMARKS: Unattended. Wildlife invof arpt. NOTE: See Special Notices—Aerobatic Practice Area.

AIRPORT MANAGER: 940-779-2321

COMMUNICATIONS: CTAF 122.9

® **FORT WORTH CENTER APP/DEP CON** 127.0

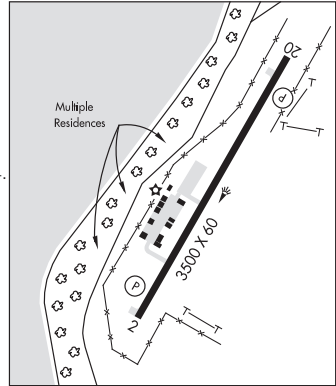
CLEARANCE DELIVERY PHONE: For CD ctc Fort Worth ARTCC at 817-858-7584.

RADIO AIDS TO NAVIGATION: NOTAM FILE FTW.

MILLSAP (VH) (H) VORTACW 117.7 MQP Chan 124 N32°43.57' W97°59.85' 289° 25.2 NM to fld. 900/9E.

VOR unusable:

- 004°-009° byd 40 NM
- 010°-054° byd 40 NM blo 3,800'
- 010°-054° byd 46 NM blo 5,000'
- 010°-054° byd 56 NM
- 055°-066° byd 40 NM blo 3,800'
- 055°-066° byd 50 NM
- 230°-247° byd 40 NM
- 248°-258° byd 40 NM blo 3,700'
- 248°-258° byd 53 NM
- 259°-270° byd 40 NM blo 6,000'
- 259°-270° byd 63 NM
- 271°-285° byd 40 NM
- 312°-316° byd 40 NM
- 325°-340° byd 40 NM blo 3,000'
- 325°-340° byd 46 NM blo 5,000'
- 325°-340° byd 66 NM
- 353°-003° byd 40 NM blo 18,000'



GRAHAM MUNI (RPH)(KRPH) 2 E UTC-6(-5DT) N33°06.64' W98°33.29'

DALLAS-FT WORTH

1123 B NOTAM FILE RPH

H-6H, L-17B

RWY 03-21: H5000X75 (ASPH) S-12 MIRL

IAP

RWY 03: PAPI(P2L)—GA 3.0° TCH 40'. Trees.

RWY 21: PAPI(P2R)—GA 3.0° TCH 40'. Trees.

RWY 18-36: H3317X50 (ASPH) S-8 0.4% up S

RWY 18: Thld dspcld 639'. Road.

RWY 36: Road.

SERVICE: S4 FUEL 100LL, JET A, A+ LGT MIRL Rwy 03-21 SS-SR preset to low, to incr instst ACTVT—CTAF.

AIRPORT REMARKS: Attended Mon-Fri 1400-2300Z. Wildlife on and invof arpt. Call prior to arrival for hangar availability at 940-549-6150.

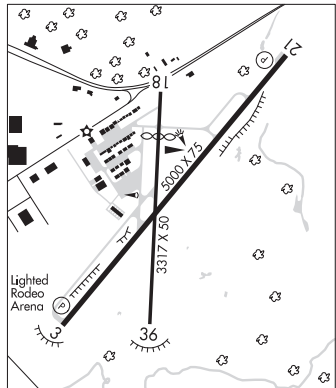
AIRPORT MANAGER: 940-549-6150

WEATHER DATA SOURCES: AWOS-3P 118.025 (940) 521-0685.

COMMUNICATIONS: CTAF/UNICOM 122.975

® **FORT WORTH CENTER APP/DEP CON** 127.0

CONTINUED ON NEXT PAGE



CONTINUED FROM PRECEDING PAGE

CLEARANCE DELIVERY PHONE: For CD ctc Fort Worth ARTCC at 817-858-7584.

RADIO AIDS TO NAVIGATION: NOTAM FILE FTW.

MILLSAP (VH) (H) VORTACW 117.7 MQP Chan 124 N32°43.57' W97°59.85' 300° 36.4 NM to fld. 900/9E.

VOR unusable:

004°-009° byd 40 NM
 010°-054° byd 40 NM blo 3,800'
 010°-054° byd 46 NM blo 5,000'
 010°-054° byd 56 NM
 055°-066° byd 40 NM blo 3,800'
 055°-066° byd 50 NM
 230°-247° byd 40 NM
 248°-258° byd 40 NM blo 3,700'
 248°-258° byd 53 NM
 259°-270° byd 40 NM blo 6,000'
 259°-270° byd 63 NM
 271°-285° byd 40 NM
 312°-316° byd 40 NM
 325°-340° byd 40 NM blo 3,000'
 325°-340° byd 46 NM blo 5,000'
 325°-340° byd 66 NM
 353°-003° byd 40 NM blo 18,000'

GRANBURY RGNL (GDJ)(KGDJ) 2 W UTC-6(-5DT) N32°26.58' W97°49.28'

DALLAS-FT WORTH

835 B NOTAM FILE GDJ

L-17C, A

RWY 01-19: H5201X75 (CONC) MIRL 1.0% up S

IAP

RWY 01: PAPI(P2L)—GA 3.0° TCH 40'.

RWY 19: PAPI(P2L)—GA 3.0° TCH 40'. Rgt tfc.

SERVICE: S4 FUEL 100LL, JET A LGT MIRL Rwy 01-19 preset low
 intst; to incr intst ACTVT—CTAF.

AIRPORT REMARKS: Attended 1300-0100Z \ddagger . 100LL 24 hr self serve. For
 Jet A aft hrs call 817-579-8533 durg ofc hrs. Overnight tie-down fee
 waived with fuel purchase.

AIRPORT MANAGER: 817-579-8533

WEATHER DATA SOURCES: AWOS-3T 118.925 (817) 573-7514.

COMMUNICATIONS: CTAF/UNICOM 123.0

® FORT WORTH CENTER APP/DEP CON 127.15

CLEARANCE DELIVERY PHONE: For CD ctc Fort Worth ARTCC at
 817-858-7584.

RADIO AIDS TO NAVIGATION: NOTAM FILE FTW.

GLEN ROSE (L) TACAN Chan 97 JEN (115.0) N32°09.58'
 W97°52.66' 004° 17.2 NM to fld. 1300/6E.

